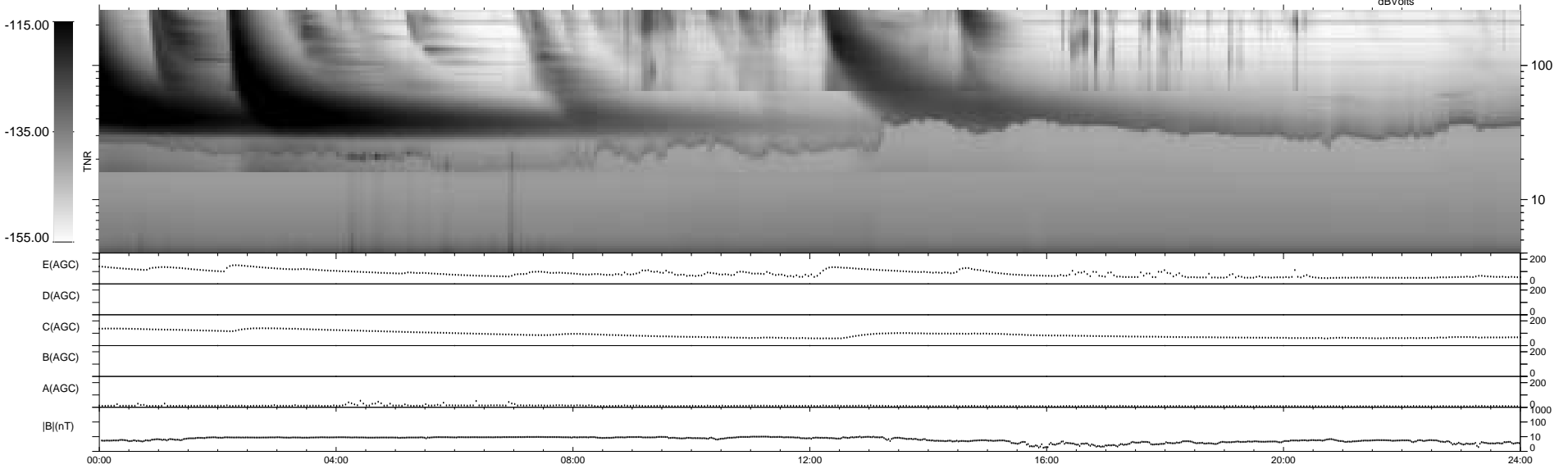
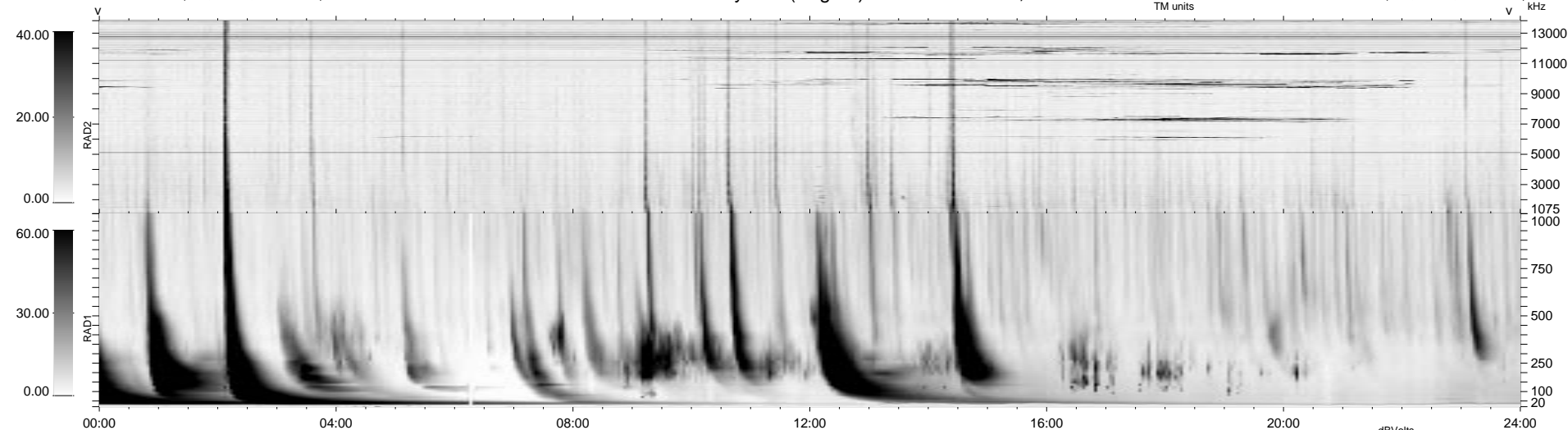


0 bad + 2 good MF/ZMF projected (100%) - 0 missing MFs
 Avg interval = 180 secs
 Re = 246.49 (6.95, 245.84, -16.49 GSE)

1.7d VMS-SunOS LZ version = v02
 DAILY Thu Sep 11, 2008
 Re = 248.02 (6.40, 247.37, -16.71 GSE)

WIND/WAVES Summary Plot (Page 1) for 28-DEC-2000, DOY = 363



RAD2
 Antenna Ey
 Mode LIN(1)
 SUM/SEP SEP
 Toggle OFF

RAD1
 Antenna Ex
 Mode LIS(2,3)
 SUM/SEP SUM
 Toggle OFF

TNR
 Antenna ExEy
 Mode A-32
 Sweep ACE