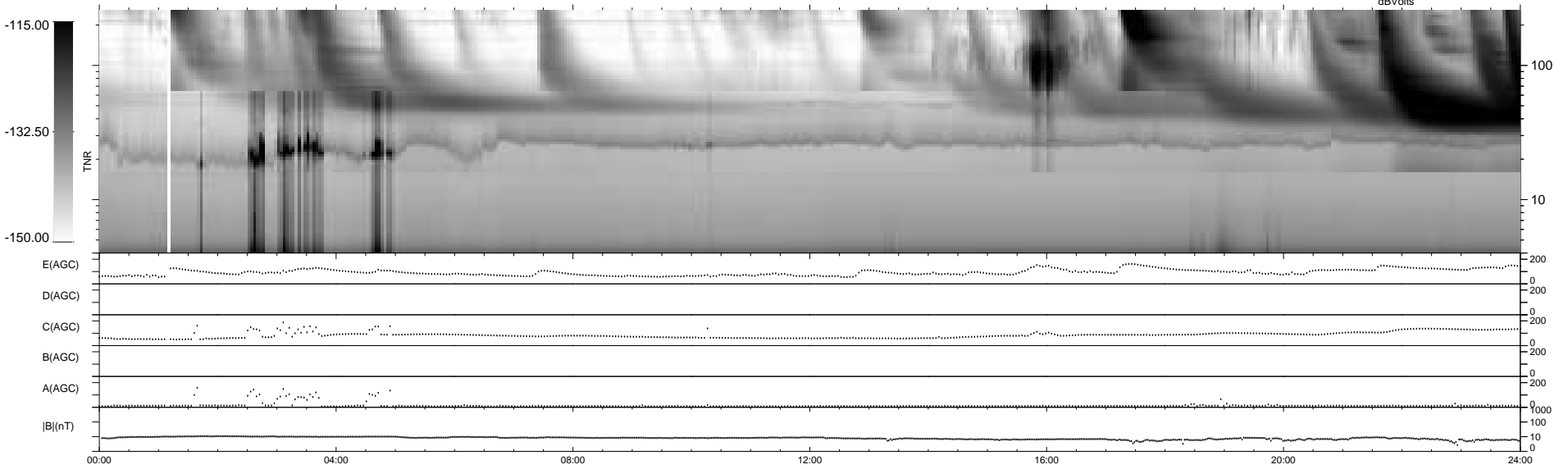
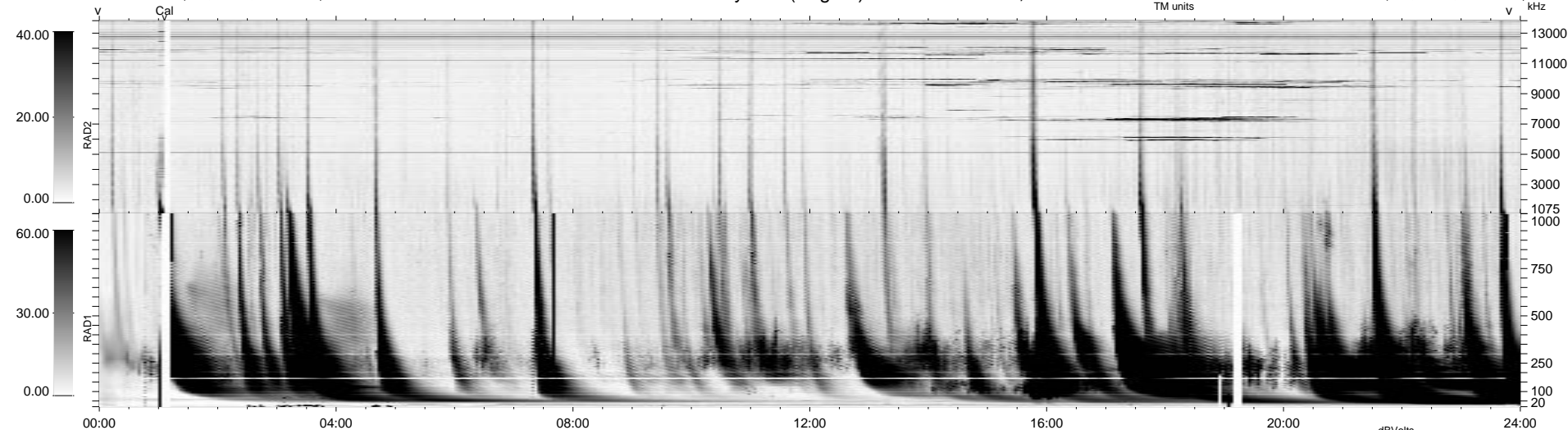


0 bad + 2 good MF/ZMF projected (100%) - 0 missing MFs  
 Avg interval = 180 secs  
 Re = 244.76 (7.52, 244.11, -16.26 GSE)

1.7d VMS-SunOS LZ version = v02  
 DAILY Thu Sep 11, 2008  
 Re = 246.47 (6.95, 245.82, -16.49 GSE)

WIND/WAVES Summary Plot (Page 1) for 27-DEC-2000, DOY = 362



```

RAD2
Antenna Ey .....
Mode LIN(1) .....
SUM/SEP SEP .....
Toggle OFF .....

RAD1
Antenna Ex .....
Mode LIS(2,8) .....
SUM/SEP SUM .....
Toggle OFF .....

TNR
Antenna ExEy .....
Mode A-32 .....
Sweep ACE .....
  
```