

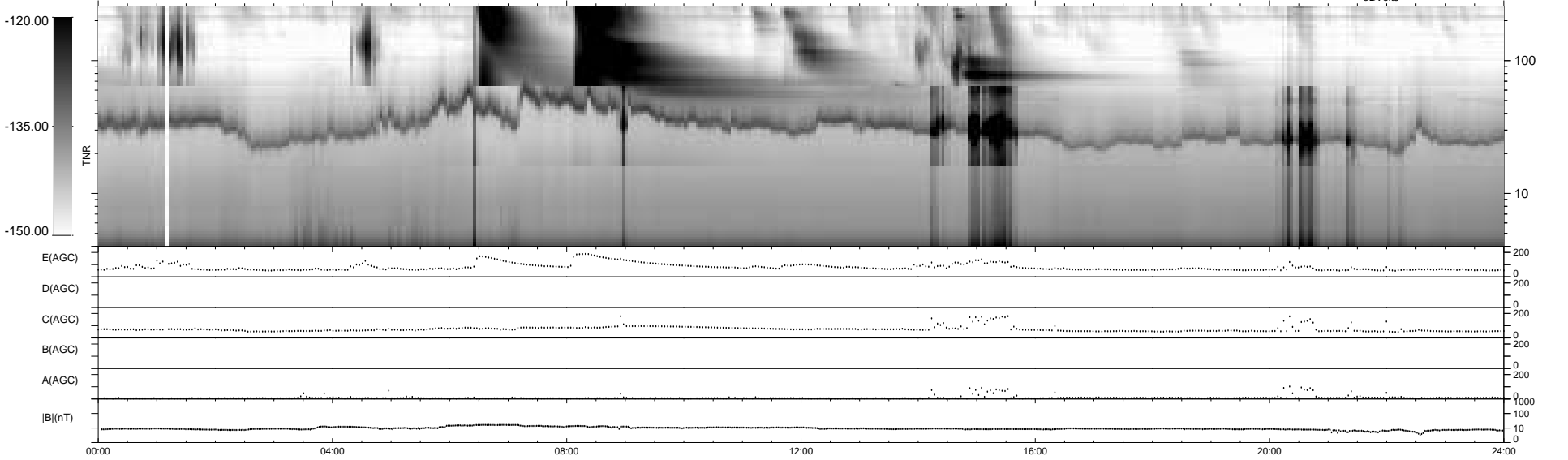
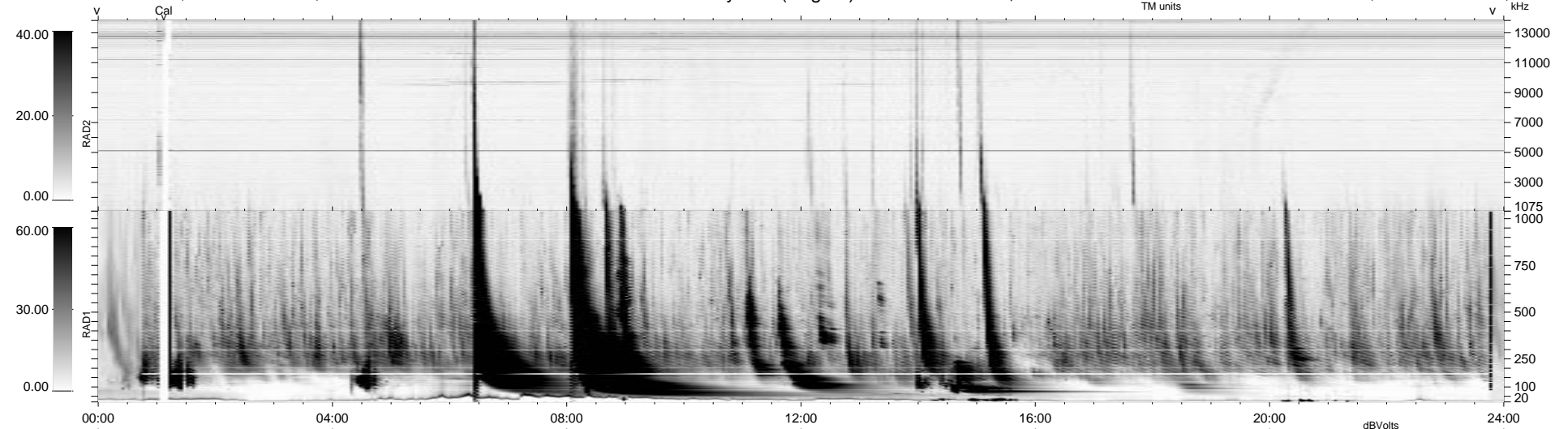
0 bad + 2 good MF/ZMF projected (100%) - 0 missing MFs
 Avg interval = 180 secs
 Re = 136.69 (66.00, 119.67, -2.57 GSE)

1.7d VMS-SunOS

LZ version = v01

WIND/WAVES Summary Plot (Page 1) for 29-NOV-2000, DOY = 334

DAILY Thu Sep 11, 2008
 Re = 142.08 (62.09, 127.76, -3.32 GSE)



```

RAD2
Antenna Ey .....
Mode LIN(1) .....
SUM/SEP SEP .....
Toggle OFF .....

RAD1
Antenna Ex .....
Mode LIS(2,3) ..... LIS(2,8)
SUM/SEP SUM ..... SUM
Toggle OFF .....

TNR
Antenna ExEy .....
Mode A-32 .....
Sweep ACE .....
  
```