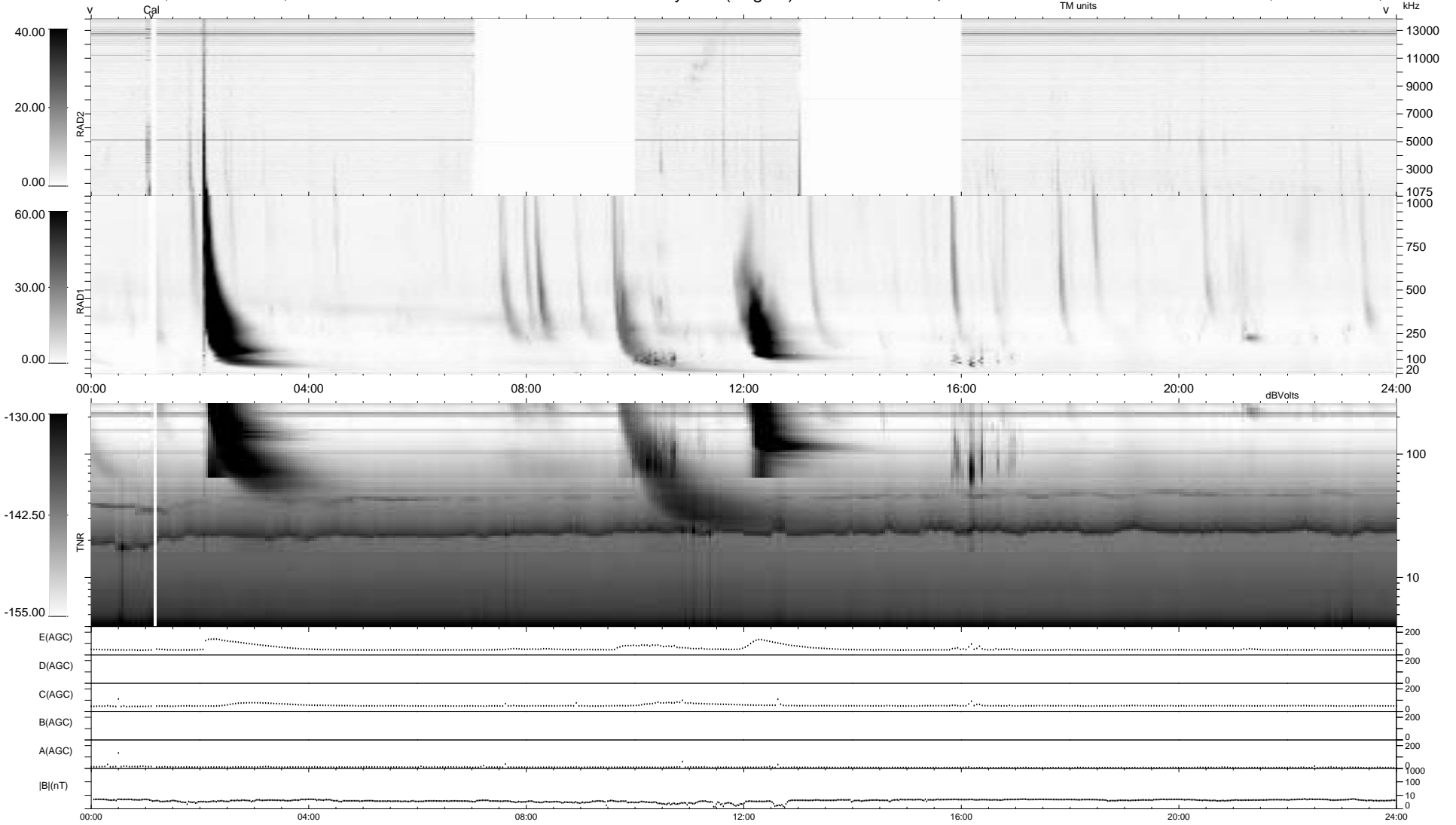


0 bad + 2 good MF/ZMF projected (100%) - 0 missing MFs
 Avg interval = 180 secs
 Re = 98.10 (97.31, -11.08, 5.73 GSE)

1.7d VMS-SunOS LZ version = v01

WIND/WAVES Summary Plot (Page 1) for 17-NOV-2000, DOY = 322

DAILY Thu Sep 11, 2008
 Re = 97.55 (97.40, 1.21, 5.26 GSE)



```

RAD2
Antenna Ey .....
Mode LIN(1) ..... FIX(78) ..... LIN(1) ..... FIX(140) ..... LIN(1) .....
SUM/SEP SEP .....
Toggle OFF .....

RAD1
Antenna Ex .....
Mode LIS(2,3) .....
SUM/SEP SUM .....
Toggle OFF .....

TNR
Antenna ExEy .....
Mode A-32 .....
Sweep ACE .....
  
```