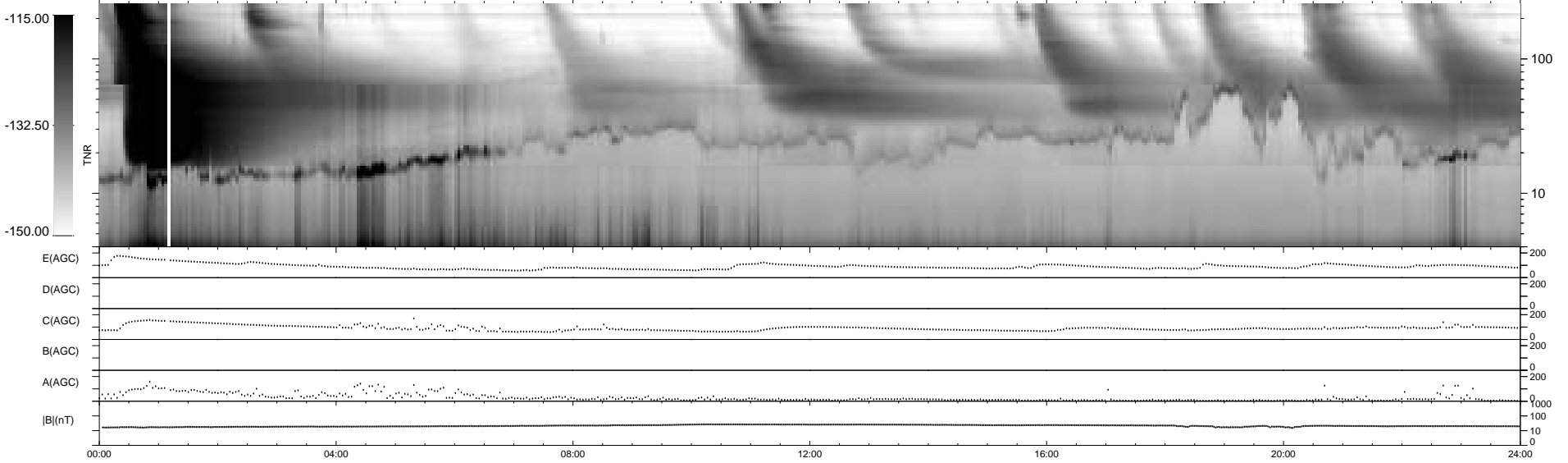
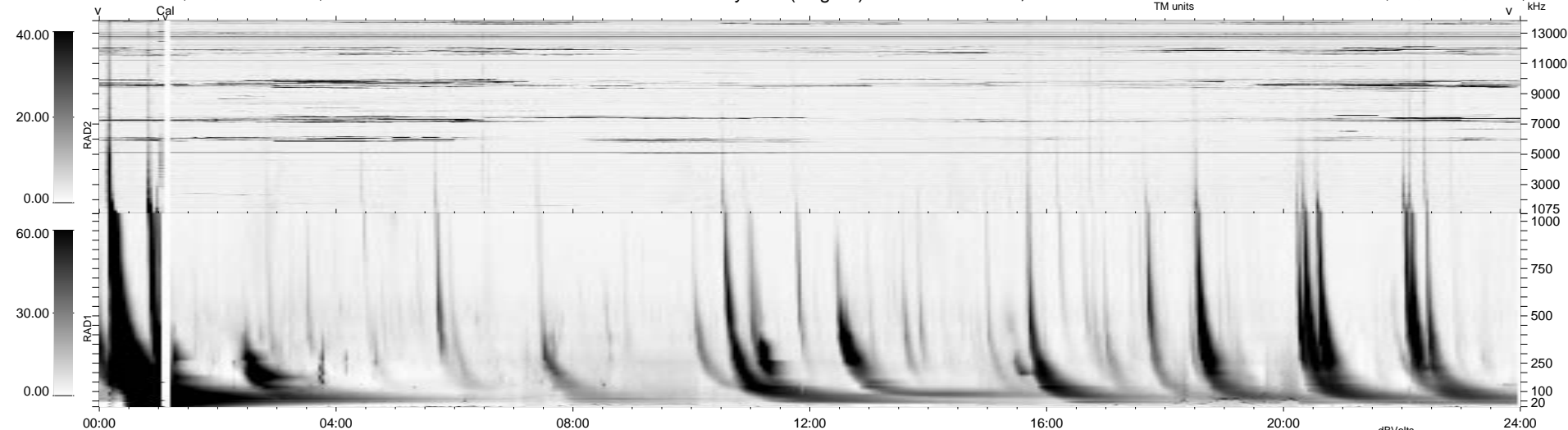


0 bad + 2 good MF/ZMF projected (100%) - 0 missing MFs  
 Avg interval = 180 secs  
 Re = -137.30 (73.59, -115.71, 6.93 GSE)

1.7d VMS-SunOS LZ version = v01  
 DAILY Thu Sep 11, 2008  
 Re = 131.98 (76.63, -107.23, 7.03 GSE)

WIND/WAVES Summary Plot (Page 1) for 07-NOV-2000, DOY = 312



```

RAD2
Antenna Ey .....
Mode LIN(1) .....
SUM/SEP SEP .....
Toggle OFF .....

RAD1
Antenna Ex .....
Mode LIS(2,3) .....
SUM/SEP SUM .....
Toggle OFF .....

TNR
Antenna ExEy .....
Mode A-32 .....
Sweep ACE .....
  
```