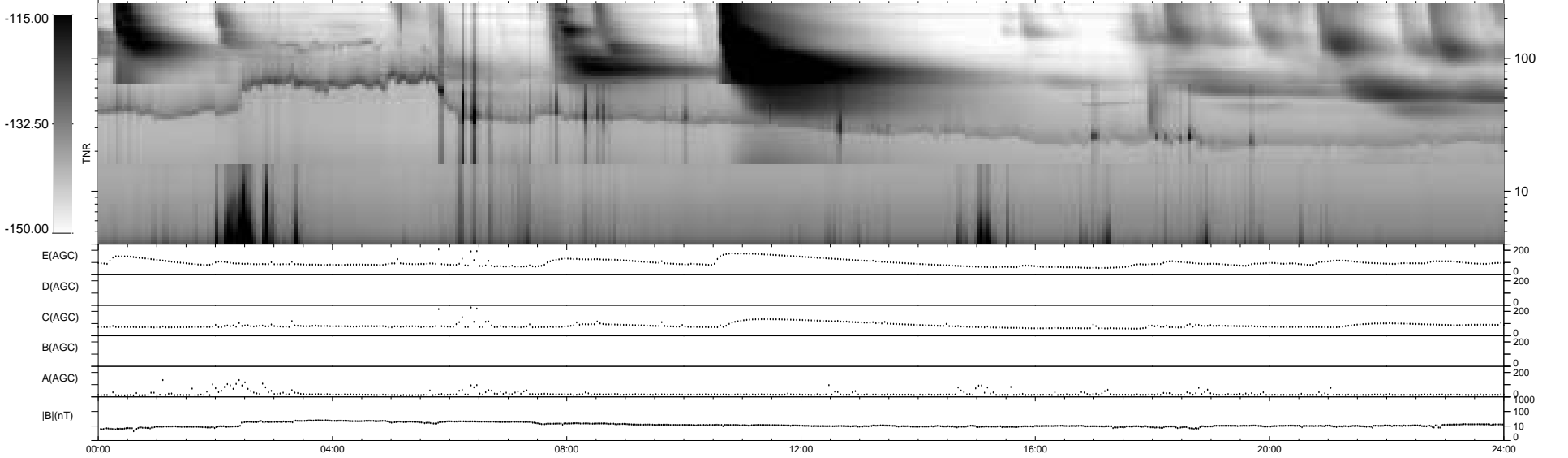
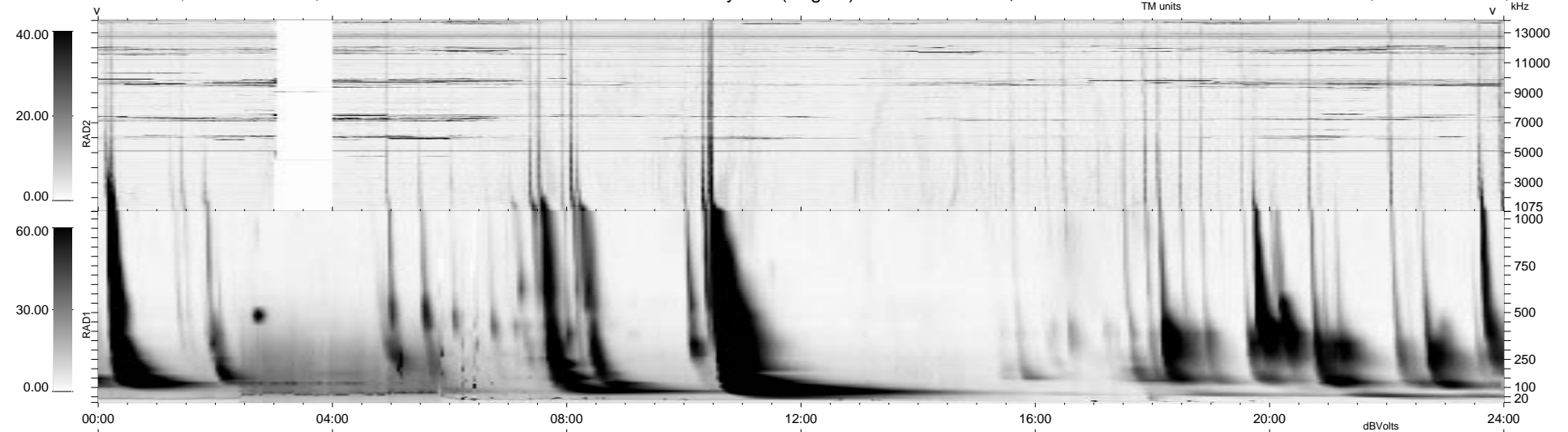


0 bad + 2 good MF/ZMF projected (100%) - 0 missing MFs
 Avg interval = 180 secs
 Re = -153.65 (64.79, -139.16, 6.47 GSE)

1.7d VMS-SunOS LZ version = v01
 DAILY Thu Sep 11, 2008
 Re = 148.23 (67.62, -131.74, 6.65 GSE)

WIND/WAVES Summary Plot (Page 1) for 04-NOV-2000, DOY = 309



RAD2
 Antenna Ey
 Mode LIN(1) LIS(8,11) LIN(1)
 SUM/SEP SEP
 Toggle OFF

RAD1
 Antenna Ex
 Mode LIS(2,3)
 SUM/SEP SUM
 Toggle OFF

TNR
 Antenna ExEy
 Mode A-32
 Sweep ACE