

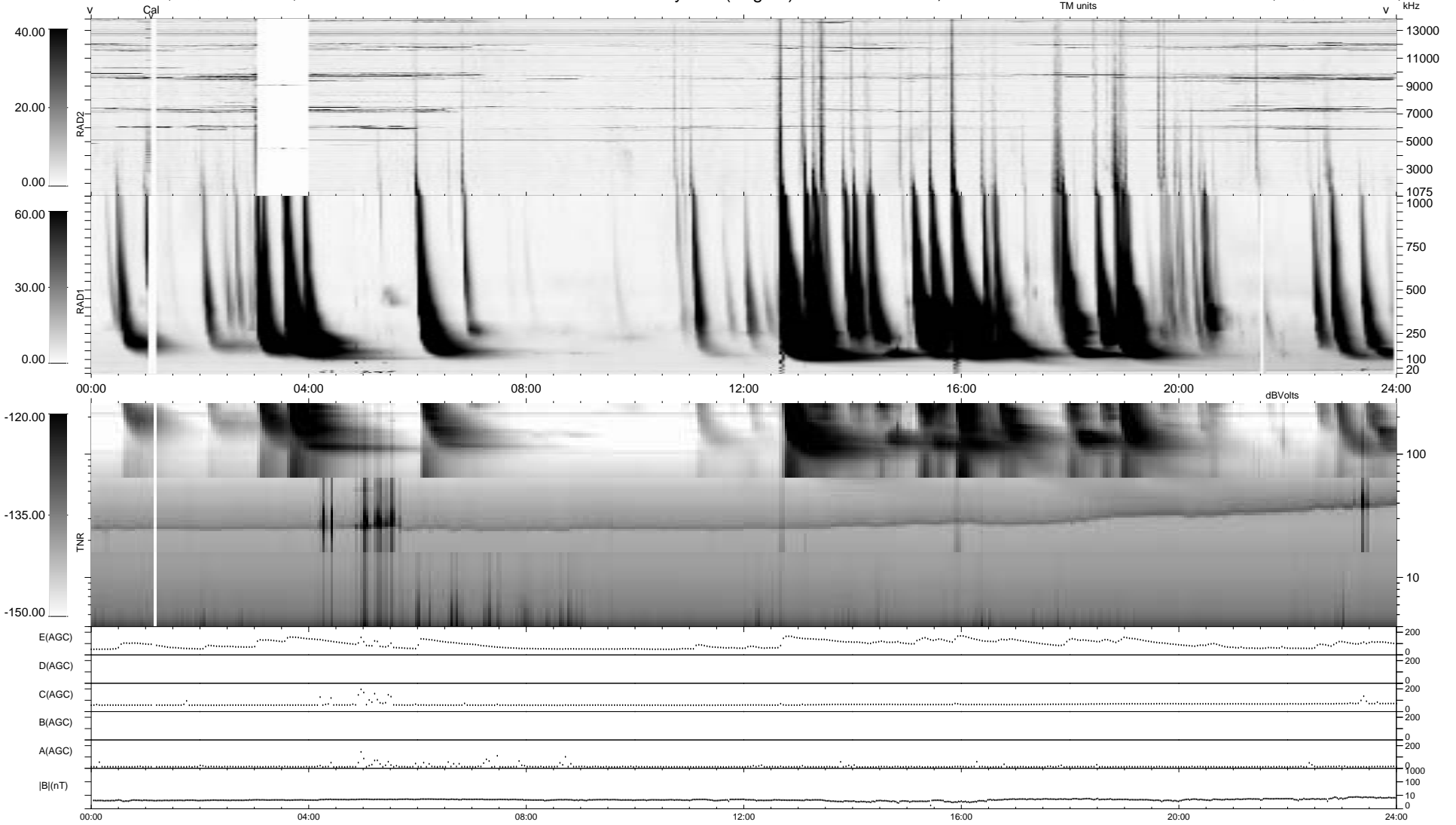
0 bad + 2 good MF/ZMF projected (100%) - 0 missing MFs
 Avg interval = 180 secs
 Re = 159.07 (62.05, -146.34, 6.27 GSE)

1.7d VMS-SunOS

LZ version = v01

WIND/WAVES Summary Plot (Page 1) for 03-NOV-2000, DOY = 308

DAILY Thu Sep 11, 2008
 Re = 153.68 (64.77, -139.22, 6.47 GSE)



RAD2
 Antenna Ey LIS(8,11) LIN(1)
 Mode LIN(1)
 SUM/SEP SEP
 Toggle OFF
 RAD1
 Antenna Ex
 Mode LIS(2,3)
 SUM/SEP SUM
 Toggle OFF
 TNR
 Antenna ExEy
 Mode A-32
 Sweep ACE