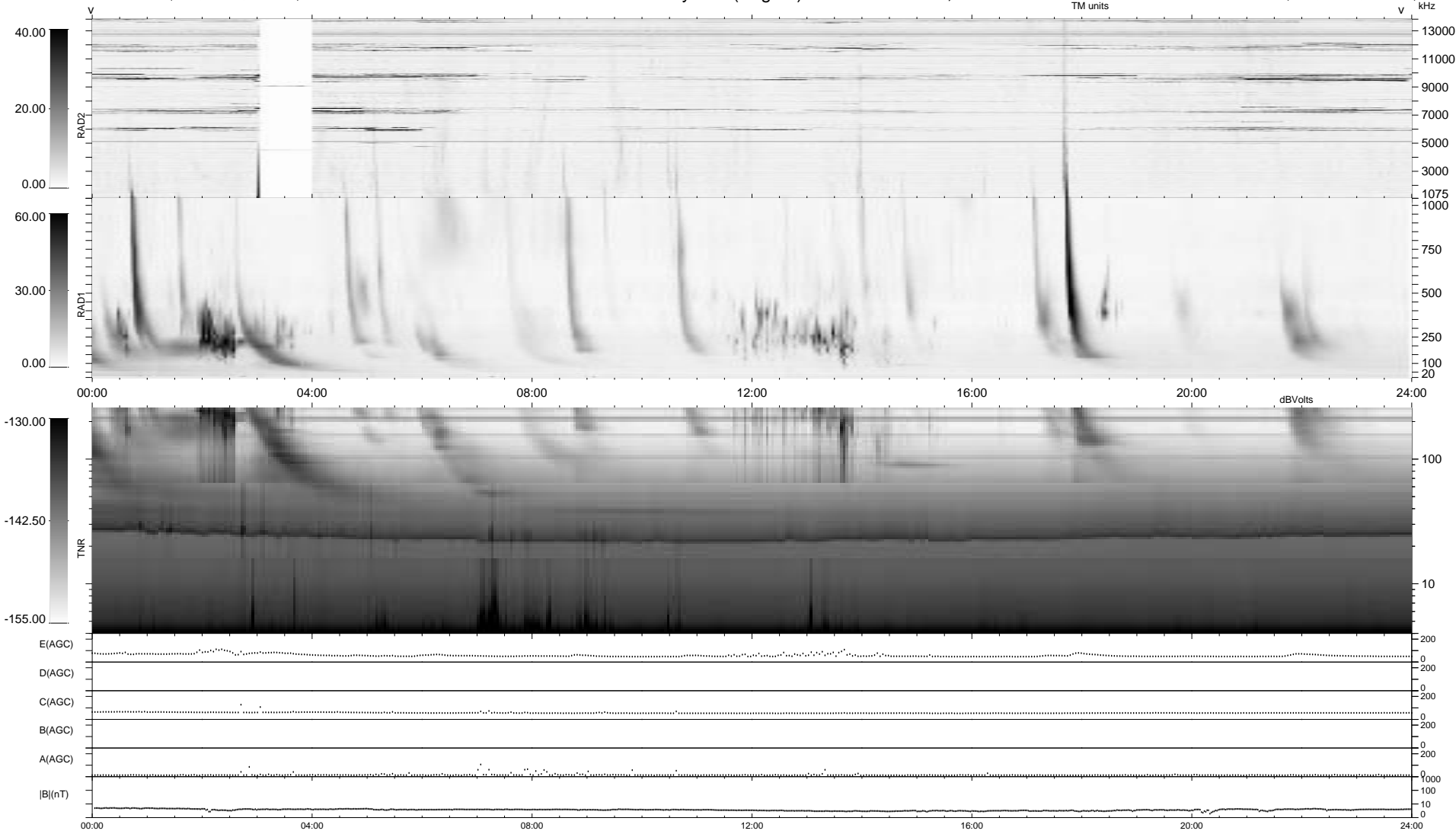


0 bad + 2 good MF/ZMF projected (100%) - 0 missing MFs
 Avg interval = 180 secs
 Re = 164.45 (59.43, -153.22, 6.05 GSE)

1.7d VMS-SunOS LZ version = v01
 DAILY Thu Sep 11, 2008
 Re = 159.11 (62.04, -146.38, 6.27 GSE)

WIND/WAVES Summary Plot (Page 1) for 02-NOV-2000, DOY = 307



```

RAD2
Antenna Ey ..... LIS(8,11) ..... LIN(1) .....
Mode LIN(1) ..... LIS(8,11) ..... LIN(1) .....
SUM/SEP SEP .....
Toggle OFF .....

RAD1
Antenna Ex .....
Mode LIS(2,3) .....
SUM/SEP SUM .....
Toggle OFF .....

TNR
Antenna ExEy .....
Mode A-32 .....
Sweep ACE .....
  
```