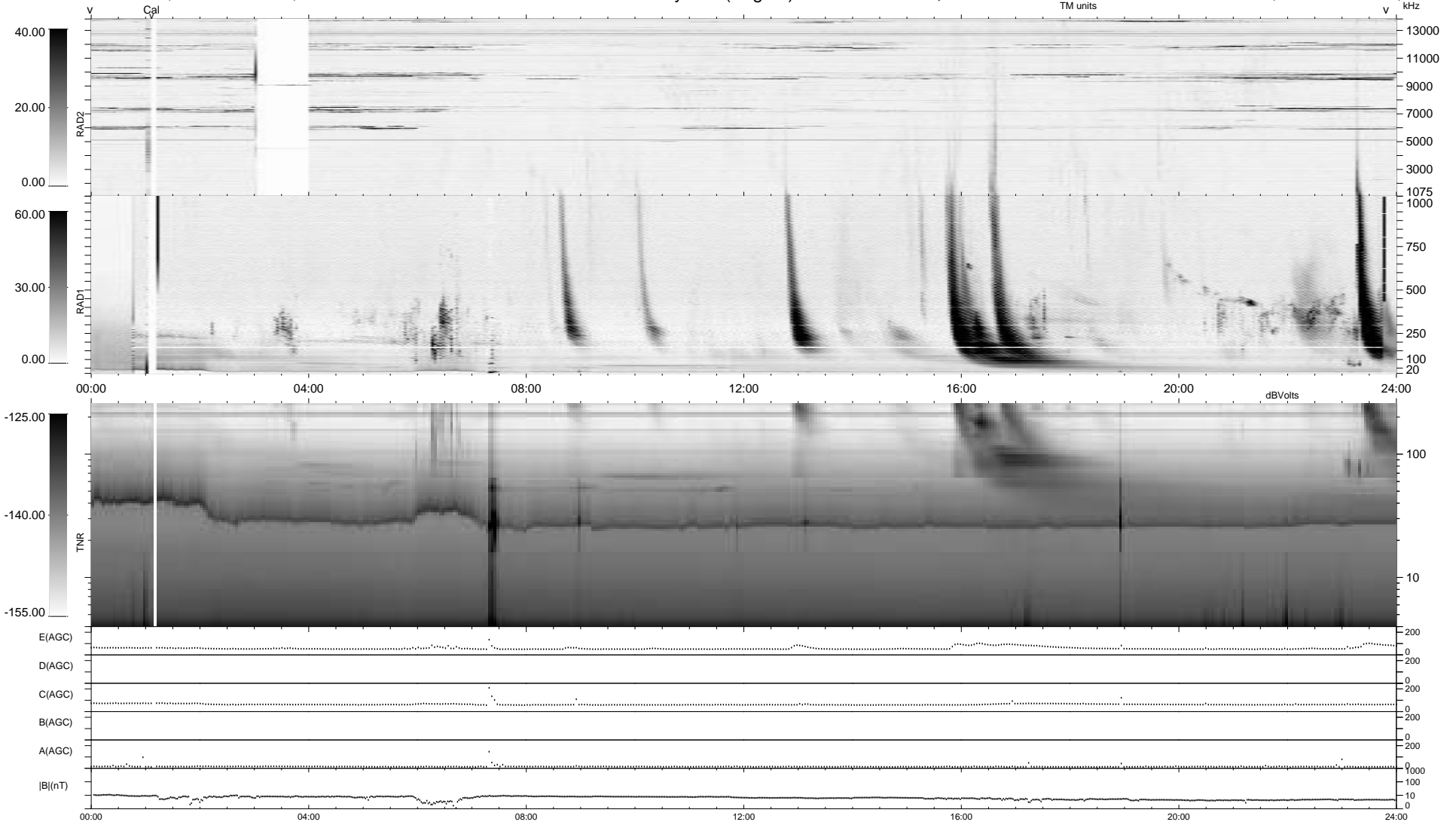


0 bad + 2 good MF/ZMF projected (100%) - 0 missing MFs
 Avg interval = 180 secs
 Re = 169.75 (56.92, -159.82, 5.81 GSE)

1.7d VMS-SunOS LZ version = v01
 DAILY Thu Sep 11, 2008
 Re = 164.49 (59.41, -153.26, 6.05 GSE)

WIND/WAVES Summary Plot (Page 1) for 01-NOV-2000, DOY = 306



RAD2
 Antenna Ey LIS(8,11) LIN(1)
 Mode LIN(1) LIS(8,11) LIN(1)
 SUM/SEP SEP
 Toggle OFF
 RAD1
 Antenna Ex LIS(2,8) LIS(2,8)
 Mode LIS(2,8) LIS(2,8) LIS(2,8)
 SUM/SEP SUM SEP SUM
 Toggle OFF
 TNR
 Antenna ExEy
 Mode A-32
 Sweep ACE