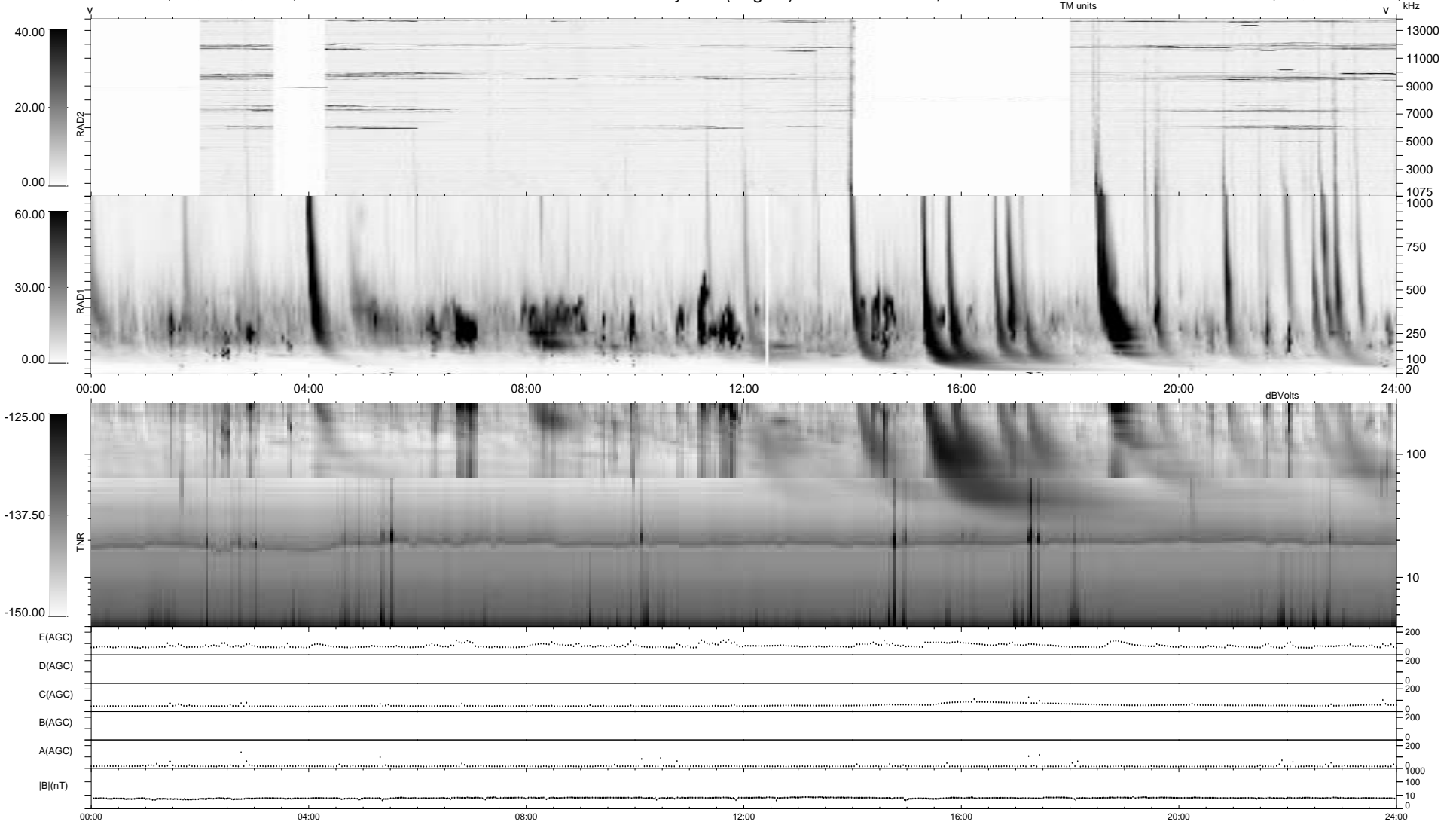


0 bad + 2 good MF/ZMF projected (100%) - 0 missing MFs
 Avg interval = 180 secs
 Re = -232.05 (33.22, -229.65, 0.86 GSE)

1.7d VMS-SunOS LZ version = v01
 DAILY Thu Sep 11, 2008
 Re = 229.21 (33.99, -226.67, 1.23 GSE)

WIND/WAVES Summary Plot (Page 1) for 17-OCT-2000, DOY = 291



```

RAD2
Antenna Ey ..... LIN(1) ..... FX(157) ..... LIN(1) .....
Mode FIX(157) ..... LIN(1) ..... FX(140) ..... LIN(1) .....
SUM/SEP SEP .....
Toggle OFF .....

RAD1
Antenna Ex .....
Mode LIS(2/3) .....
SUM/SEP SUM .....
Toggle OFF .....

TNR
Antenna ExEy .....
Mode A-32 .....
Sweep ACE .....
  
```