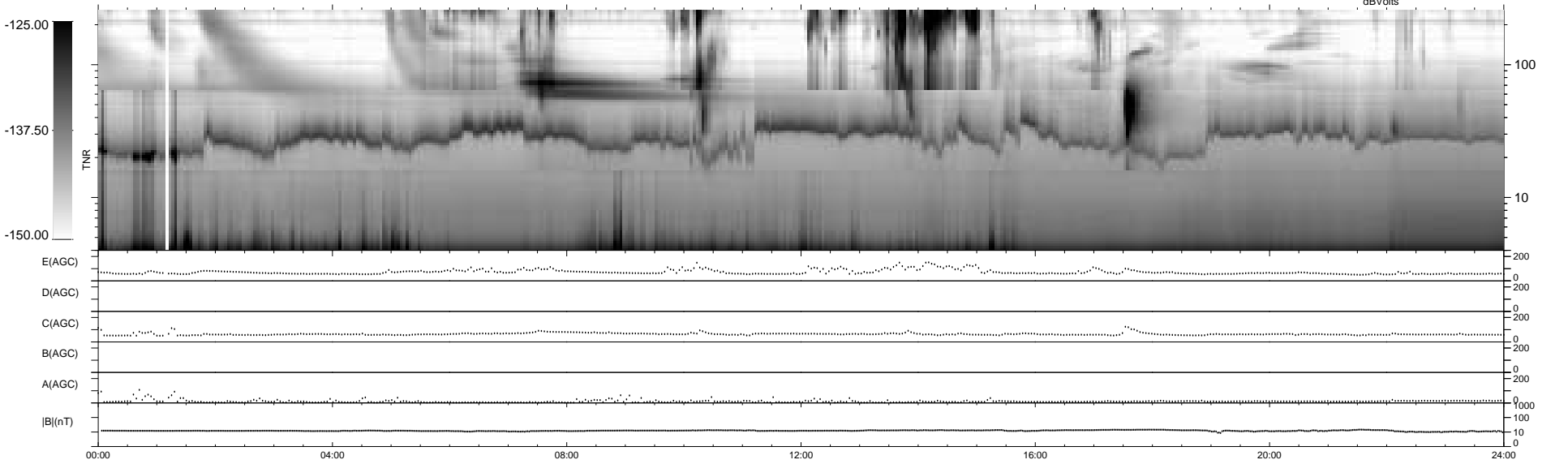
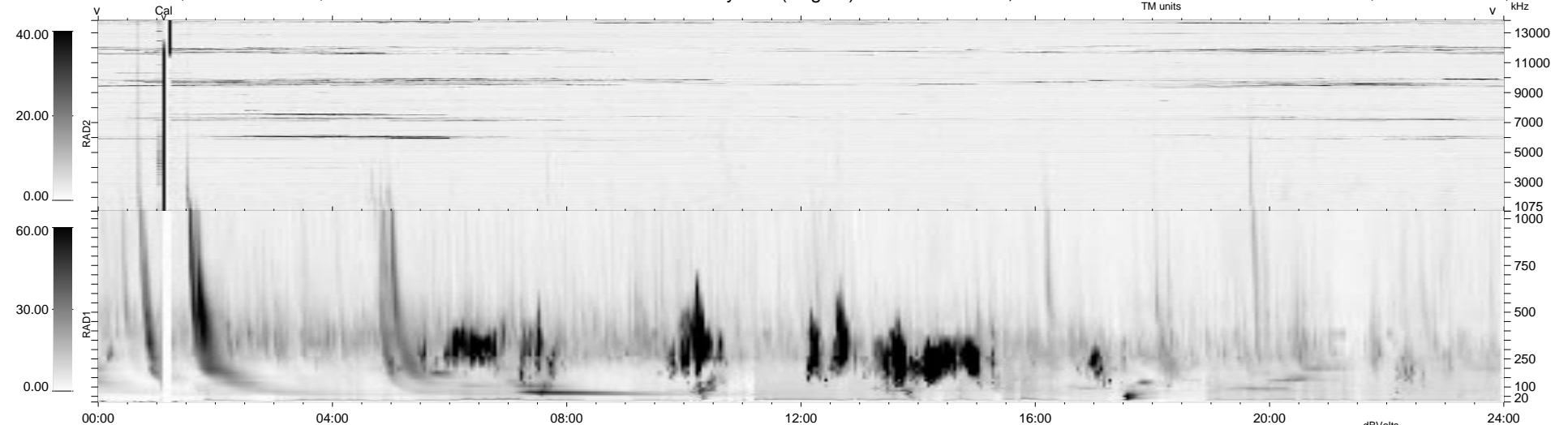


0 bad + 2 good MF/ZMF projected (100%) - 0 missing MFs  
 Avg interval = 180 secs  
 Re = -239.48 (31.63, -237.38, -0.24 GSE)

1.7d VMS-SunOS LZ version = v01  
 DAILY Thu Sep 11, 2008  
 Re = 237.20 (32.04, -235.03, 0.12 GSE)

WIND/WAVES Summary Plot (Page 1) for 14-OCT-2000, DOY = 288



E(AGC) 0 200  
 D(AGC) 0 200  
 C(AGC) 0 200  
 B(AGC) 0 200  
 A(AGC) 0 200  
 |B|(nT) 0 1000  
 0 100  
 0 10

RAD2  
 Antenna Ey  
 Mode LIN(1)  
 SUM/SEP SEP  
 Toggle OFF

RAD1  
 Antenna Ex  
 Mode LIS(2,3)  
 SUM/SEP SUM  
 Toggle OFF

TNR  
 Antenna ExEy  
 Mode A-32  
 Sweep ACE