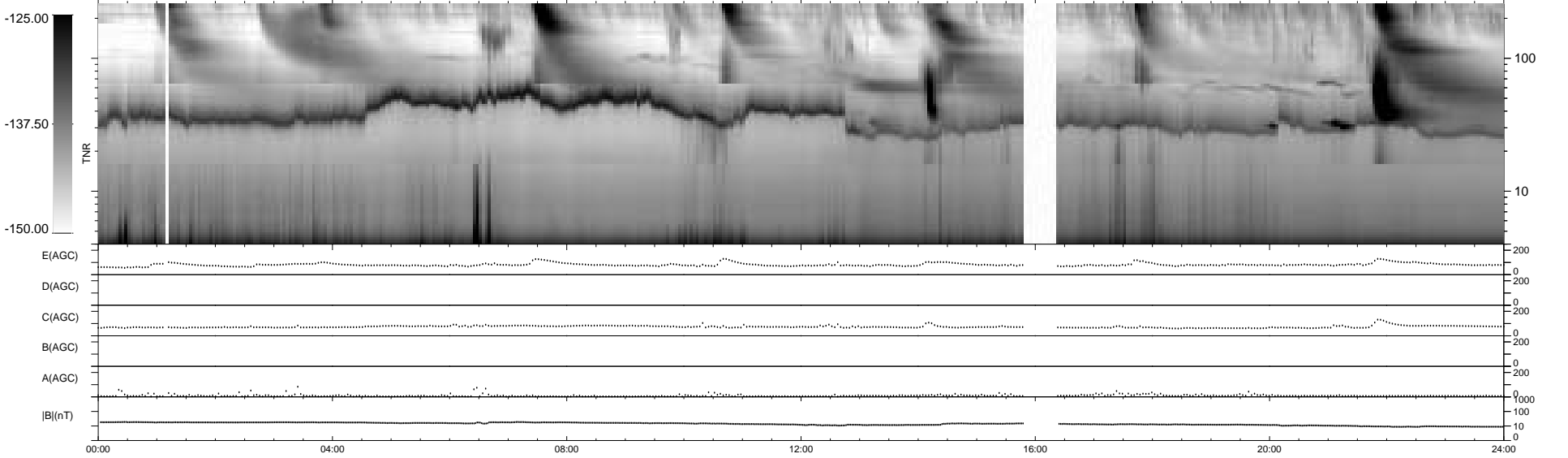
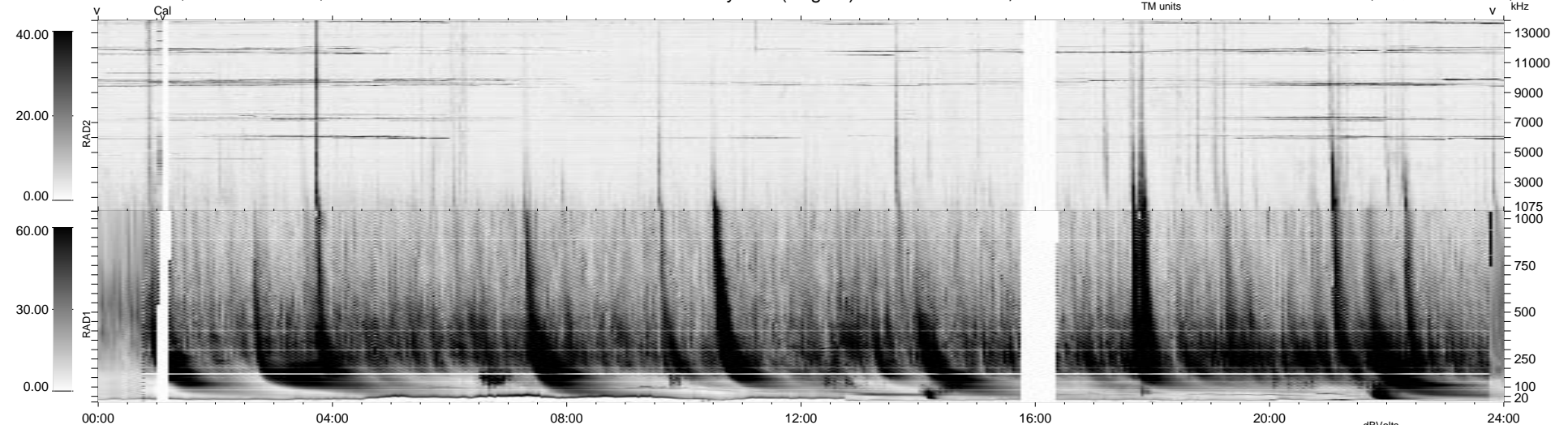


0 bad + 2 good MF/ZMF projected (100%) - 0 missing MFs  
 Avg interval = 180 secs  
 Re = 253.57 (32.46, -251.46, -3.67 GSE)

1.7d VMS-SunOS LZ version = v01  
 DAILY Thu Sep 11, 2008  
 Re = 252.85 (32.13, -250.78, -3.35 GSE)

WIND/WAVES Summary Plot (Page 1) for 04-OCT-2000, DOY = 278



RAD2  
 Antenna Ey .....  
 Mode LIN(1) .....  
 SUM/SEP SEP .....  
 Toggle OFF .....  
 RAD1  
 Antenna Ex .....  
 Mode LIS(2,8) .....  
 SUM/SEP SUM .....  
 Toggle OFF .....  
 TNR  
 Antenna ExEy .....  
 Mode A-32 .....  
 Sweep ACE .....  
 LIS(2,8) SUM