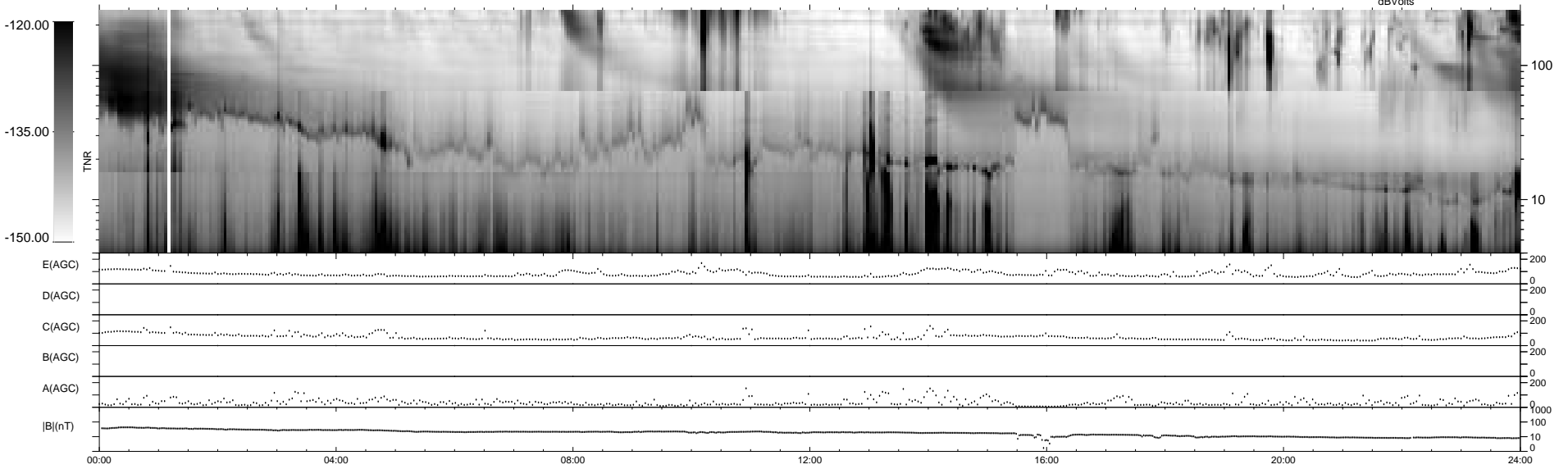
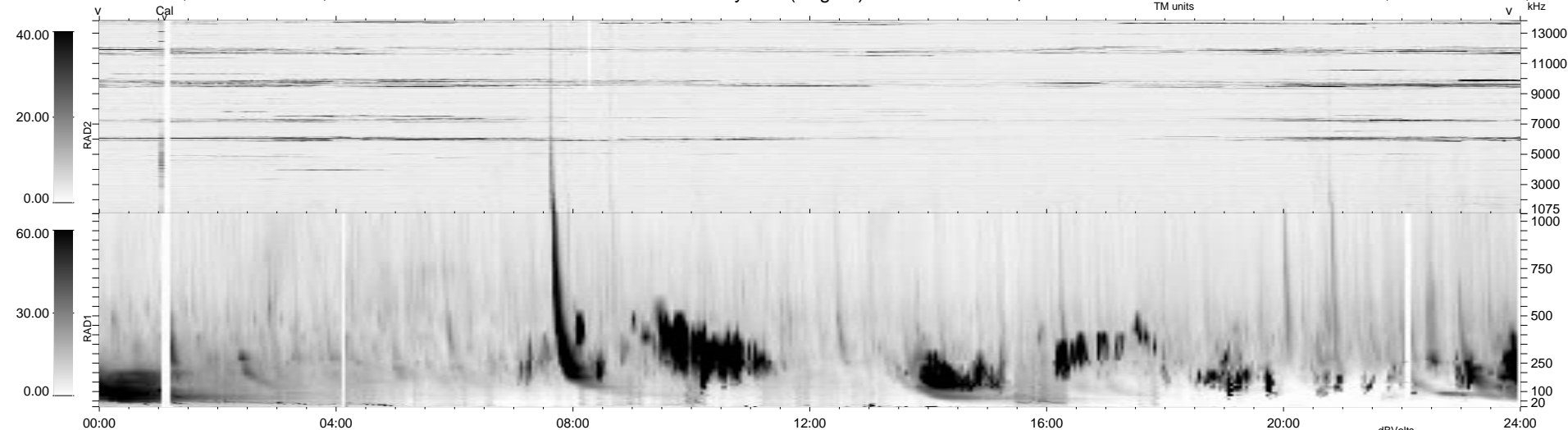


0 bad + 2 good MF/ZMF projected (100%) - 0 missing MFs  
 Avg interval = 180 secs  
 Re = -240.48 (33.41, -238.00, -8.49 GSE)

1.7d VMS-SunOS LZ version = v02  
 DAILY Thu Sep 11, 2008  
 Re = 242.89 (33.79, -240.39, -8.24 GSE)

WIND/WAVES Summary Plot (Page 1) for 18-SEP-2000, DOY = 262



RAD2  
 Antenna Ey .....  
 Mode LIN(1) .....  
 SUM/SEP SEP .....  
 Toggle OFF .....  
 RAD1  
 Antenna Ex .....  
 Mode LIS(2,3) .....  
 SUM/SEP SUM .....  
 Toggle OFF .....  
 TNR  
 Antenna ExEy .....  
 Mode A-32 .....  
 Sweep ACE .....