

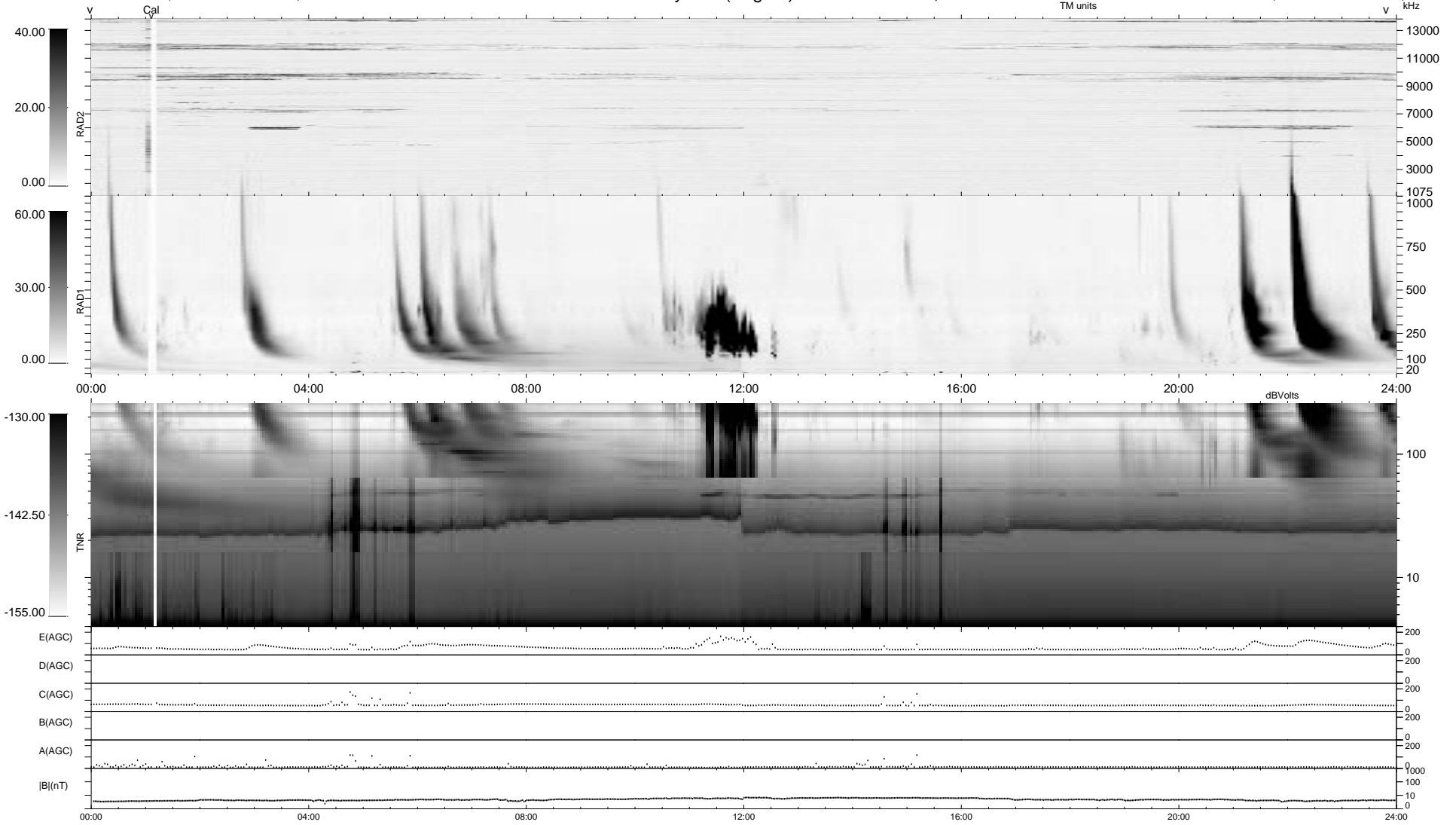
0 bad + 2 good MF/ZMF projected (100%) - 0 missing MFs  
 Avg interval = 180 secs  
 Re = -213.38 (27.69, -211.34, -9.99 GSE)

1.7d VMS-SunOS

LZ version = v01

WIND/WAVES Summary Plot (Page 1) for 10-SEP-2000, DOY = 254

DAILY Thu Sep 11, 2008  
 Re = 217.46 (28.73, -215.33, -9.85 GSE)



RAD2  
 Antenna Ey .....  
 Mode LIN(1) .....  
 SUM/SEP SEP .....  
 Toggle OFF .....  
 RAD1  
 Antenna Ex .....  
 Mode LIS(2,3) .....  
 SUM/SEP SUM .....  
 Toggle OFF .....  
 TNR  
 Antenna ExEy .....  
 Mode A-32 .....  
 Sweep ACE .....