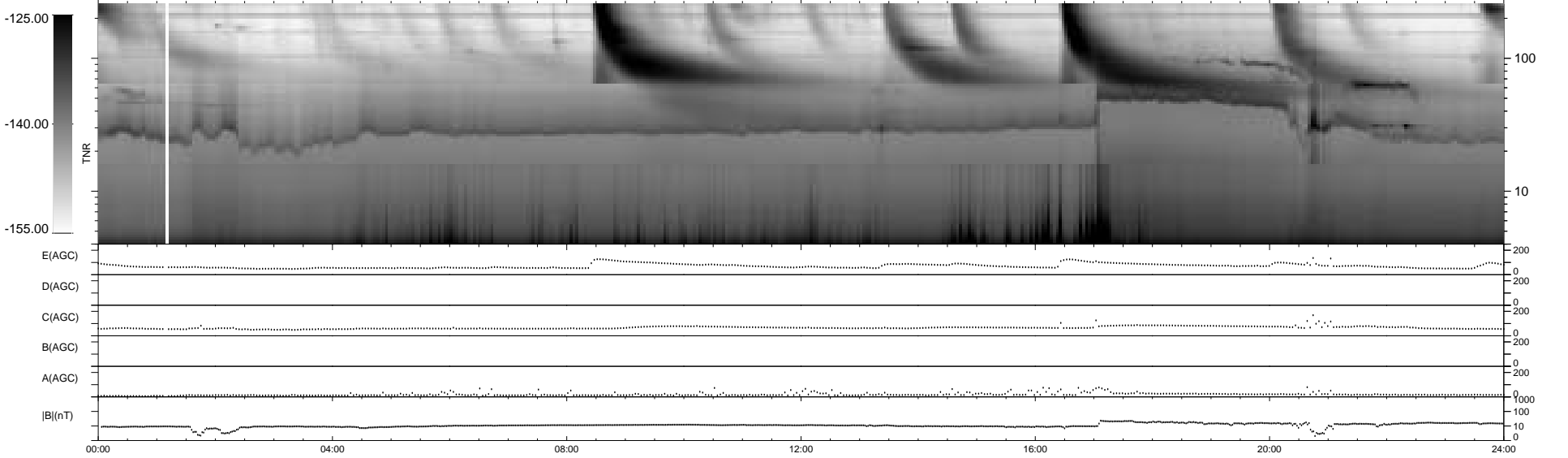
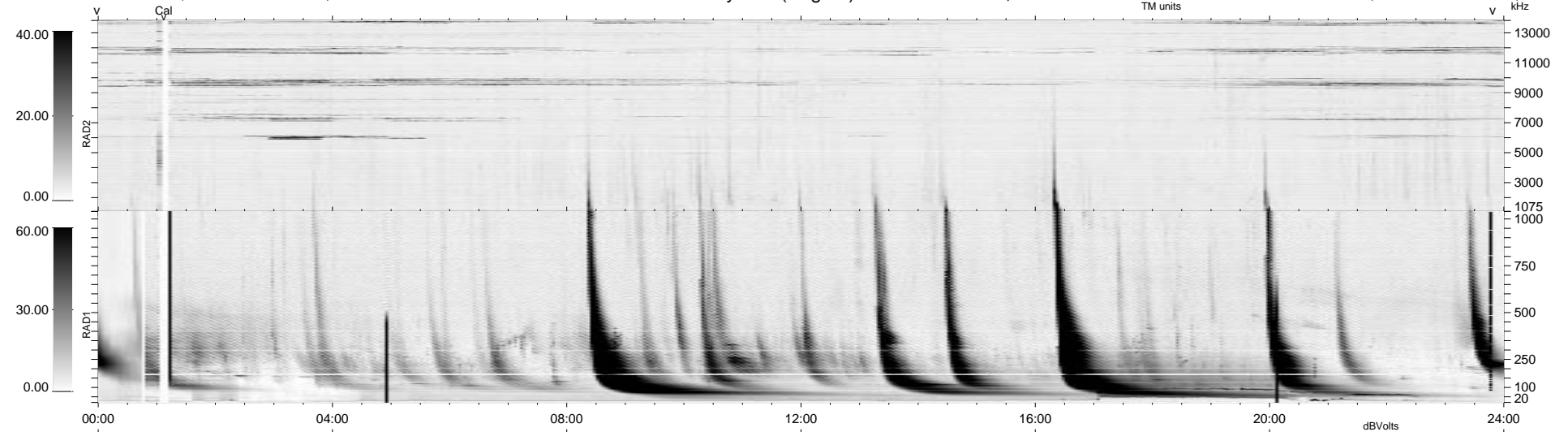


0 bad + 2 good MF/ZMF projected (100%) - 0 missing MFs  
 Avg interval = 180 secs  
 Re = -194.88 (22.12, -193.35, -10.37 GSE)

1.7d VMS-SunOS LZ version = v02  
 DAILY Thu Sep 11, 2008  
 Re = 199.79 (23.74, -198.11, -10.30 GSE)

### WIND/WAVES Summary Plot (Page 1) for 06-SEP-2000, DOY = 250



```

RAD2
Antenna Ey .....
Mode LIN(1) .....
SUM/SEP SEP .....
Toggle OFF .....

RAD1
Antenna Ex .....
Mode LIS(2,8) ..... LIS(2,8)
SUM/SEP SUM ..... SUM
Toggle OFF .....

TNR
Antenna ExEy .....
Mode A-32 .....
Sweep ACE .....
  
```