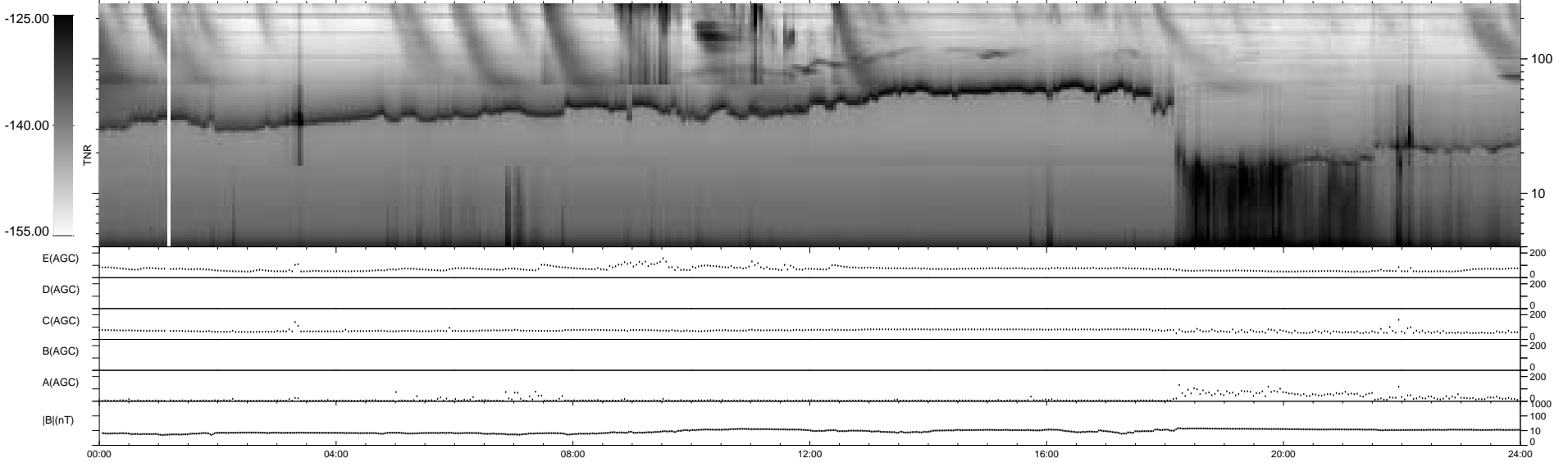
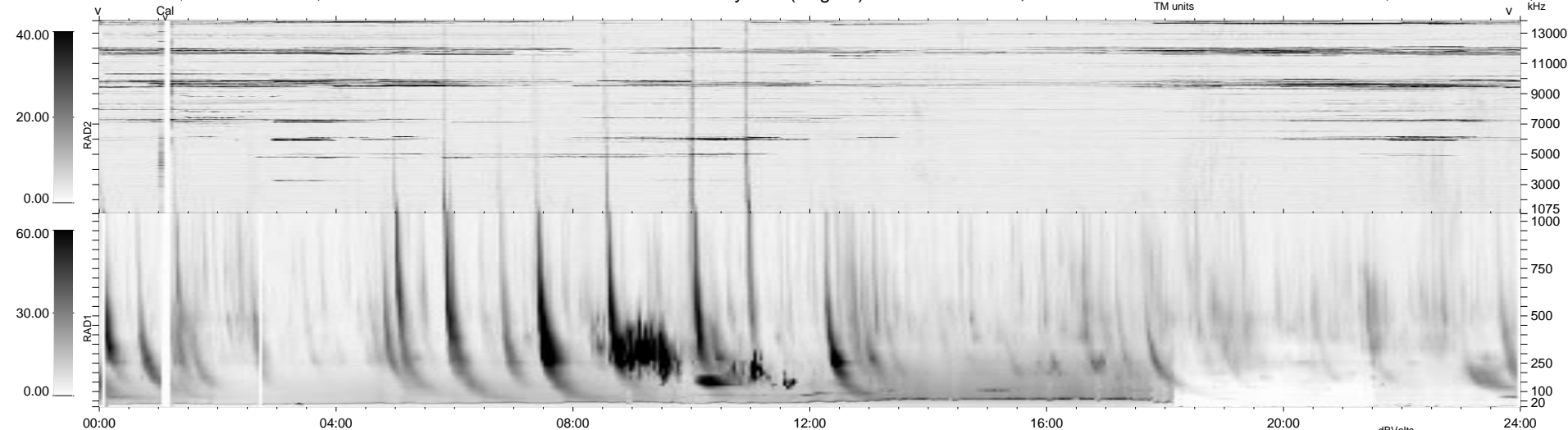


0 bad + 2 good MF/ZMF projected (100%) - 0 missing MFs  
 Avg interval = 180 secs  
 Re = 96.85 (-25.59, -93.03, -8.39 GSE)

1.7d VMS-SunOS LZ version = v01  
 DAILY Thu Sep 11, 2008  
 Re = 106.02 (-20.58, -103.62, -8.88 GSE)

WIND/WAVES Summary Plot (Page 1) for 23-AUG-2000, DOY = 236



RAD2  
 Antenna Ey .....  
 Mode LIN(1) .....  
 SUM/SEP SEP .....  
 Toggle OFF .....  
 RAD1  
 Antenna Ex .....  
 Mode LIS(2,3) .....  
 SUM/SEP SUM .....  
 Toggle OFF .....  
 TNR  
 Antenna ExEy .....  
 Mode A-32 .....  
 Sweep ACE .....