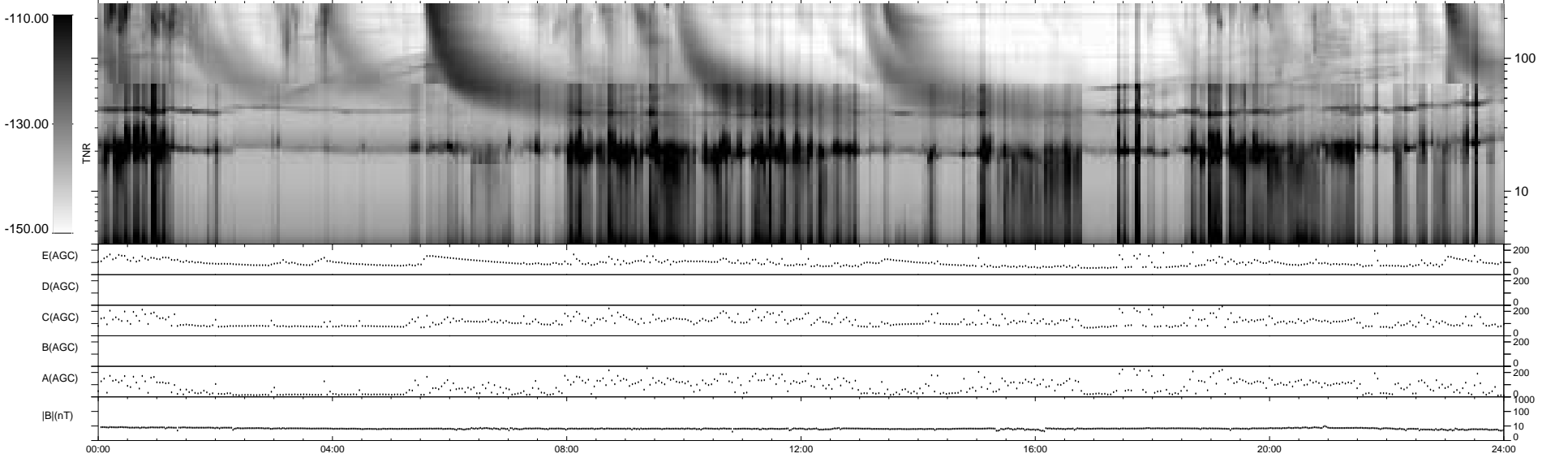
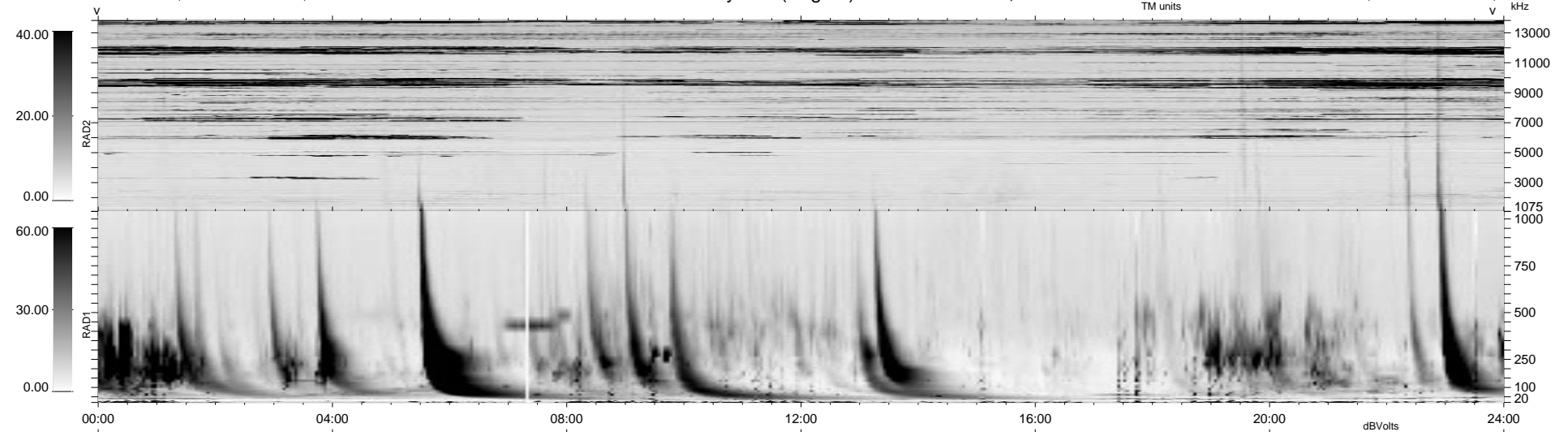


0 bad + 2 good MF/ZMF projected (100%) - 0 missing MFs
 Avg interval = 180 secs
 Re = -44.91 (5.21, -44.44, -3.90 GSE)

1.7d VMS-SunOS LZ version = v01

WIND/WAVES Summary Plot (Page 1) for 02-AUG-2000, DOY = 215

DAILY Thu Sep 11, 2008
 Re = 30.65 (9.22, -29.13, -2.42 GSE)



RAD2
 Antenna Ey
 Mode LIN(1)
 SUM/SEP SEP
 Toggle OFF
 RAD1
 Antenna Ex
 Mode LIS(2,3)
 SUM/SEP SUM
 Toggle OFF
 TNR
 Antenna ExEy
 Mode A-32
 Sweep ACE