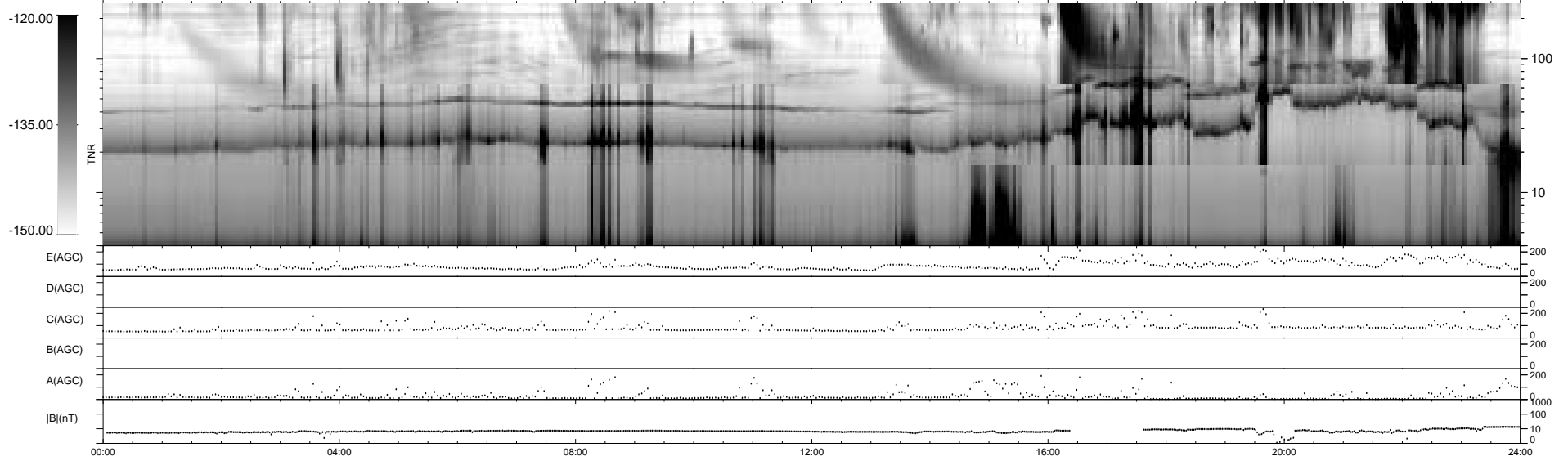
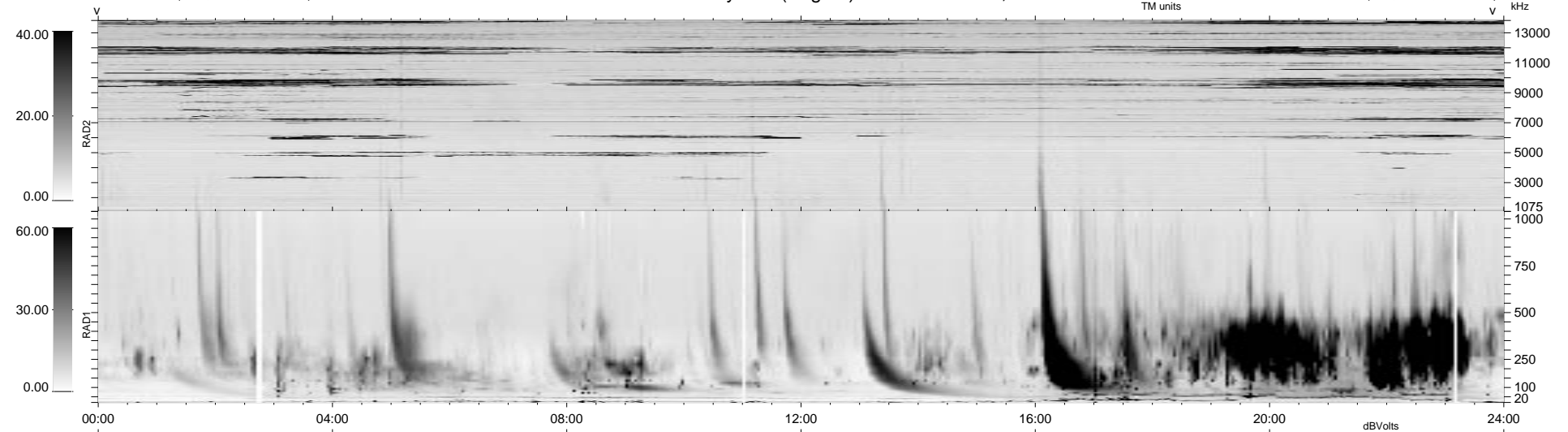


0 bad + 2 good MF/ZMF projected (100%) - 0 missing MFs
 Avg interval = 180 secs
 Re = 60.32 (-3.55, -59.96, -5.52 GSE)

1.7d VMS-SunOS LZ version = v01

WIND/WAVES Summary Plot (Page 1) for 31-JUL-2000, DOY = 213

DAILY Thu Sep 11, 2008
 Re = 54.38 (0.73, -54.15, -4.88 GSE)



```

RAD2
Antenna Ey .....
Mode LIN(1) .....
SUM/SEP SEP .....
Toggle OFF .....
RAD1
Antenna Ex .....
Mode LIS(2,3) .....
SUM/SEP SUM .....
Toggle OFF .....
TNR
Antenna ExEy .....
Mode A-32 .....
Sweep ACE .....
  
```