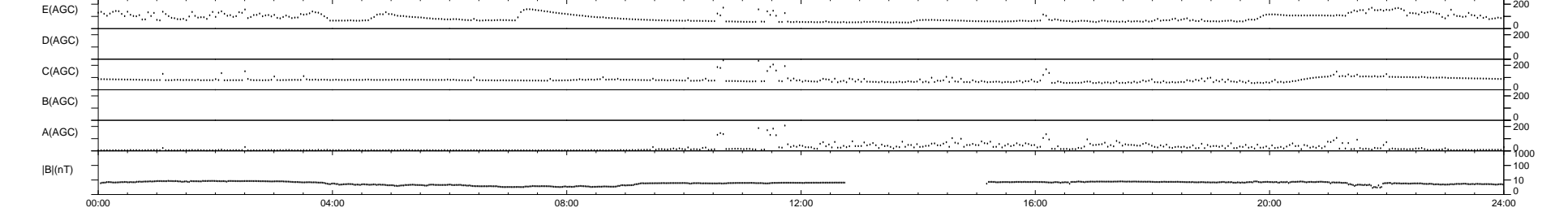
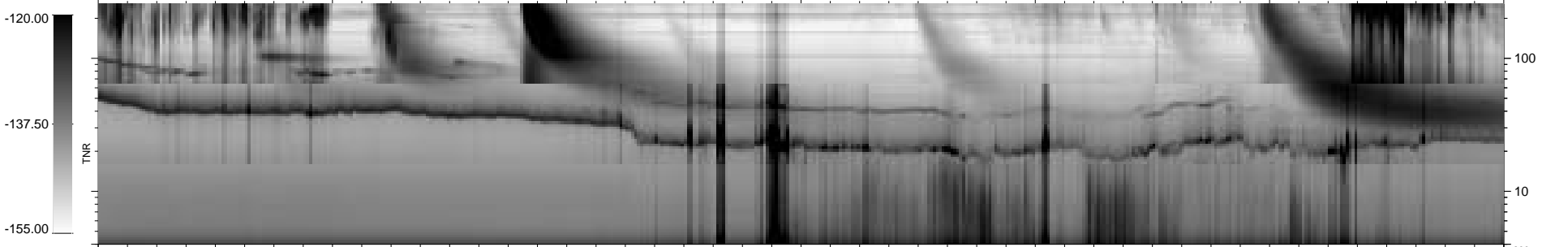
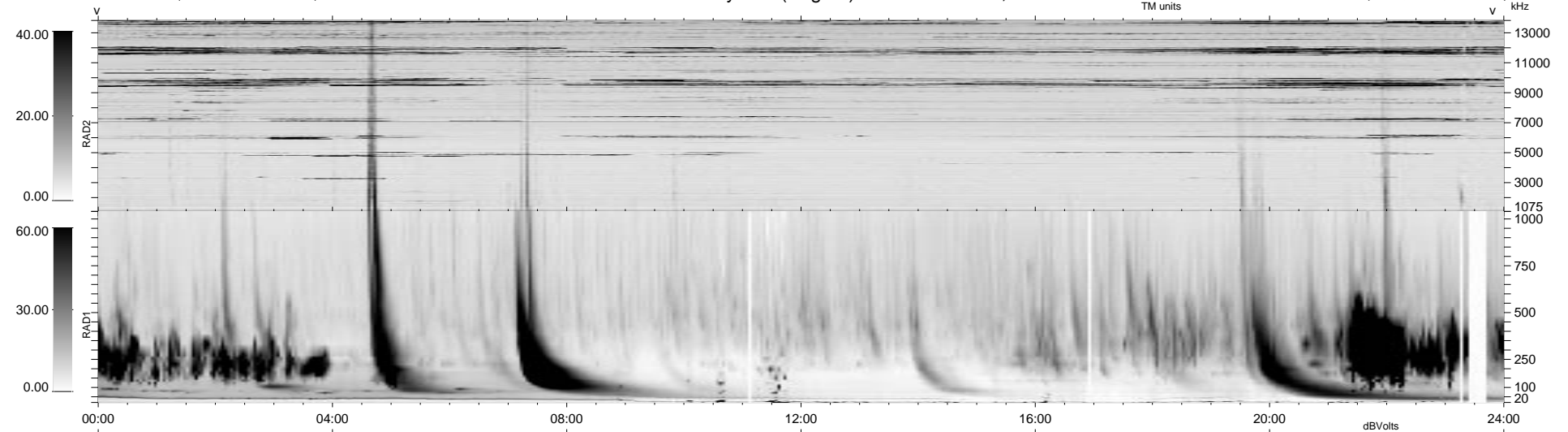


0 bad + 2 good MF/ZMF projected (100%) - 0 missing MFs
 Avg interval = 180 secs
 Re = - 57.73 (-17.14, -54.87, -5.37 GSE)

1.7d VMS-SunOS LZ version = v02
 DAILY Thu Sep 11, 2008
 Re = 62.24 (-14.48, -60.26, -5.82 GSE)

WIND/WAVES Summary Plot (Page 1) for 27-JUL-2000, DOY = 209



RAD2
 Antenna Ey
 Mode LIN(1)
 SUM/SEP SEP
 Toggle OFF
 RAD1
 Antenna Ex
 Mode LIS(2,3)
 SUM/SEP SUM
 Toggle OFF
 TNR
 Antenna ExEy
 Mode A-32
 Sweep ACE