

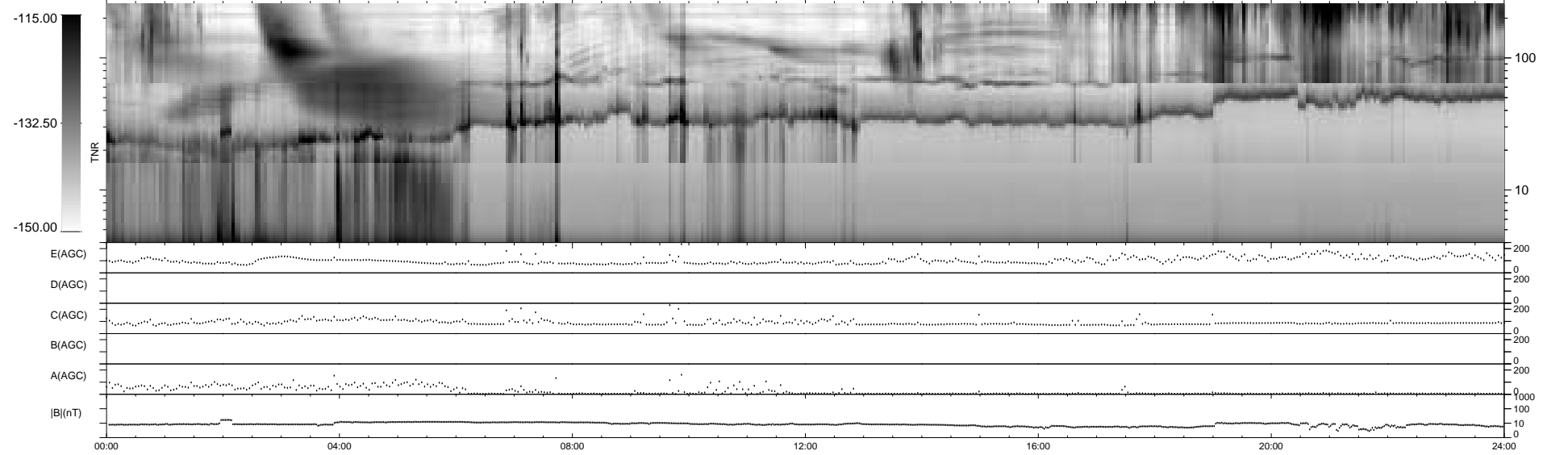
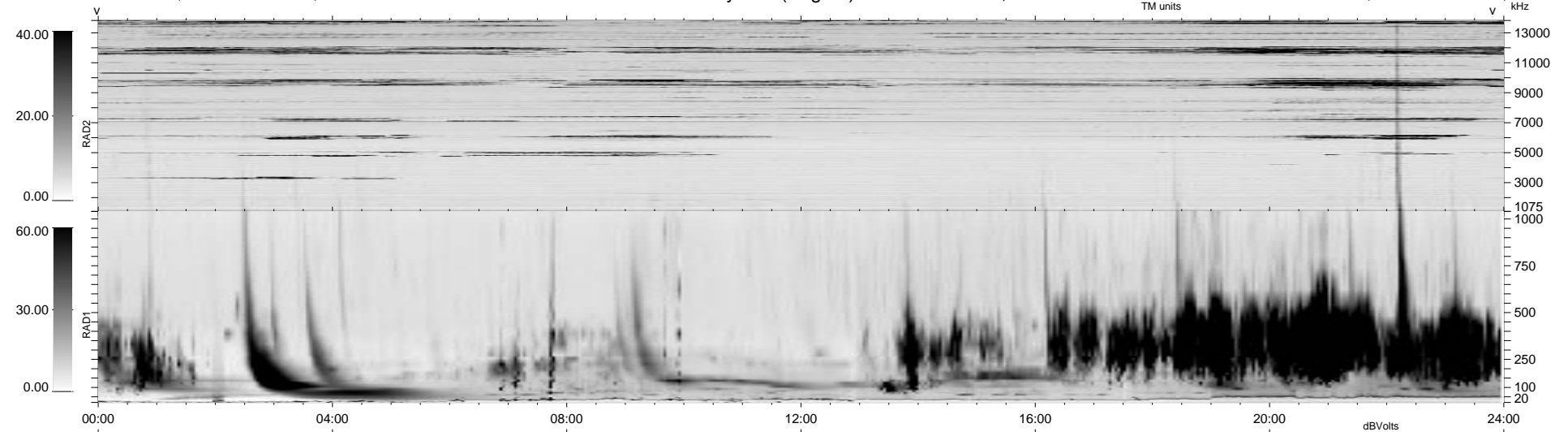
0 bad + 2 good MF/ZMF projected (100%) - 0 missing MFs
 Avg interval = 180 secs
 Re = 50.14 (-18.98, -46.18, -4.59 GSE)

1.7d VMS-SunOS

LZ version = v02

WIND/WAVES Summary Plot (Page 1) for 26-JUL-2000, DOY = 208

DAILY Thu Sep 11, 2008
 Re = 57.69 (-17.16, -54.82, -5.37 GSE)



RAD2
 Antenna Ey
 Mode LIN(1)
 SUM/SEP SEP
 Toggle OFF

RAD1
 Antenna Ex
 Mode LIS(2,3)
 SUM/SEP SUM
 Toggle OFF

TNR
 Antenna ExEy
 Mode A-32
 Sweep ACE