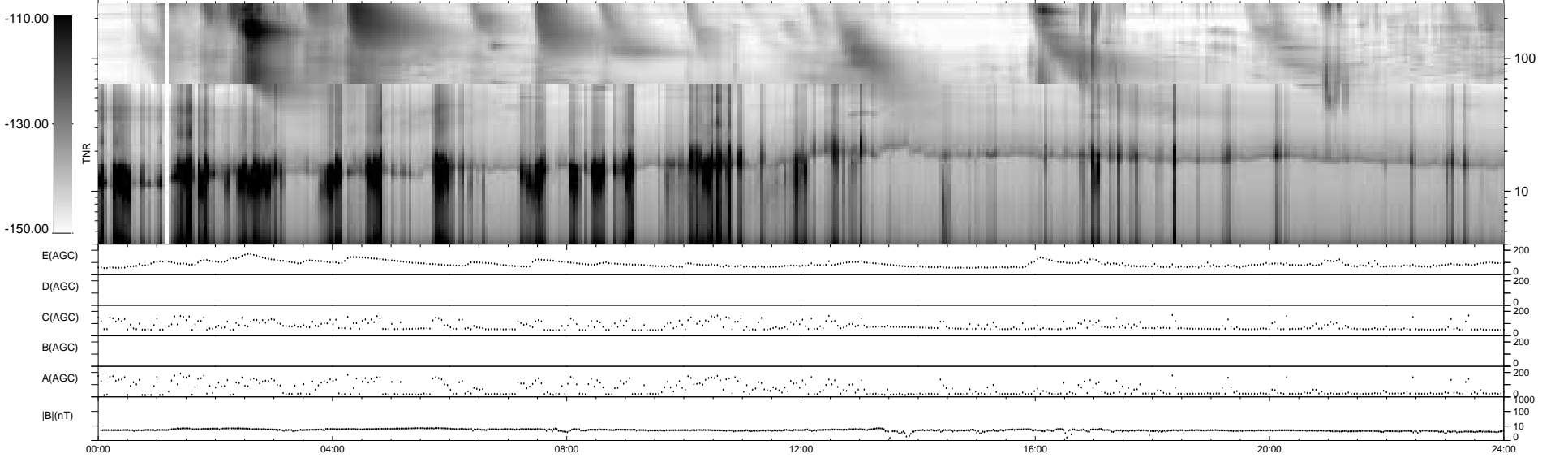
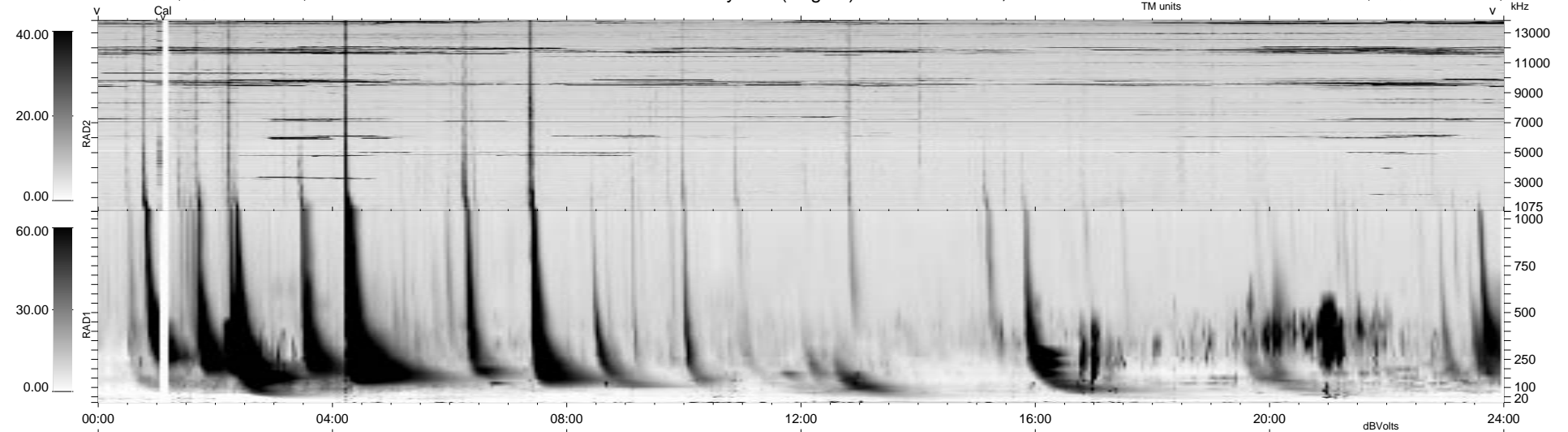


0 bad + 2 good MF/ZMF projected (100%) - 0 missing MFs
 Avg interval = 180 secs
 Re = 69.11 (7.32, -68.43, -6.39 GSE)

1.7d VMS-SunOS LZ version = v01
 DAILY Thu Sep 11, 2008
 Re = 65.40 (10.06, -64.35, -5.98 GSE)

WIND/WAVES Summary Plot (Page 1) for 18-JUL-2000, DOY = 200



RAD2
 Antenna Ey
 Mode LIN(1)
 SUM/SEP SEP
 Toggle OFF
 RAD1
 Antenna Ex
 Mode LIS(2,3)
 SUM/SEP SUM
 Toggle OFF
 TNR
 Antenna ExEy
 Mode A-32
 Sweep ACE