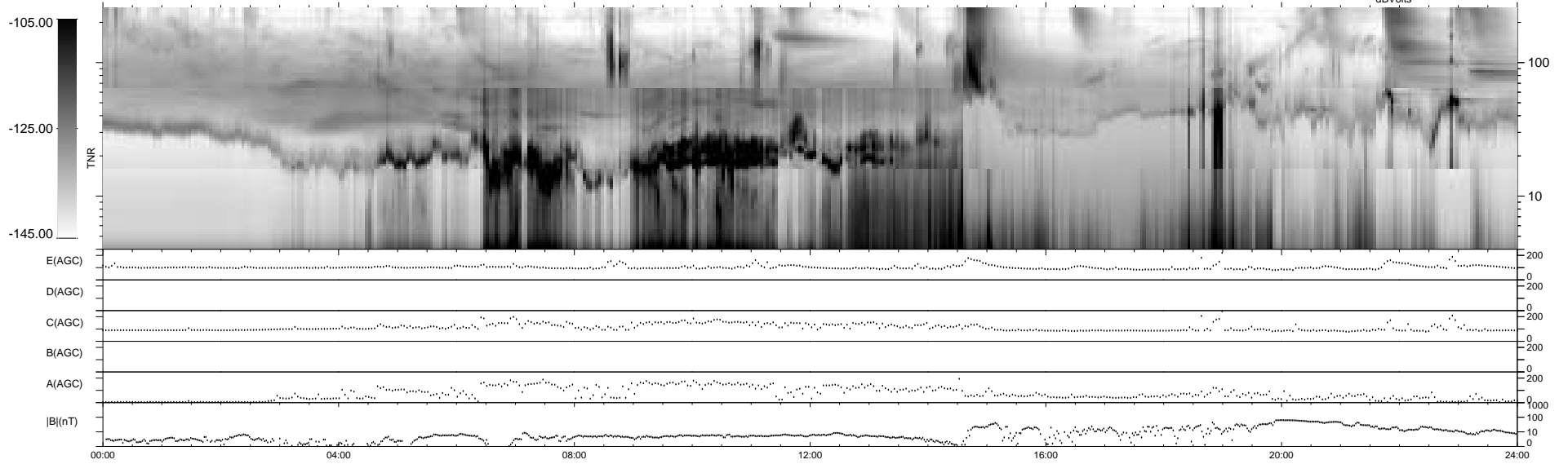
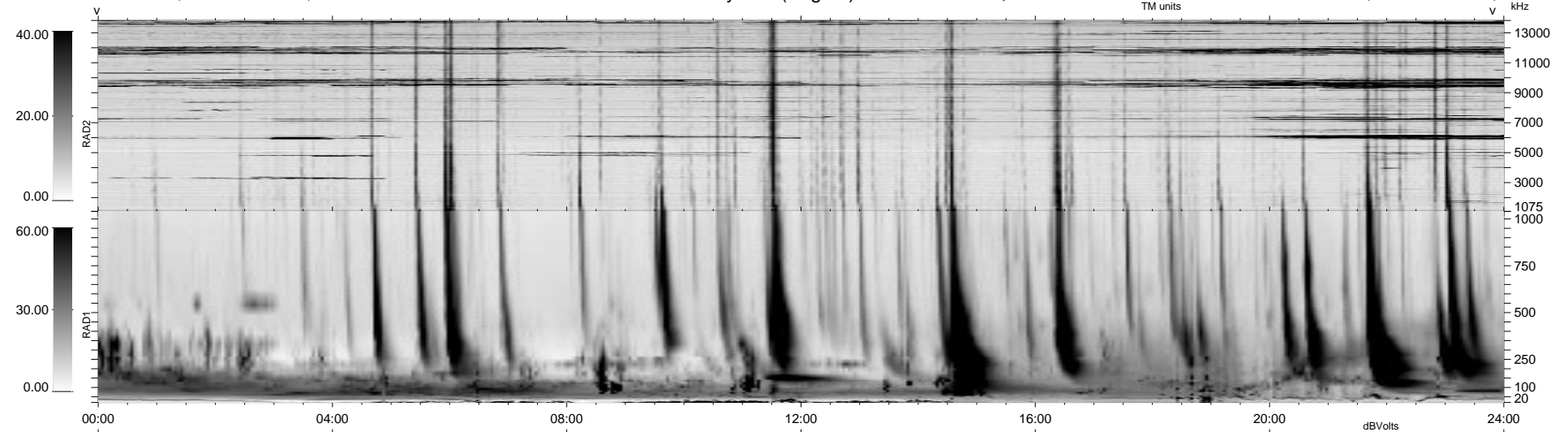


0 bad + 2 good MF/ZMF projected (100%) - 0 missing MFs
 Avg interval = 180 secs
 Re = - 67.48 (-1.63, -67.16, -6.32 GSE)

1.7d VMS-SunOS LZ version = v01

WIND/WAVES Summary Plot (Page 1) for 15-JUL-2000, DOY = 197

DAILY Thu Sep 11, 2008
 Re = 70.12 (1.41, -69.80, -6.56 GSE)



RAD2
 Antenna Ey
 Mode LIN(1)
 SUM/SEP SEP
 Toggle OFF

RAD1
 Antenna Ex
 Mode LIS(2,3)
 SUM/SEP SUM
 Toggle OFF

TNR
 Antenna ExEy
 Mode A-32
 Sweep ACE