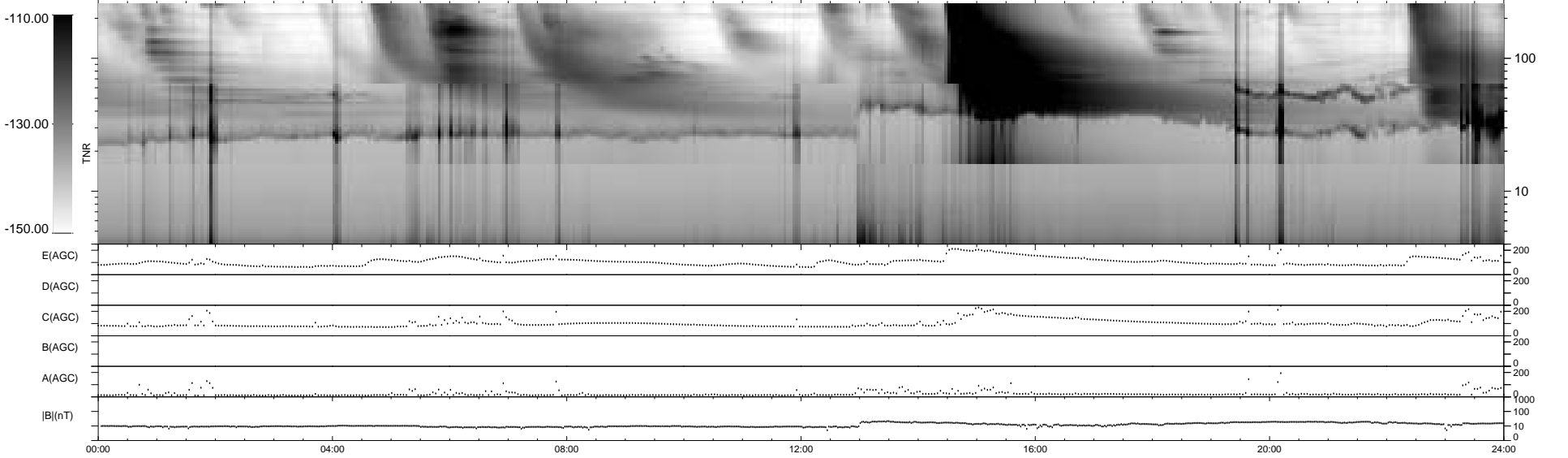
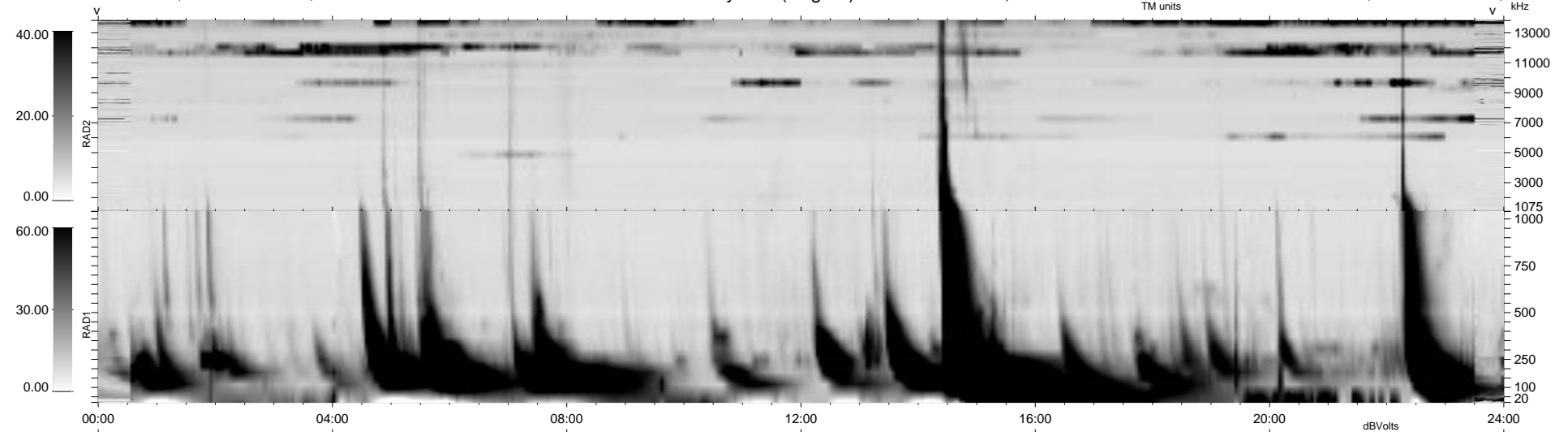


0 bad + 2 good MF/ZMF projected (100%) - 0 missing MFs
 Avg interval = 180 secs
 Re = 65.78 (40.56, -51.46, -5.89 GSE)

1.7d VMS-SunOS LZ version = v01
 DAILY Thu Sep 11, 2008
 Re = 56.63 (37.55, -42.09, -4.94 GSE)

WIND/WAVES Summary Plot (Page 1) for 23-JUN-2000, DOY = 175



```

RAD2
Antenna Ey ..... LIN(1) ..... LIN(1)
Mode LIN(1) ..... LIN(8) ..... LIN(1)
SUM/SEP SEP ..... SEP ..... SEP
Toggle OFF ..... OFF ..... OFF

RAD1
Antenna Ex ..... LIS(16) ..... LIS(2,8)
Mode LIS(2,8) ..... LIS(16) ..... LIS(2,8)
SUM/SEP SUM ..... SUM ..... SUM
Toggle OFF ..... OFF ..... OFF

TNR
Antenna ExEy ..... ACE ..... ACE
Mode A-32 ..... ACE ..... ACE
Sweep ACE ..... ACE ..... ACE
  
```