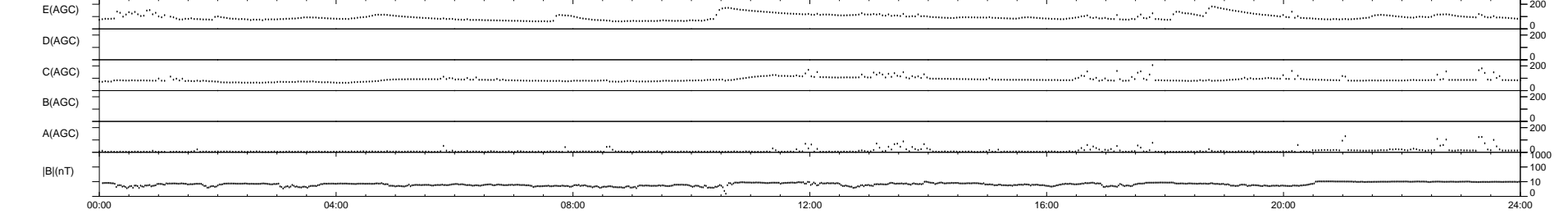
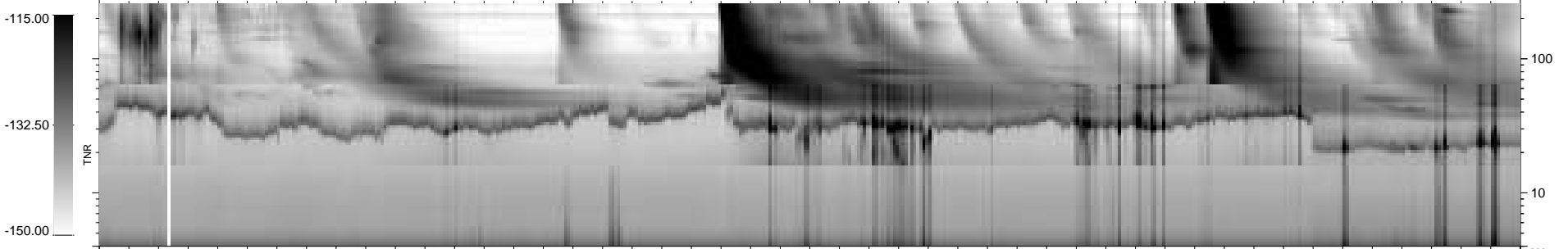
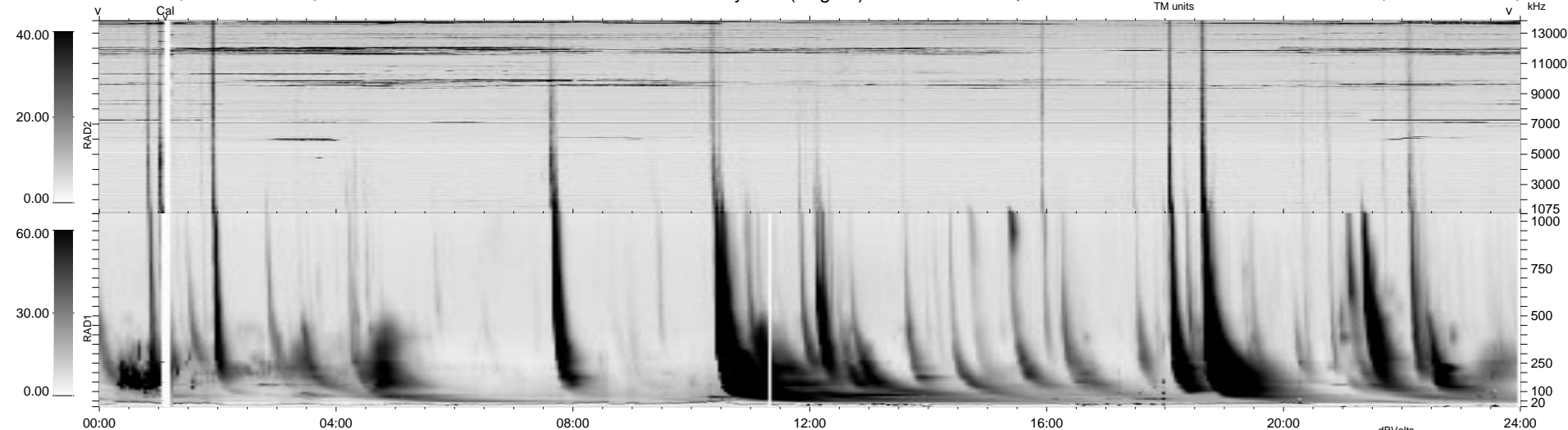


0 bad + 2 good MF/ZMF projected (100%) - 0 missing MFs
 Avg interval = 180 secs
 Re = 72.60 (42.22, -58.69, -6.60 GSE)

1.7d VMS-SunOS LZ version = v01
 DAILY Thu Sep 11, 2008
 Re = 65.84 (40.58, -51.51, -5.90 GSE)

WIND/WAVES Summary Plot (Page 1) for 22-JUN-2000, DOY = 174



RAD2
 Antenna Ey
 Mode LIN(1)
 SUM/SEP SEP
 Toggle OFF

RAD1
 Antenna Ex
 Mode LIS(2,3)
 SUM/SEP SUM
 Toggle OFF

TNR
 Antenna ExEy
 Mode A-32
 Sweep ACE