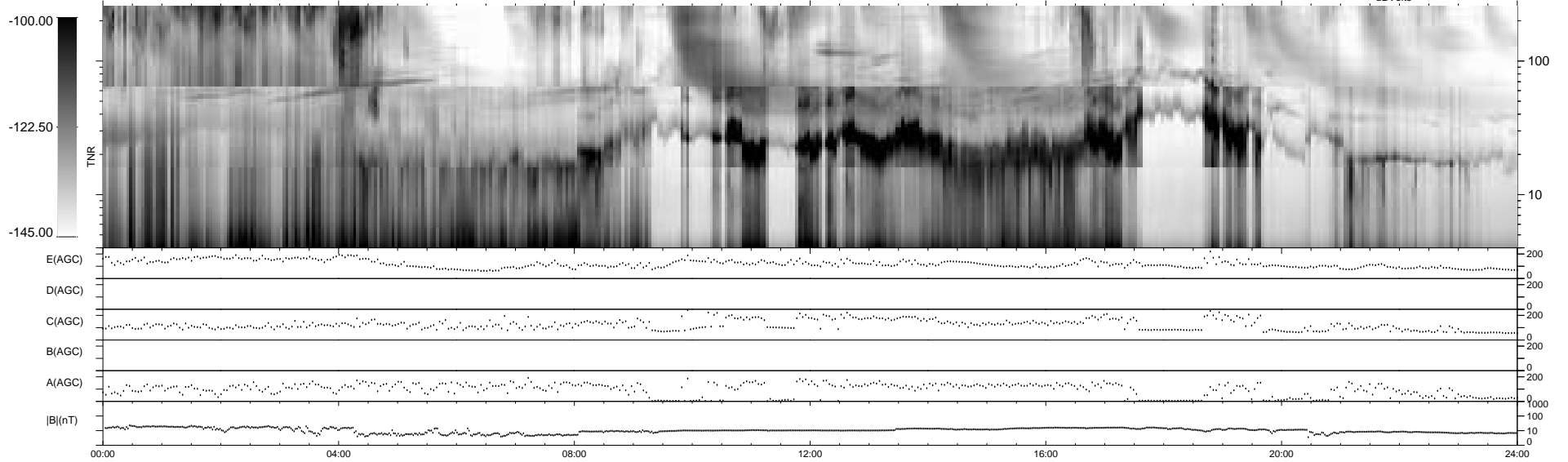
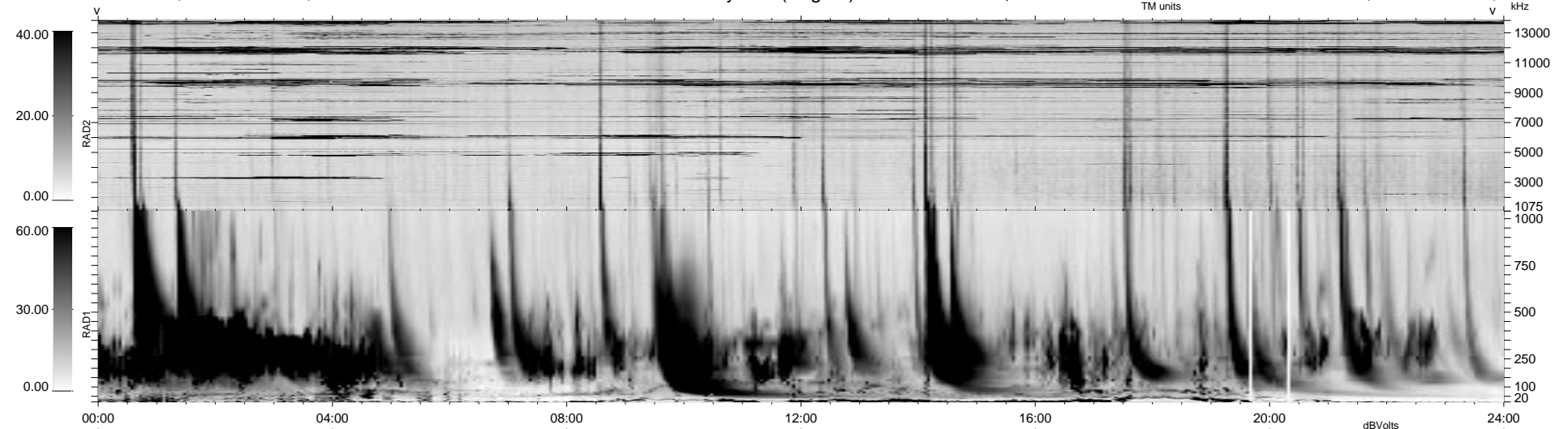


0 bad + 2 good MF/ZMF projected (100%) - 0 missing MFs  
 Avg interval = 180 secs  
 Re = 20.21 (-0.82, -20.14, -1.49 GSE)

1.7d VMS-SunOS LZ version = v02

### WIND/WAVES Summary Plot (Page 1) for 11-JUN-2000, DOY = 163

DAILY Thu Sep 11, 2008  
 Re = 40.35 (9.30, -39.10, -3.51 GSE)



RAD2  
 Antenna Ey  
 Mode LIN(1)  
 SUM/SEP SEP  
 Toggle OFF

RAD1  
 Antenna Ex  
 Mode LIS(2,3)  
 SUM/SEP SUM  
 Toggle OFF

TNR  
 Antenna ExEy  
 Mode A-32  
 Sweep ACE