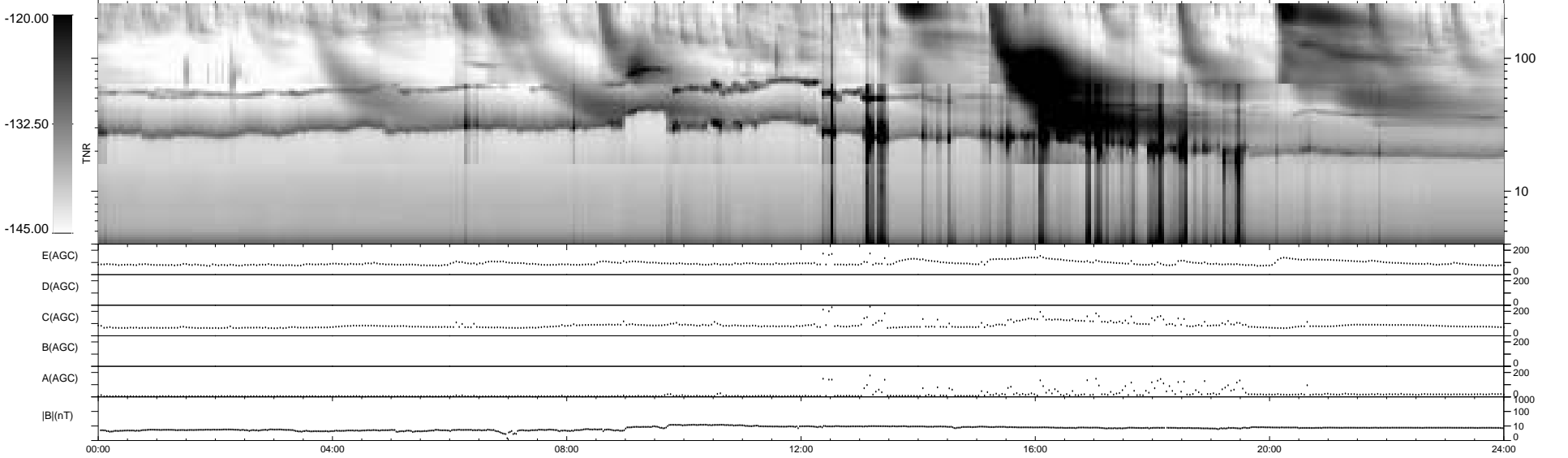
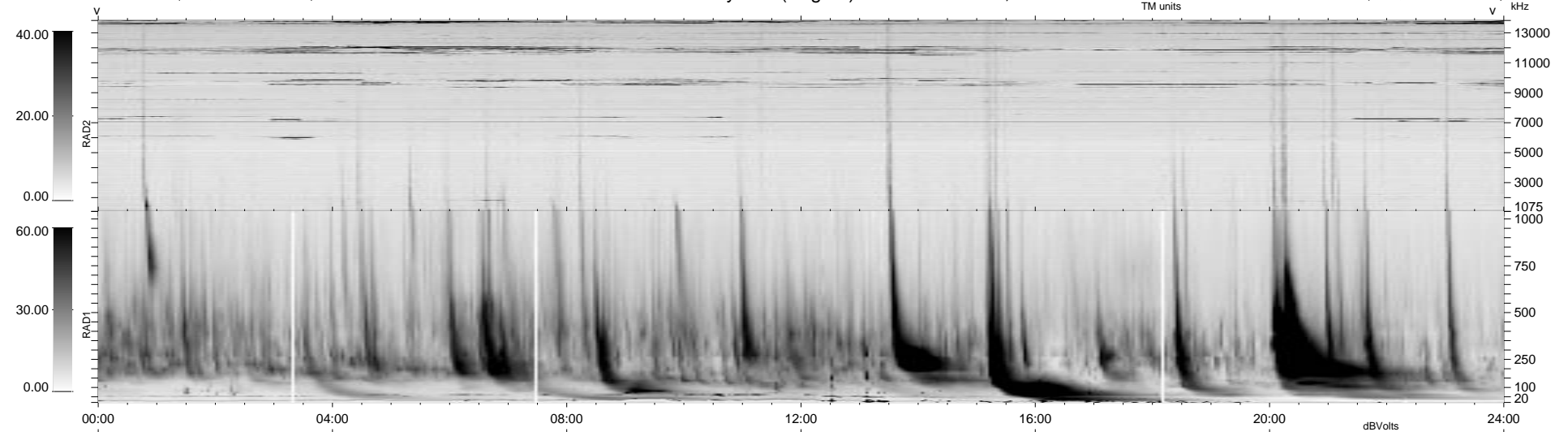


0 bad + 2 good MF/ZMF projected (100%) - 0 missing MFs  
 Avg interval = 180 secs  
 Re = - 80.81 (57.10, -56.68, -7.50 GSE)

1.7d VMS-SunOS LZ version = v01  
 DAILY Thu Sep 11, 2008  
 Re = 79.21 (57.22, -54.28, -7.35 GSE)

WIND/WAVES Summary Plot (Page 1) for 03-JUN-2000, DOY = 155



E(AGC) ..... 200  
 D(AGC) ..... 200  
 C(AGC) ..... 200  
 B(AGC) ..... 200  
 A(AGC) ..... 200  
 |B|(nT) ..... 1000  
 ..... 100  
 ..... 10  
 ..... 0

00:00 04:00 08:00 12:00 16:00 20:00 24:00

RAD2  
 Antenna Ey .....  
 Mode LIN(1) .....  
 SUM/SEP SEP .....  
 Toggle OFF .....  
 RAD1  
 Antenna Ex .....  
 Mode LIS(2,3) .....  
 SUM/SEP SUM .....  
 Toggle OFF .....  
 TNR  
 Antenna ExEy .....  
 Mode A-32 .....  
 Sweep ACE .....