

0 bad + 2 good MF/ZMF projected (100%) - 0 missing MFs  
 Avg interval = 180 secs  
 Re = 75.34 (49.56, -56.31, -6.92 GSE)

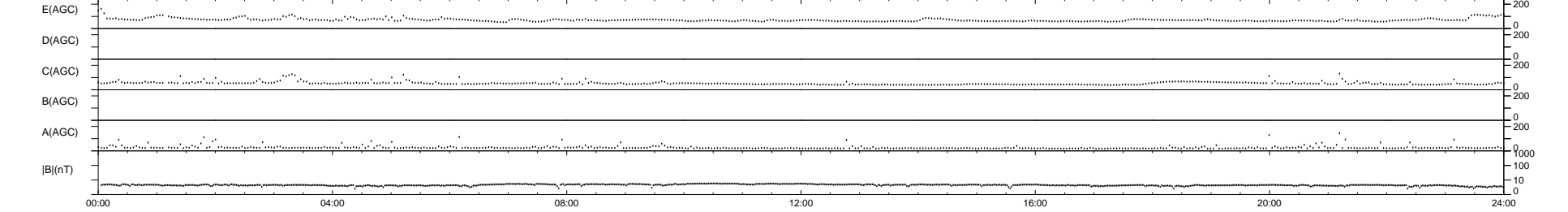
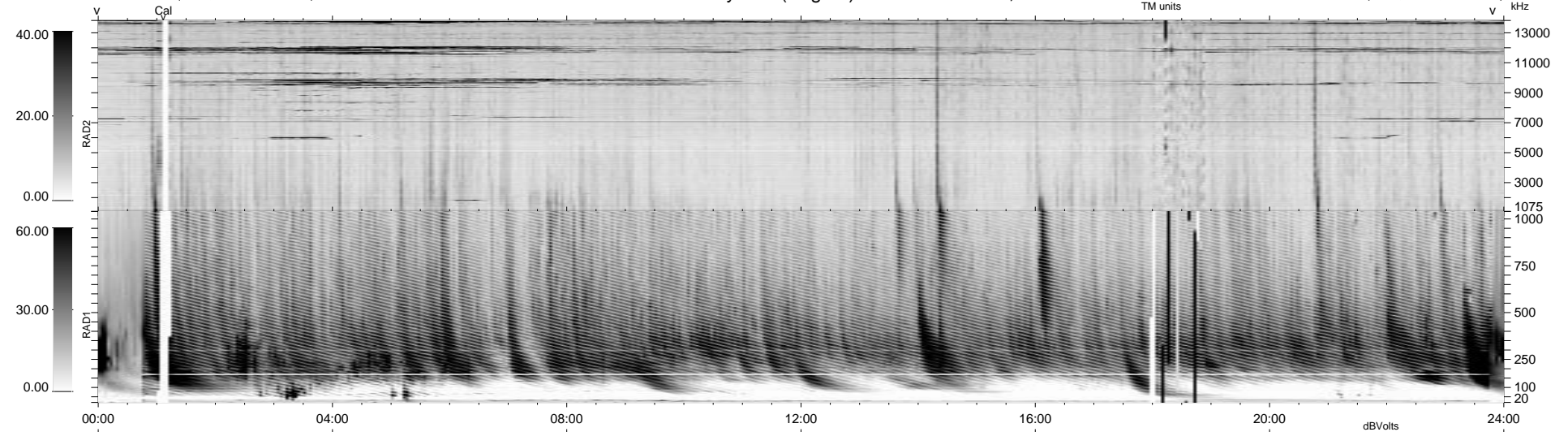
1.7d VMS-SunOS

LZ version = v02

WIND/WAVES Summary Plot (Page 1) for 31-MAY-2000, DOY = 152

DAILY Thu Sep 11, 2008

Re = 78.94 (53.30, -57.77, -7.29 GSE)



RAD2  
 Antenna Ey .....  
 Mode LIN(1) .....  
 SUM/SEP SEP .....  
 Toggle OFF .....  
 RAD1  
 Antenna Ex .....  
 Mode LIS(2,3) .....  
 SUM/SEP SUM .....  
 Toggle OFF .....  
 TNR  
 Antenna ExEy .....  
 Mode A-32 .....  
 Sweep ACE .....  
 LIS(2,8) SUM