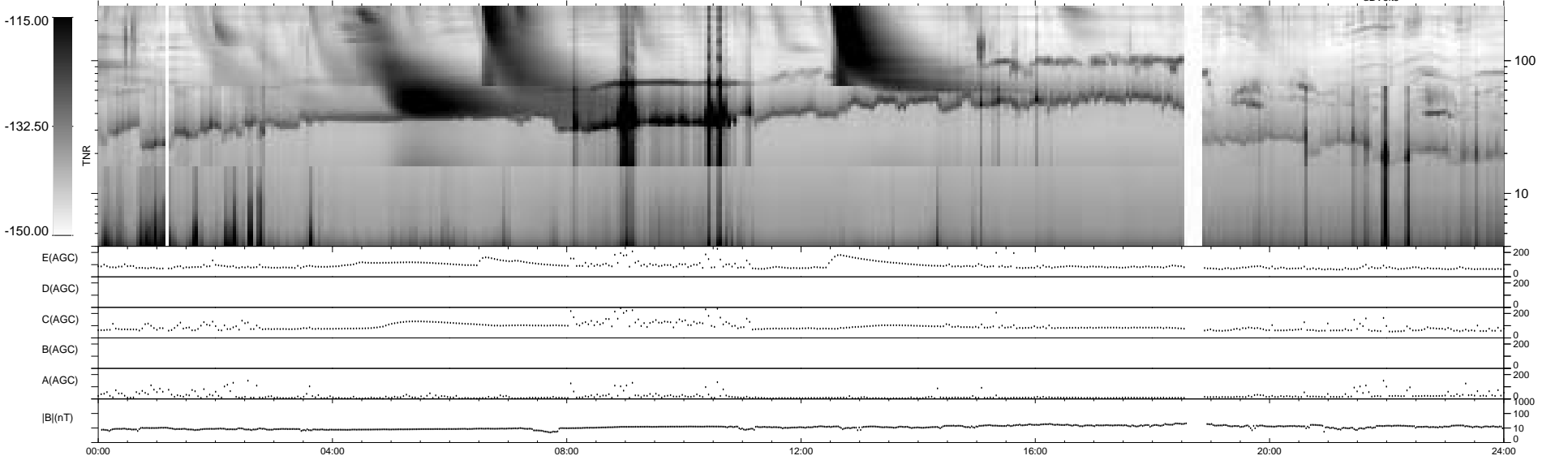
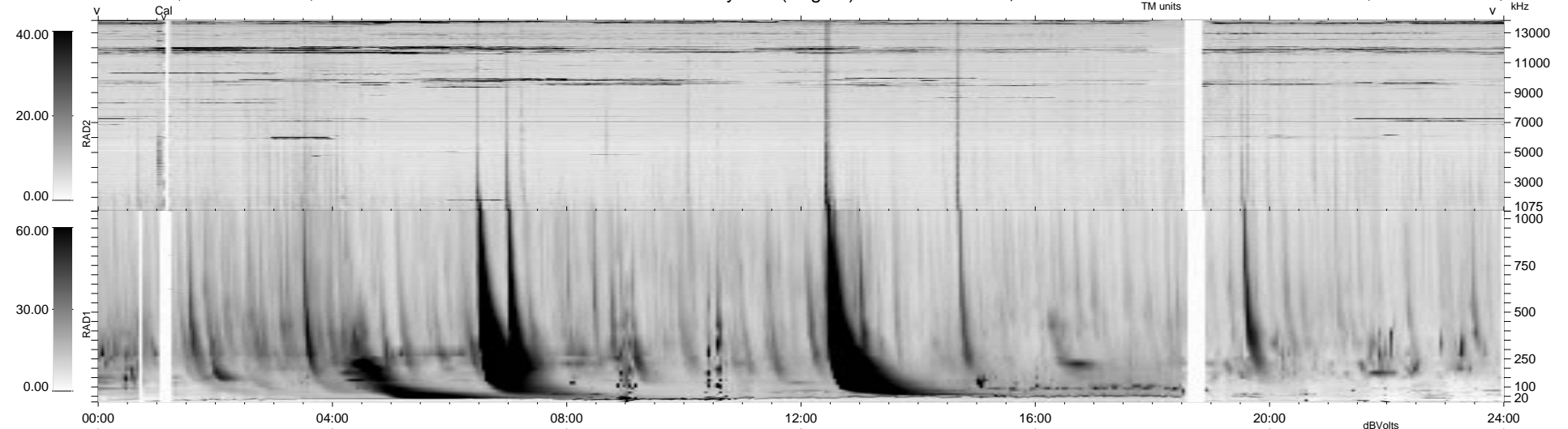


0 bad + 2 good MF/ZMF projected (100%) - 0 missing MFs
 Avg interval = 180 secs
 Re = - 60.17 (36.53, -47.50, -5.38 GSE)

1.7d VMS-SunOS LZ version = v02
 DAILY Thu Sep 11, 2008
 Re = 69.48 (44.31, -53.14, -6.33 GSE)

WIND/WAVES Summary Plot (Page 1) for 29-MAY-2000, DOY = 150



E(AGC) 0 200
 D(AGC) 0 200
 C(AGC) 0 200
 B(AGC) 0 200
 A(AGC) 0 200
 |B|(nT) 0 1000
 0 10
 0 0

RAD2
 Antenna Ey
 Mode LIN(1)
 SUM/SEP SEP
 Toggle OFF

RAD1
 Antenna Ex
 Mode LIS(2,3)
 SUM/SEP SUM
 Toggle OFF

TNR
 Antenna ExEy
 Mode A-32
 Sweep ACE