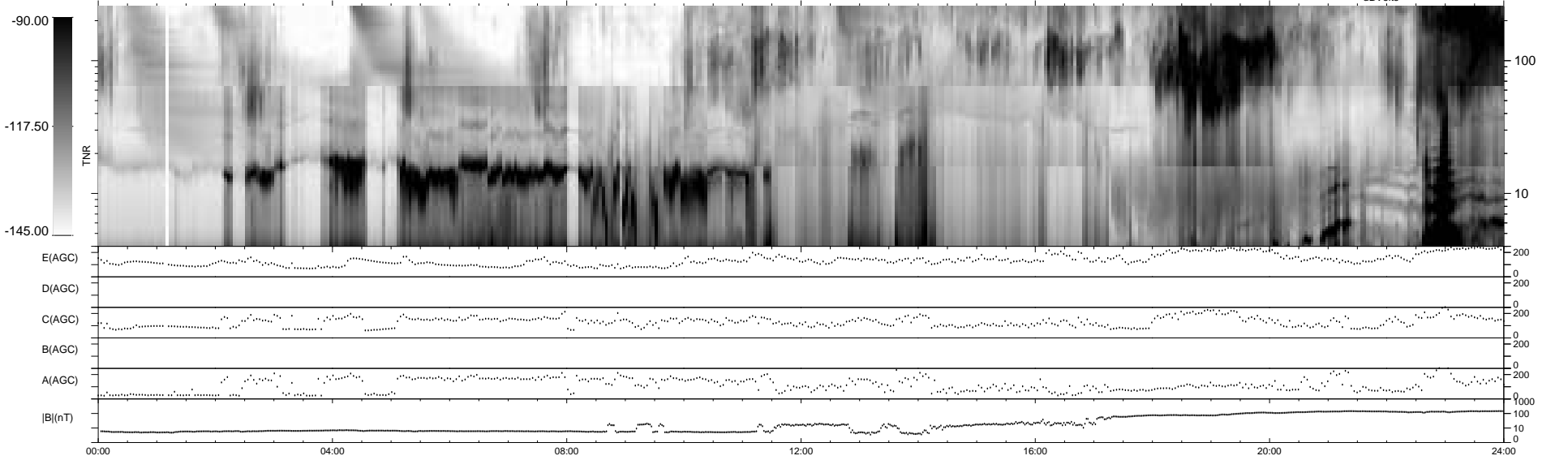
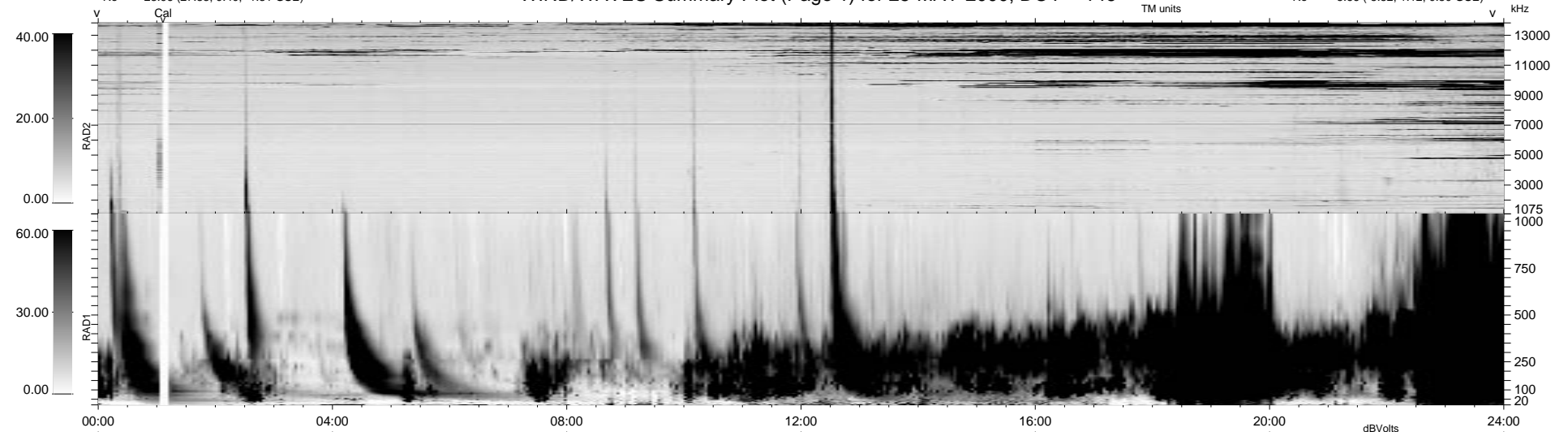


0 bad + 2 good MF/ZMF projected (100%) - 0 missing MFs  
 Avg interval = 180 secs  
 Re = 28.96 (27.33, 9.40, -1.81 GSE)

1.7d VMS-SunOS LZ version = v01

WIND/WAVES Summary Plot (Page 1) for 25-MAY-2000, DOY = 146

DAILY Thu Sep 11, 2008  
 Re = 5.66 (-5.52, 1.12, 0.50 GSE)



```

RAD2
Antenna Ey .....
Mode LIN(1) .....
SUM/SEP SEP .....
Toggle OFF .....

RAD1
Antenna Ex .....
Mode LIS(2,3) .....
SUM/SEP SUM .....
Toggle OFF .....

TNR
Antenna ExEy .....
Mode A-32 .....
Sweep ACE .....
  
```