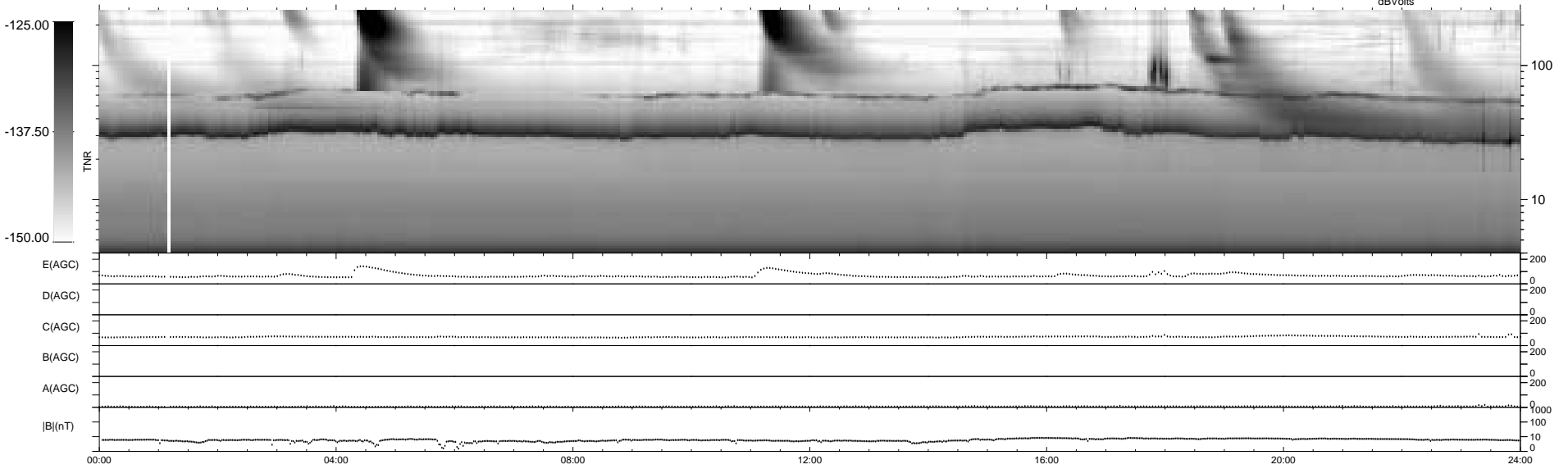
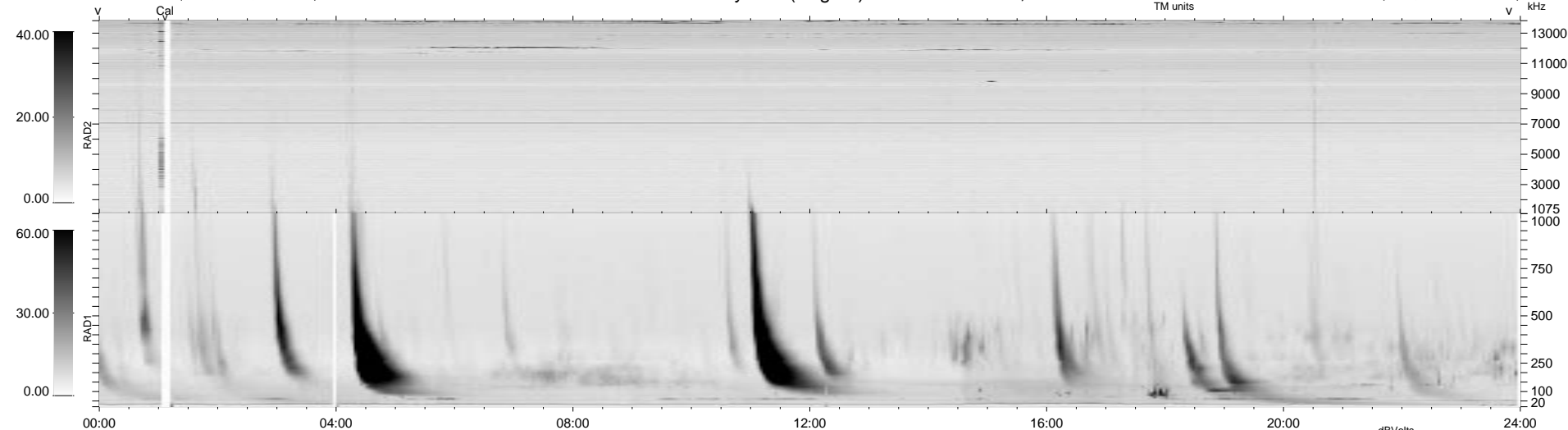


0 bad + 2 good MF/ZMF projected (100%) - 0 missing MFs
 Avg interval = 180 secs
 Re = 84.73 (78.12, -31.96, -7.35 GSE)

1.7d VMS-SunOS LZ version = v01

WIND/WAVES Summary Plot (Page 1) for 09-MAY-2000, DOY = 130

DAILY Thu Sep 11, 2008
 Re = 89.98 (83.83, -31.71, -7.94 GSE)



RAD2
 Antenna Ey
 Mode LIN(1)
 SUM/SEP SEP
 Toggle OFF
 RAD1
 Antenna Ex
 Mode LIS(2,3)
 SUM/SEP SUM
 Toggle OFF
 TNR
 Antenna ExEy
 Mode A-32
 Sweep ACE