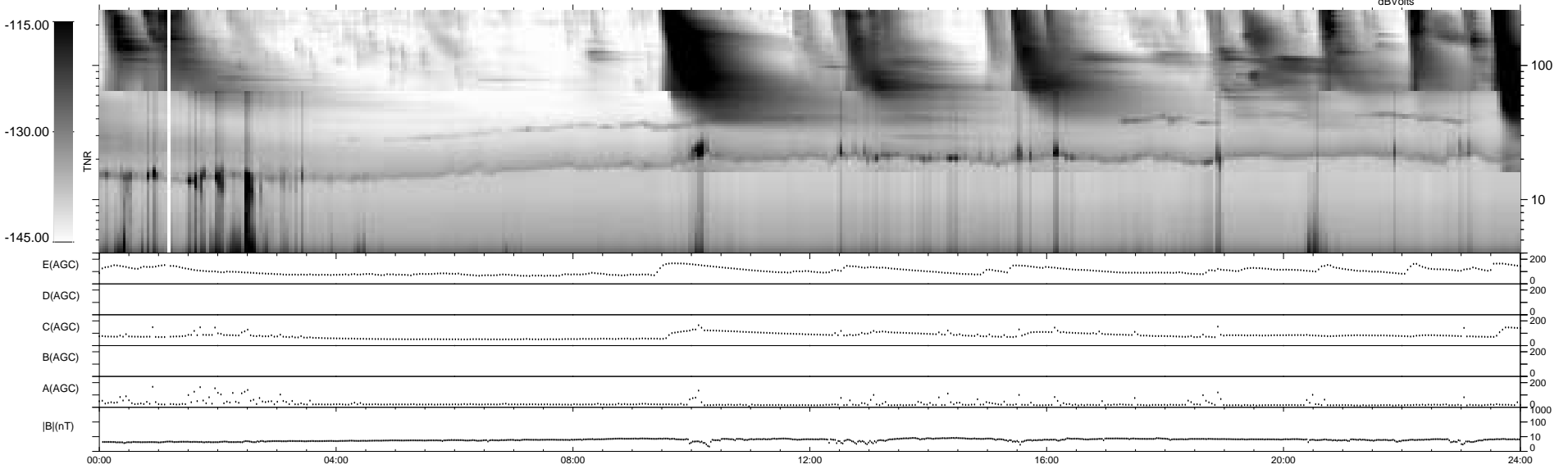
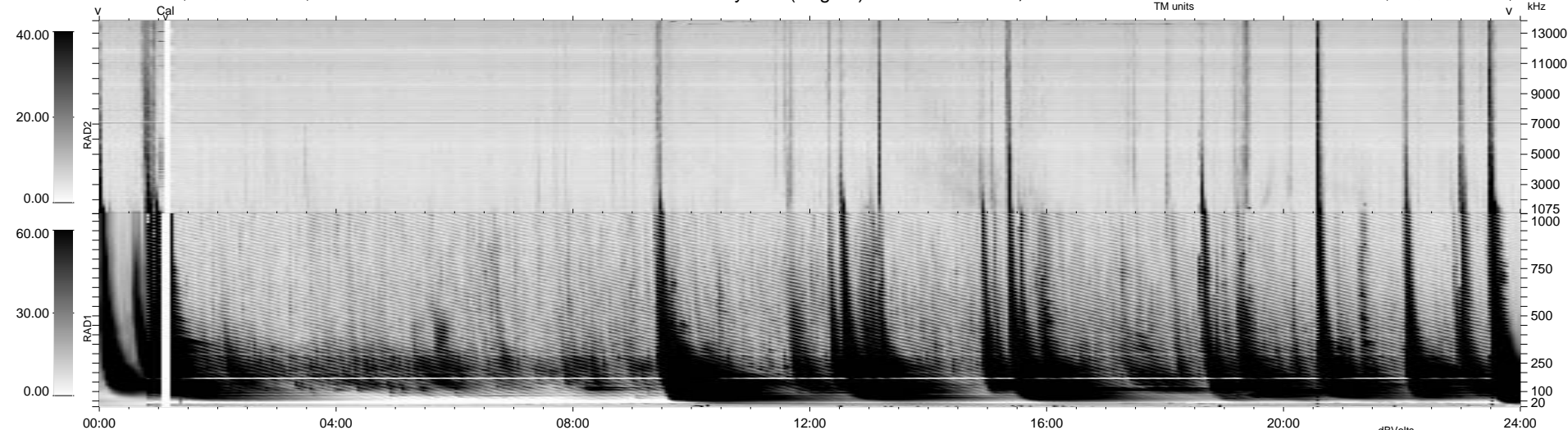


0 bad + 2 good MF/ZMF projected (100%) - 0 missing MFs
 Avg interval = 180 secs
 Re = 100.10 (99.48, 6.66, -8.93 GSE)

1.7d VMS-SunOS LZ version = v01
 DAILY Thu Sep 11, 2008
 Re = 100.25 (99.50, 8.14, -9.09 GSE)

WIND/WAVES Summary Plot (Page 1) for 21-APR-2000, DOY = 112



RAD2
 Antenna Ey
 Mode LIN(1)
 SUM/SEP SEP
 Toggle OFF
 RAD1
 Antenna Ex
 Mode LIS(2,8) LIS(2,8)
 SUM/SEP SUM SEP SUM
 Toggle OFF
 TNR
 Antenna ExEy
 Mode A-32
 Sweep ACE