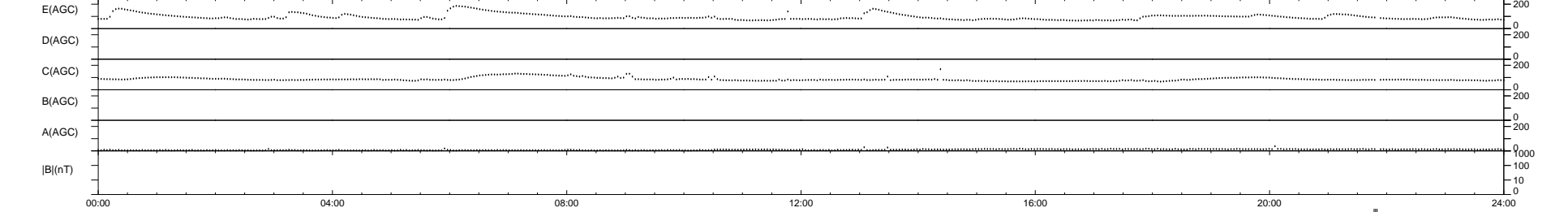
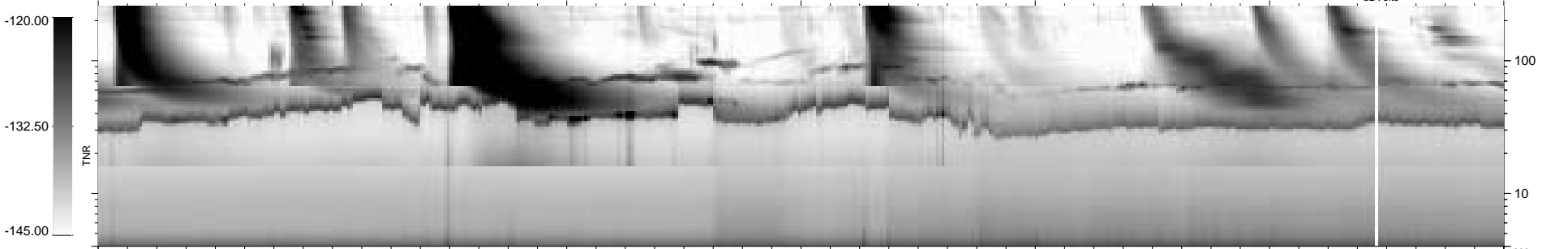
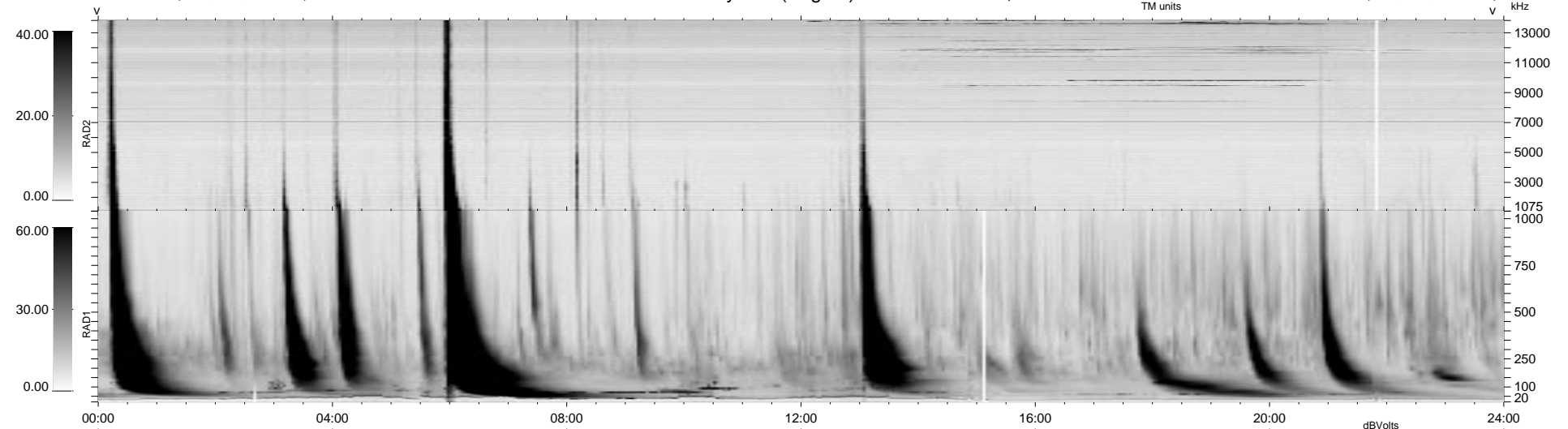


10 bad + 926 good MF/939MF projected (98%) - 3 missing MFs
 Avg interval = 180 secs
 Re = 84.17 (83.88, -2.41, -6.56 GSE)

1.7d VMS-SunOS LZ version = v01

WIND/WAVES Summary Plot (Page 1) for 16-APR-2000, DOY = 107

DAILY Mon Sep 15, 2008
 Re = 89.55 (89.26, -0.31, -7.25 GSE)



RAD2
 Antenna Ey
 Mode LIN(1)
 SUM/SEP SEP
 Toggle OFF
 RAD1
 Antenna Ex
 Mode LIS(2,3)
 SUM/SEP SUM
 Toggle OFF
 TNR
 Antenna ExEy
 Mode A-32
 Sweep ACE