

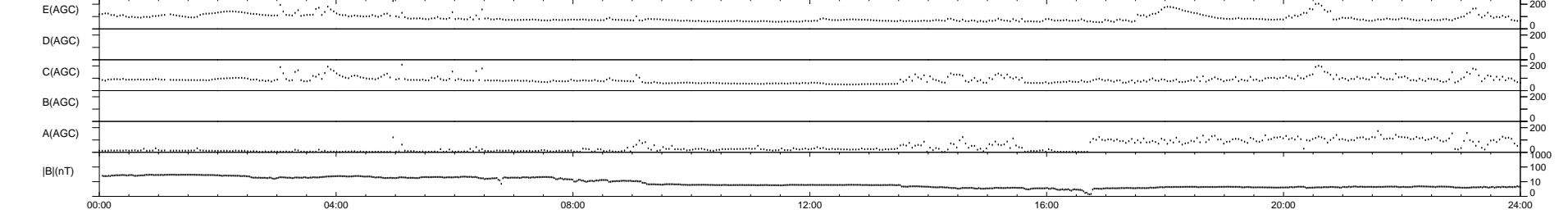
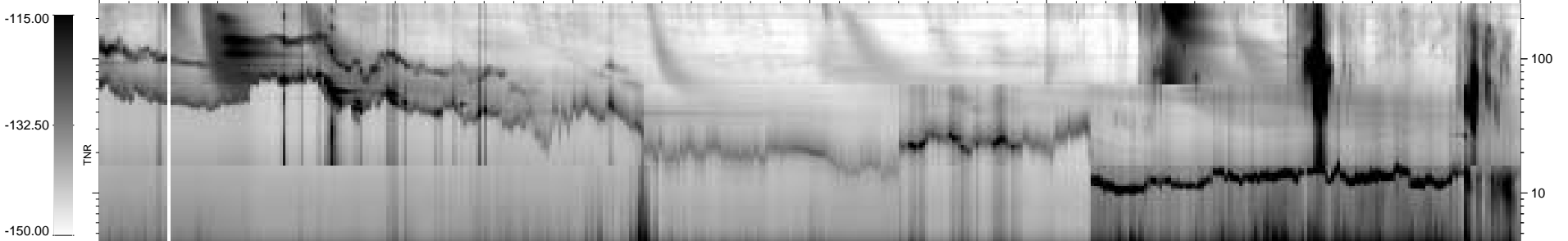
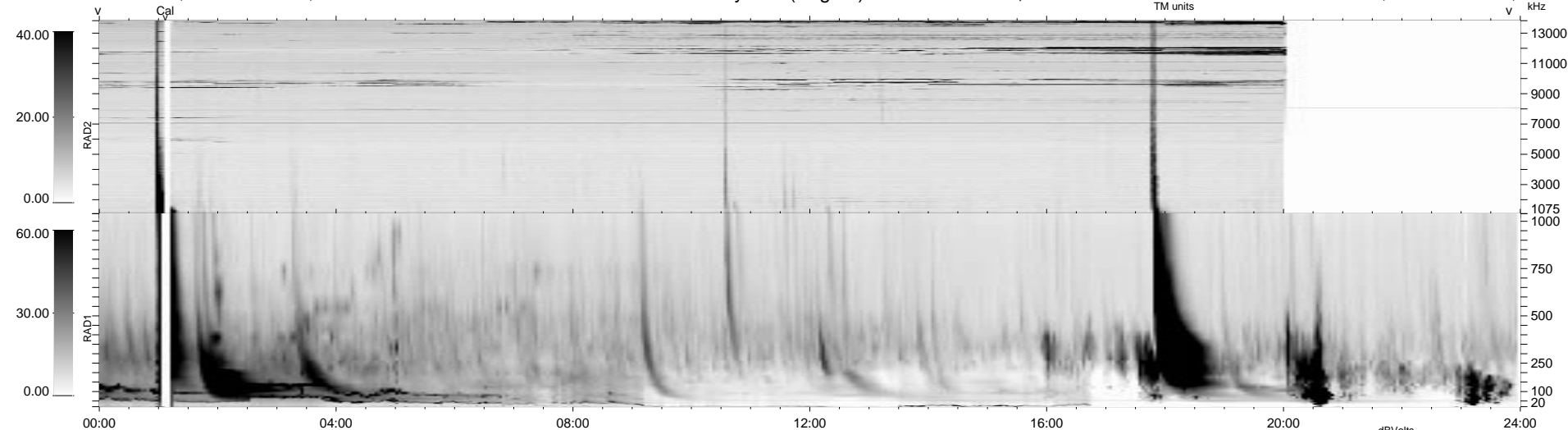
0 bad + 2 good MF/ZMF projected (100%) - 0 missing MFs
 Avg interval = 180 secs
 Re = 63.97 (50.65, 38.62, -6.04 GSE)

1.7d VMS-SunOS LZ version = v01

DAILY Thu Sep 11, 2008

Re = 49.74 (35.89, 34.02, -5.35 GSE)

WIND/WAVES Summary Plot (Page 1) for 07-APR-2000, DOY = 98



```

RAD2
Antenna Ey .....
Mode LIN(1) .....
SUM/SEP SEP .....
Toggle OFF .....
RAD1
Antenna Ex .....
Mode LIS(2,3) .....
SUM/SEP SUM .....
Toggle OFF .....
TNR
Antenna ExEy .....
Mode A-32 .....
Sweep ACE .....
  
```