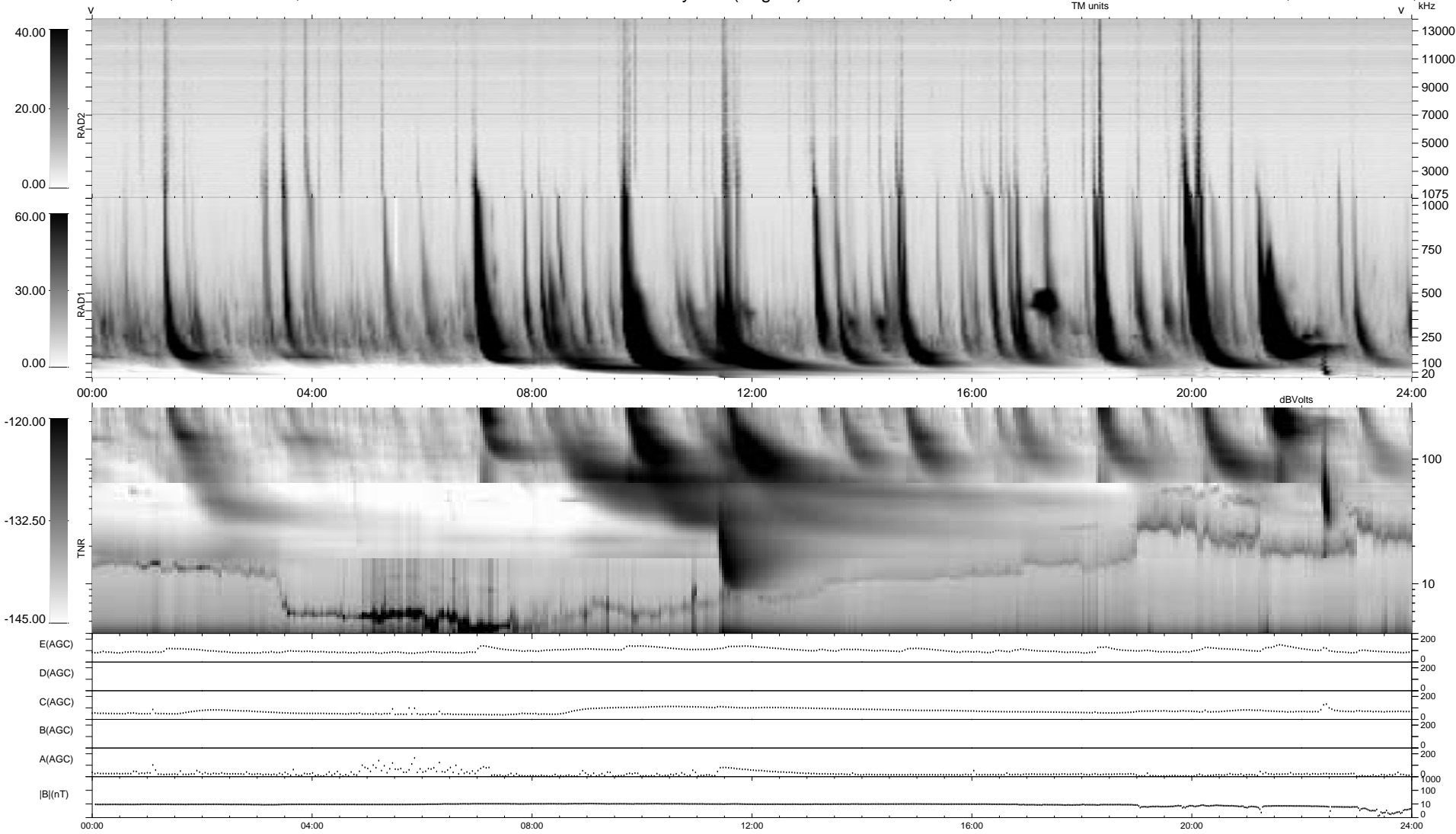


0 bad + 2 good MF/ZMF projected (100%) - 0 missing MFs
 Avg interval = 180 secs
 Re = -136.44 (129.55, 42.73, -2.63 GSE)

1.7d VMS-SunOS LZ version = v01
 DAILY Thu Sep 11, 2008
 Re = 131.15 (123.98, 42.66, -3.18 GSE)

WIND/WAVES Summary Plot (Page 1) for 29-MAR-2000, DOY = 89



RAD2
 Antenna Ey
 Mode LIN(1)
 SUM/SEP SEP
 Toggle OFF
 RAD1
 Antenna Ex
 Mode LIS(2,3)
 SUM/SEP SUM
 Toggle OFF
 TNR
 Antenna ExEy
 Mode A-32
 Sweep ACE