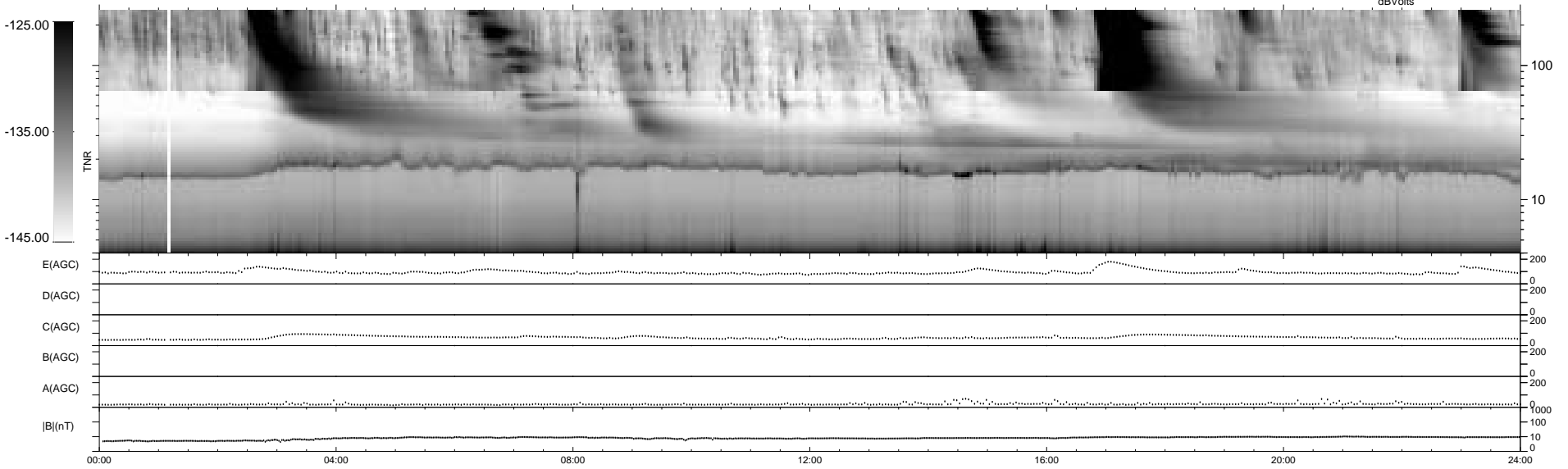
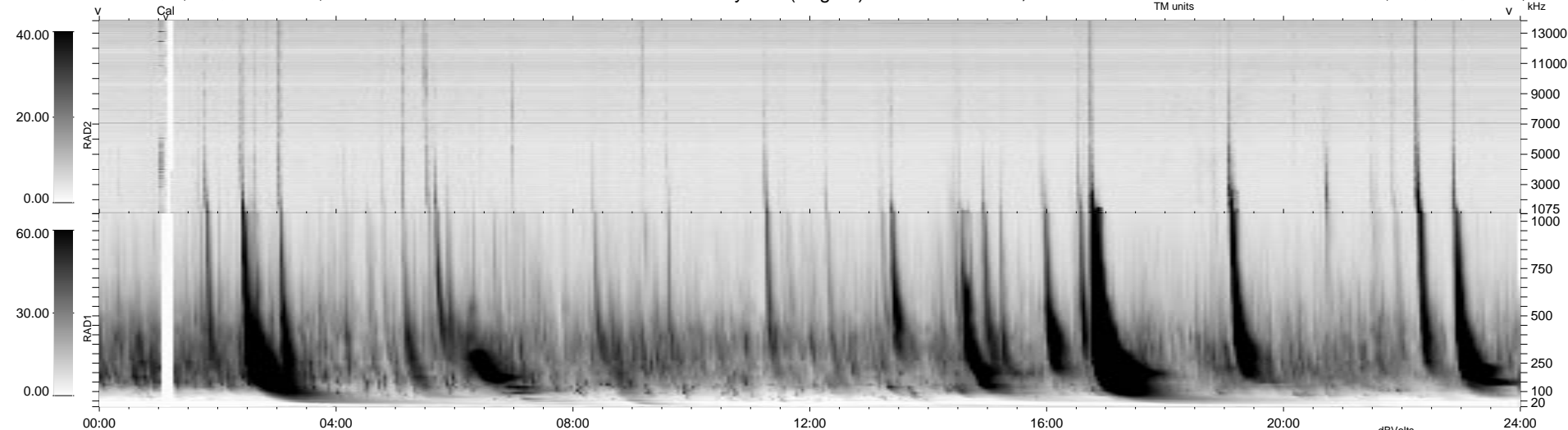


0 bad + 2 good MF/ZMF projected (100%) - 0 missing MFs
 Avg interval = 180 secs
 Re = - 141.33 (134.68, 42.82, -2.07 GSE)

1.7d VMS-SunOS LZ version = v01
 DAILY Thu Sep 11, 2008
 Re = 136.47 (129.59, 42.73, -2.63 GSE)

WIND/WAVES Summary Plot (Page 1) for 28-MAR-2000, DOY = 88



```

RAD2
Antenna Ey .....
Mode LIN(1) .....
SUM/SEP SEP .....
Toggle OFF .....

RAD1
Antenna Ex .....
Mode LIS(2,3) .....
SUM/SEP SUM .....
Toggle OFF .....

TNR
Antenna ExEy .....
Mode A-32 .....
Sweep ACE .....
  
```