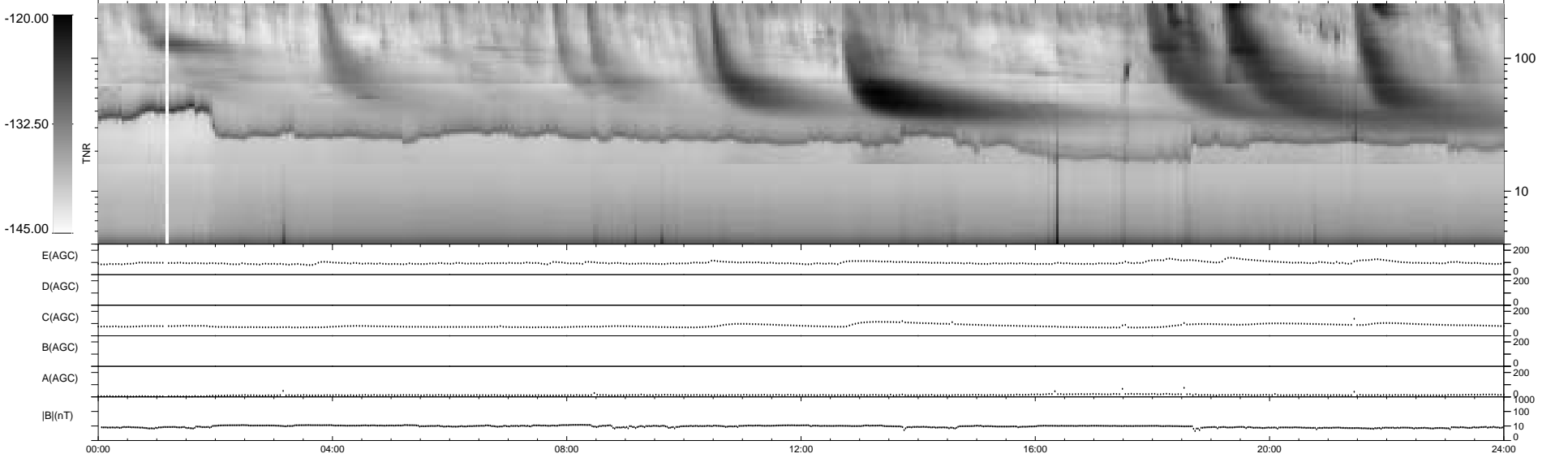
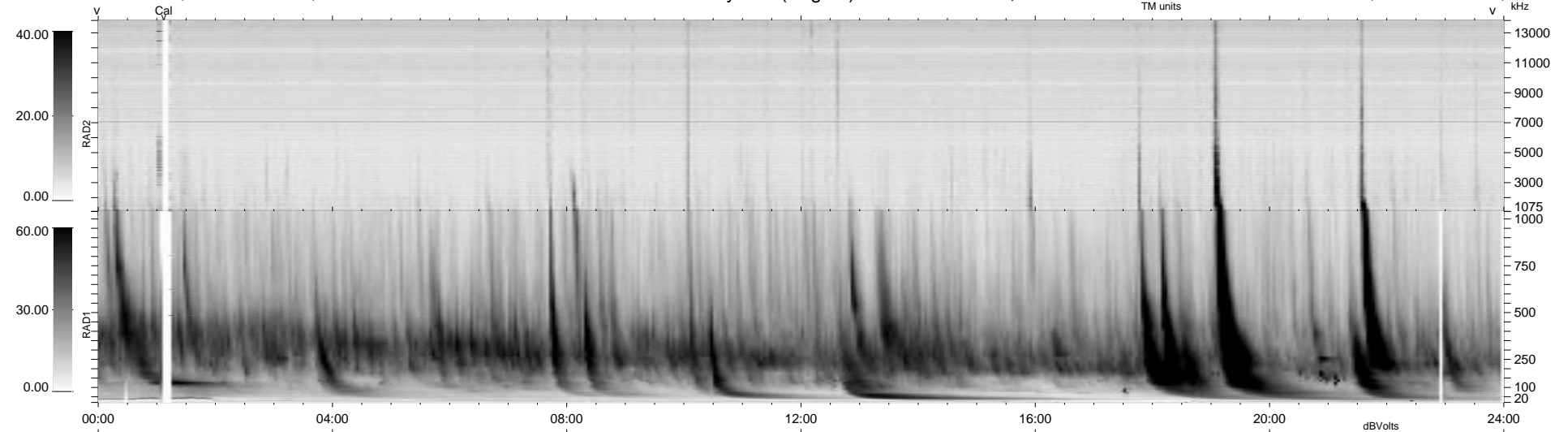


0 bad + 2 good MF/ZMF projected (100%) - 0 missing MFs
 Avg interval = 180 secs
 Re = 184.48 (179.58, 41.27, 9.07 GSE)

1.7d VMS-SunOS LZ version = v02
 DAILY Thu Sep 11, 2008
 Re = 184.64 (179.59, 42.01, 8.69 GSE)

WIND/WAVES Summary Plot (Page 1) for 06-MAR-2000, DOY = 66



```

RAD2
Antenna Ey .....
Mode LIN(1) .....
SUM/SEP SEP .....
Toggle OFF .....

RAD1
Antenna Ex .....
Mode LIS(2,3) .....
SUM/SEP SUM .....
Toggle OFF .....

TNR
Antenna ExEy .....
Mode A-32 .....
Sweep ACE .....
  
```