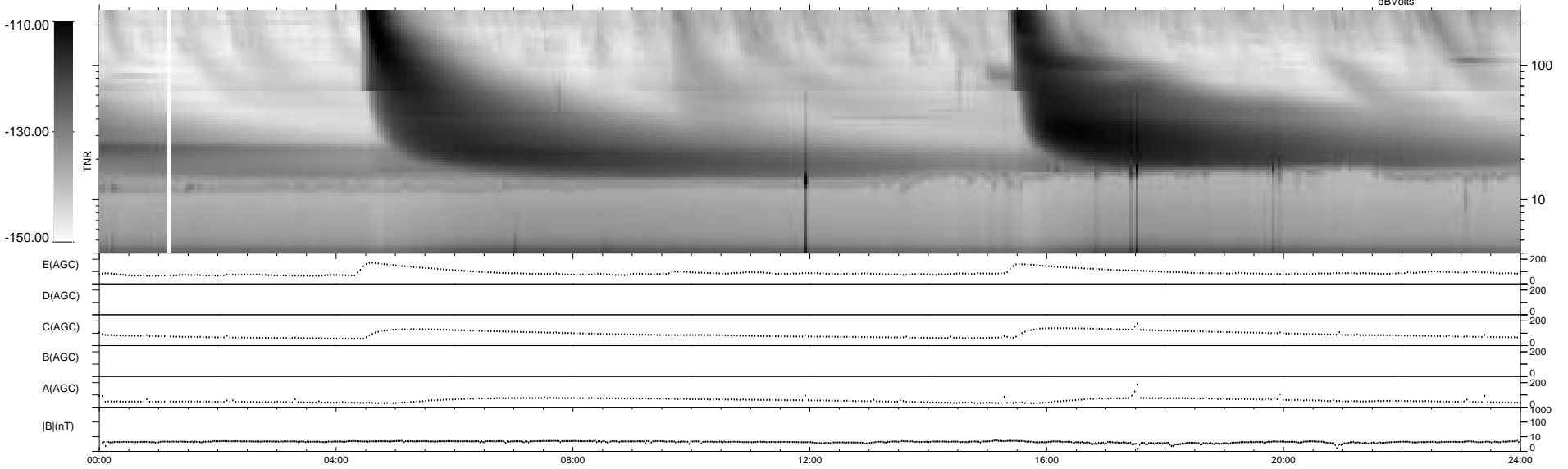
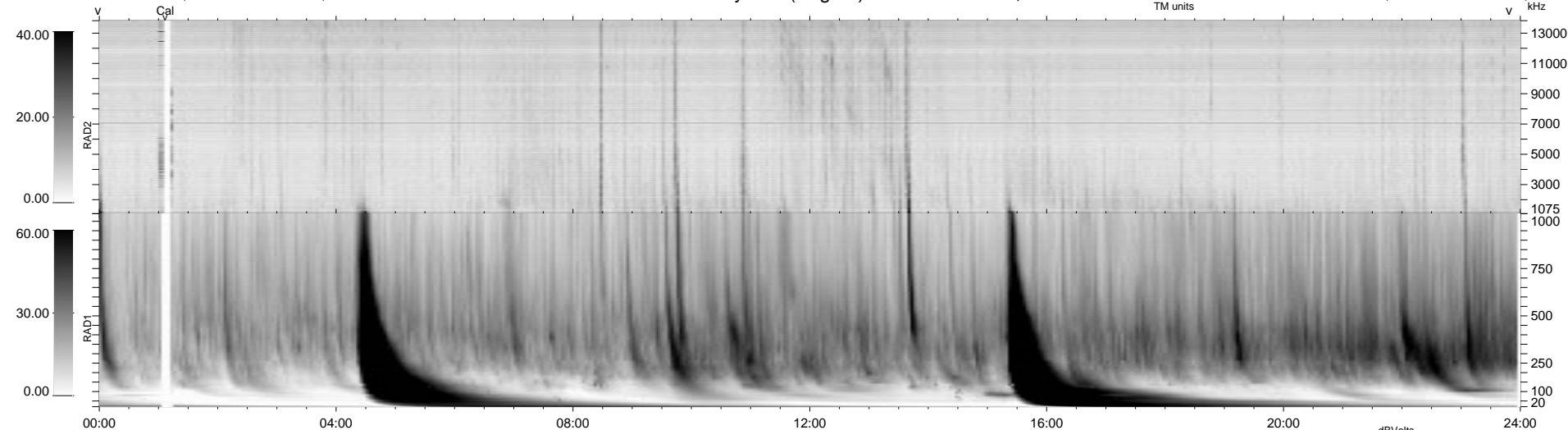


0 bad + 2 good MF/ZMF projected (100%) - 0 missing MFs
 Avg interval = 180 secs
 Re = 179.66 (175.85, 35.21, 10.75 GSE)

1.7d VMS-SunOS LZ version = v02
 DAILY Thu Sep 11, 2008
 Re = 180.90 (176.88, 36.40, 10.56 GSE)

WIND/WAVES Summary Plot (Page 1) for 29-FEB-2000, DOY = 60



```

RAD2
Antenna Ey .....
Mode LIN(1) .....
SUM/SEP SEP .....
Toggle OFF .....

RAD1
Antenna Ex .....
Mode LIS(2,3) .....
SUM/SEP SUM .....
Toggle OFF .....

TNR
Antenna ExEy .....
Mode A-32 .....
Sweep ACE .....
  
```