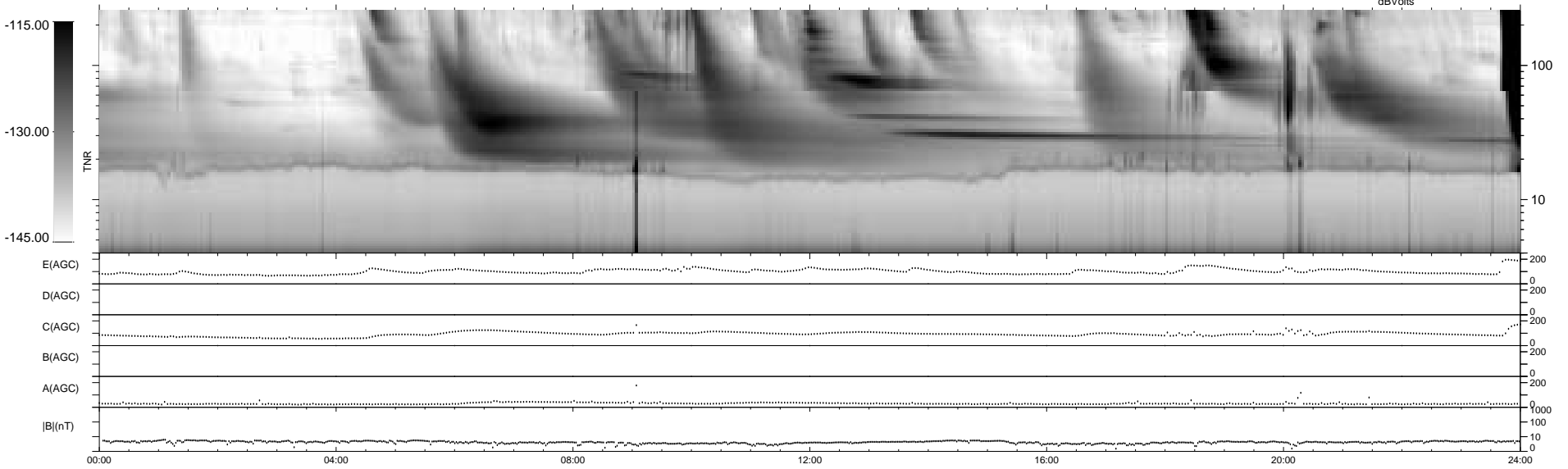
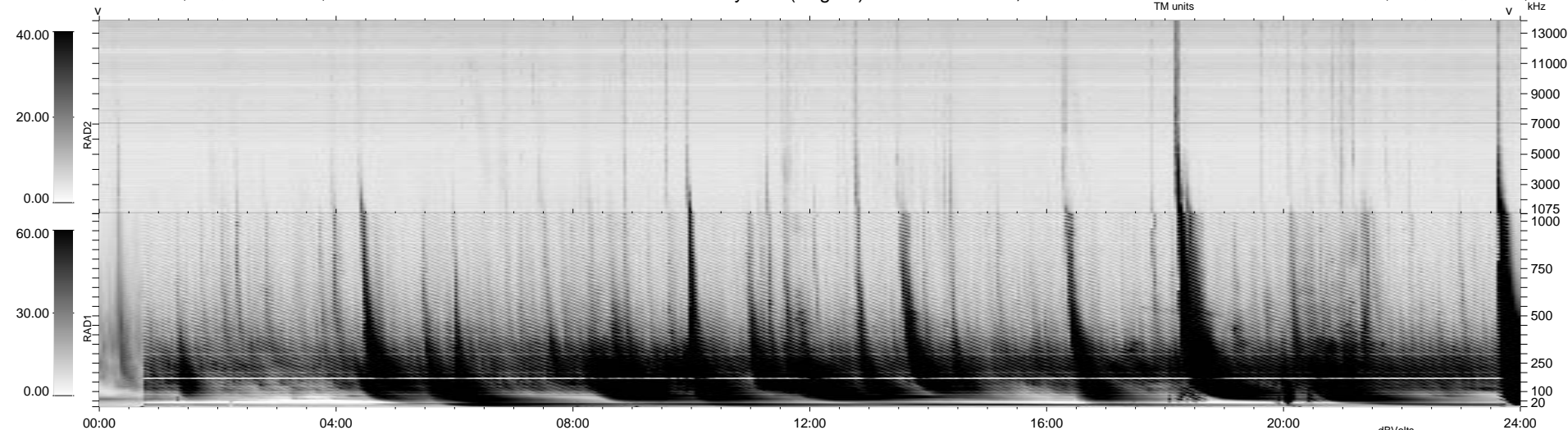


0 bad + 2 good MF/ZMF projected (100%) - 0 missing MFs  
 Avg interval = 180 secs  
 Re = 174.95 (171.80, 31.13, 11.17 GSE)

1.7d VMS-SunOS LZ version = v02  
 DAILY Thu Sep 11, 2008  
 Re = 176.67 (173.29, 32.56, 11.06 GSE)

### WIND/WAVES Summary Plot (Page 1) for 26-FEB-2000, DOY = 57



```

RAD2
Antenna Ey .....
Mode LIN(1) .....
SUM/SEP SEP .....
Toggle OFF .....

RAD1
Antenna Ex .....
Mode LIS(2,8) .....
SUM/SEP SUM .....
Toggle OFF .....

TNR
Antenna ExEy .....
Mode A-32 .....
Sweep ACE .....
  
```