

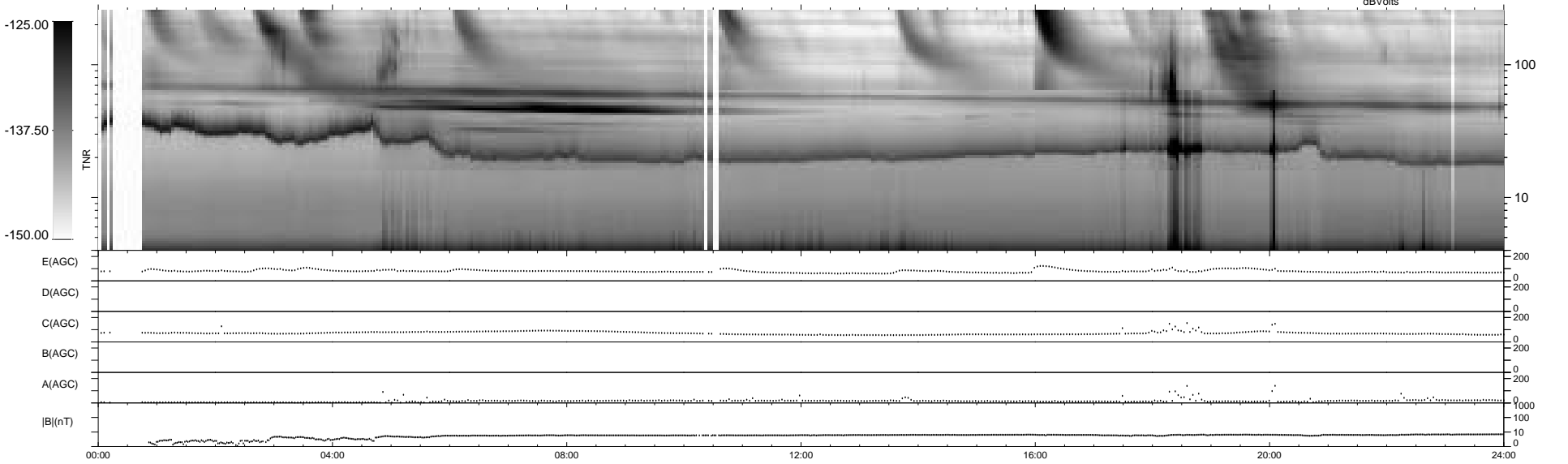
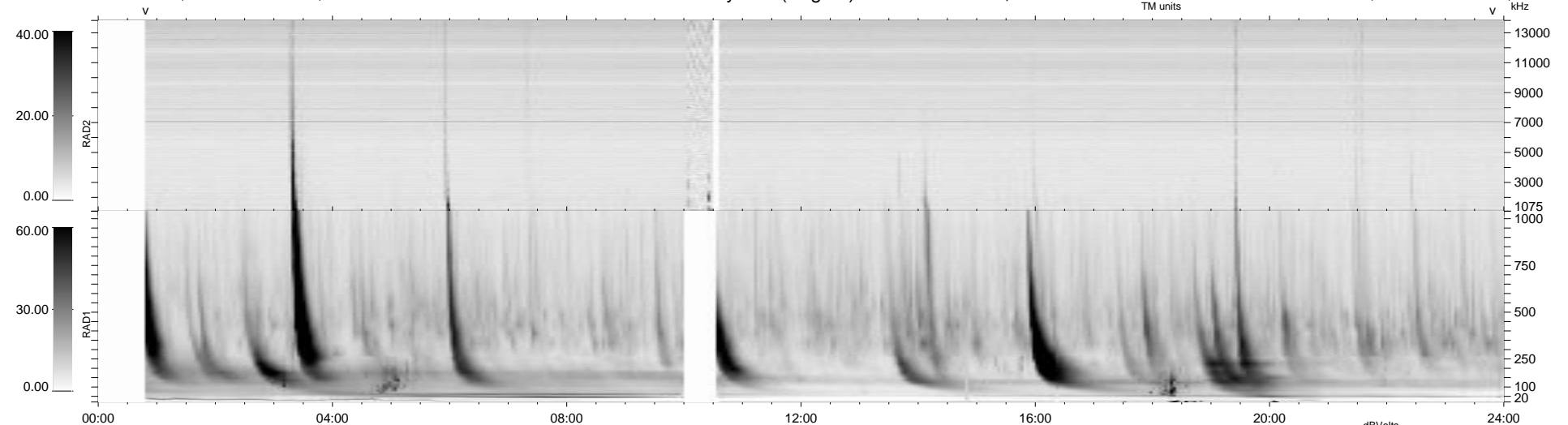
0 bad + 2 good MF/ZMF projected (100%) - 0 missing MFs
Avg interval = 180 secs
Re = - 148.71 (147.96, 10.67, 10.45 GSE)

1.7d VMS-SunOS

LZ version = v01

WIND/WAVES Summary Plot (Page 1) for 16-FEB-2000, DOY = 47

DAILY Thu Sep 11, 2008
Re = 152.02 (151.06, 13.27, 10.67 GSE)



RAD2 Antenna Mode SUM/SEP Toggle
RAD1 Antenna Mode SUM/SEP Toggle
TNR Antenna Mode Sweep