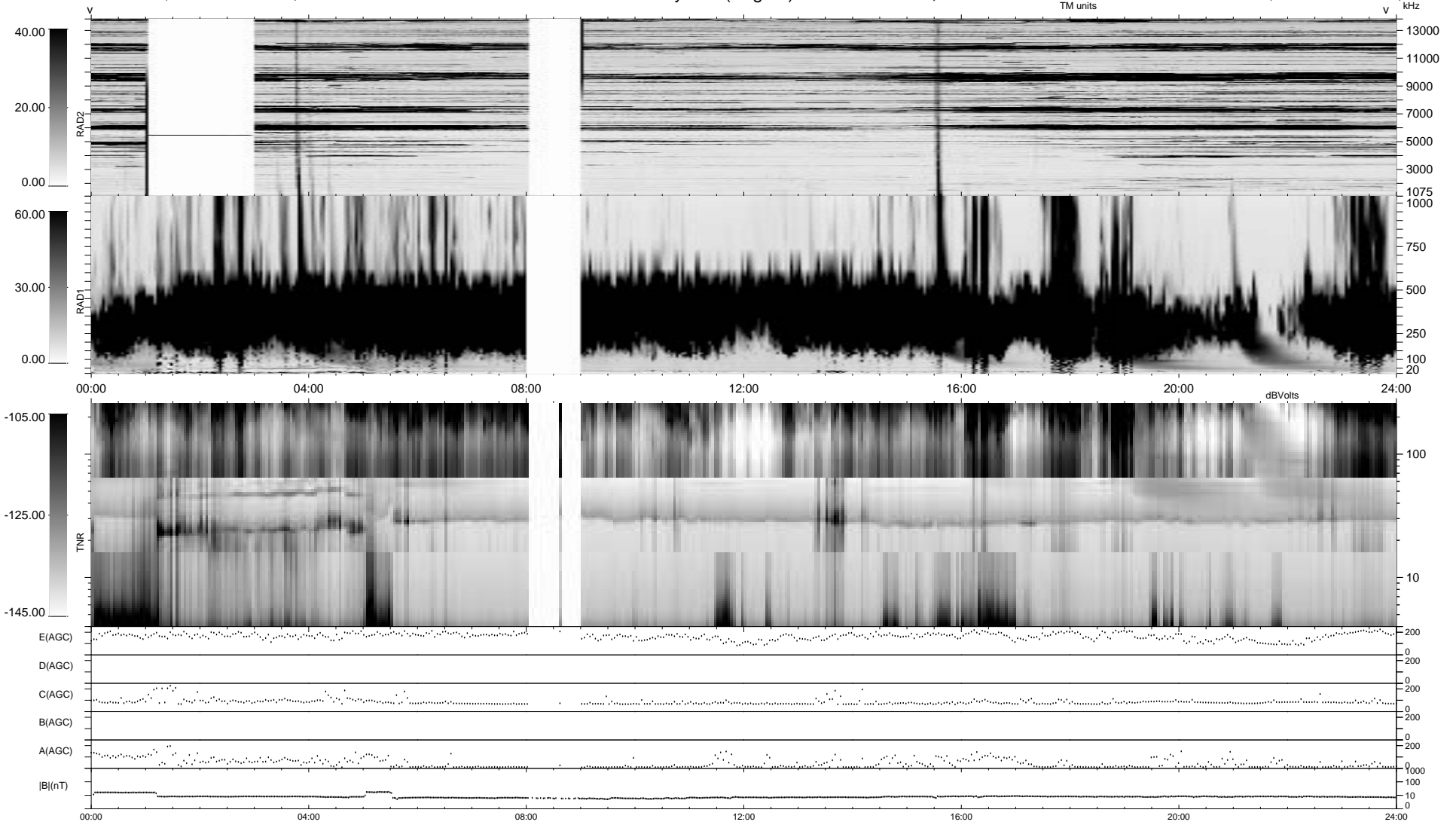


0 bad + 2 good MF/ZMF projected (100%) - 0 missing MFs
 Avg interval = 180 secs
 Re = 59.58 (-33.97, -25.60, 41.72 GSE)

1.7d VMS-SunOS LZ version = v01
 DAILY Thu Sep 11, 2008
 Re = 60.14 (-23.35, -32.72, 44.73 GSE)

WIND/WAVES Summary Plot (Page 1) for 25-JAN-2000, DOY = 25



```

RAD2
Antenna Ey
Mode LIN(1) .FIX(88) .LIN(1)
SUM/SEP SEP
Toggle OFF

RAD1
Antenna Ex
Mode LIS(2,3)
SUM/SEP SUM
Toggle OFF

TNR
Antenna ExEy
Mode A-32
Sweep ACE
  
```