

0 bad + 2 good MF/ZMF projected (100%) - 0 missing MFs  
 Avg interval = 180 secs  
 Re = 74.07 (-68.24, -27.82, 7.50 GSE)

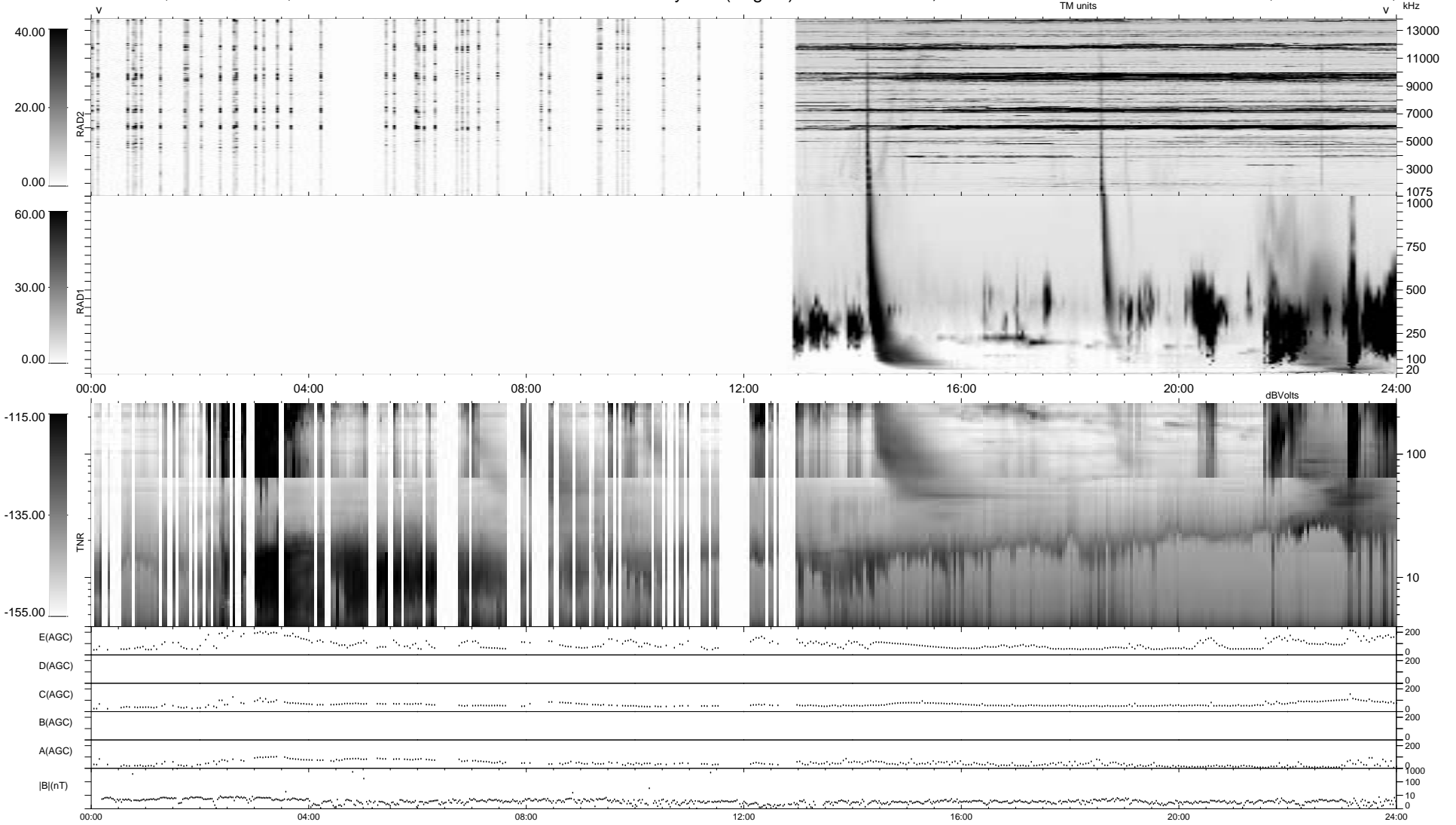
1.7d VMS-SunOS

LZ version = v02

WIND/WAVES Summary Plot (Page 1) for 09-JAN-2000, DOY = 9

DAILY Thu Sep 11, 2008

Re = 72.75 (-65.04, -31.19, 9.48 GSE)



RAD2  
 Antenna Ey  
 Mode LIN(1)  
 SUM/SEP SEP  
 Toggle OFF

RAD1  
 Antenna  
 Mode  
 SUM/SEP  
 Toggle

TNR  
 Antenna  
 Mode  
 Sweep