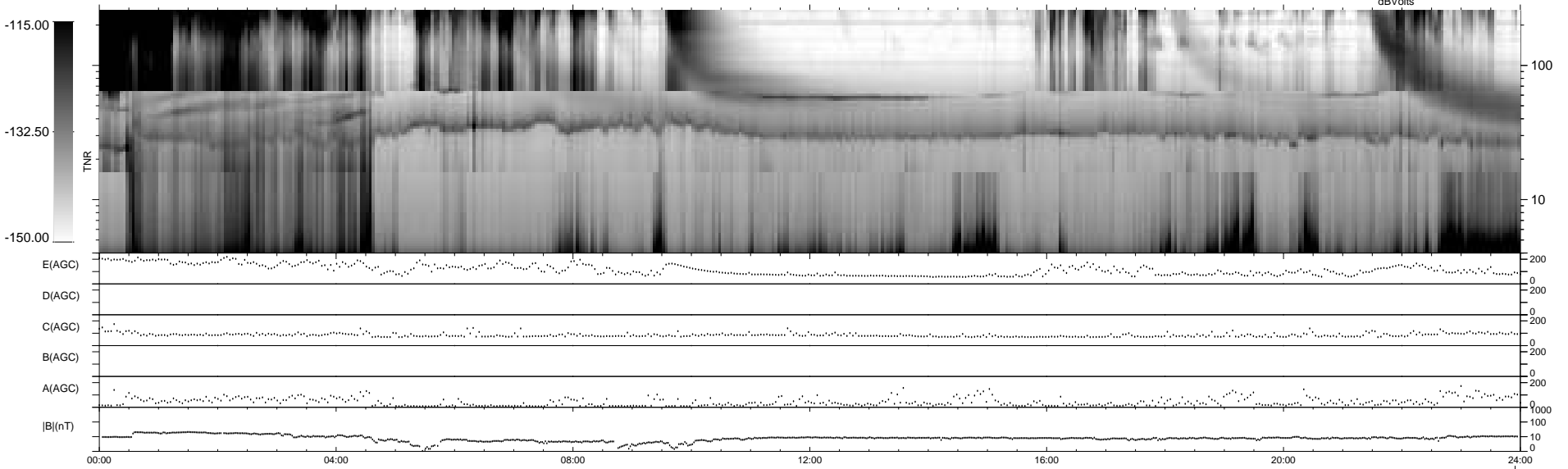
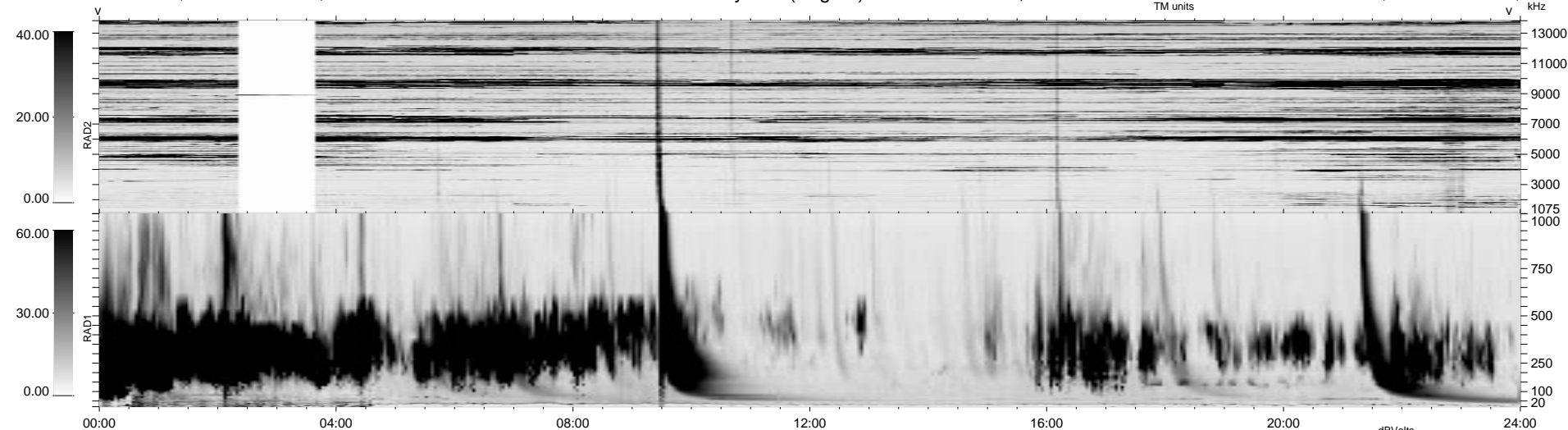


9 bad + 929 good MF/939MF projected (98%) - 1 missing MF
 Avg interval = 180 secs
 Re = 45.87 (-17.26, -40.53, 12.79 GSE)

1.7d VMS-SunOS LZ version = v01

WIND/WAVES Summary Plot (Page 1) for 29-DEC-1999, DOY = 363

DAILY Tue Sep 16, 2008
 Re = 32.91 (-3.52, -30.79, 11.08 GSE)



RAD2
 Antenna Ey
 Mode LIN(1) ,FIX(157) ,LIN(d)
 SUM/SEP SEP
 Toggle OFF
 RAD1
 Antenna Ex
 Mode LIS(2,3)
 SUM/SEP SUM
 Toggle OFF
 TNR
 Antenna ExEy
 Mode A-32
 Sweep ACE