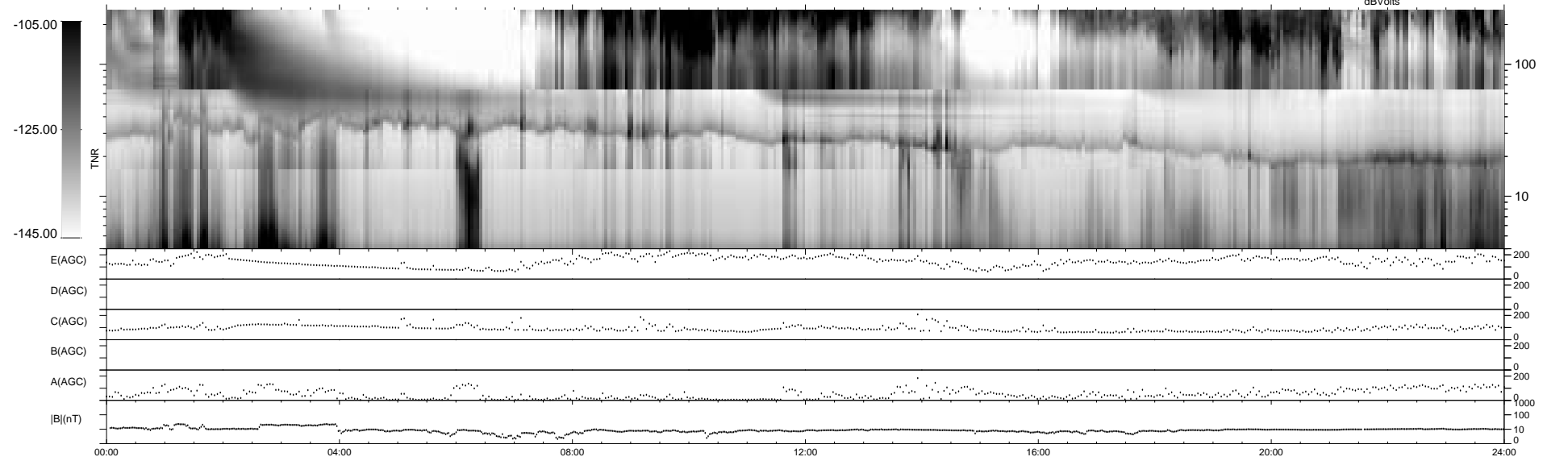
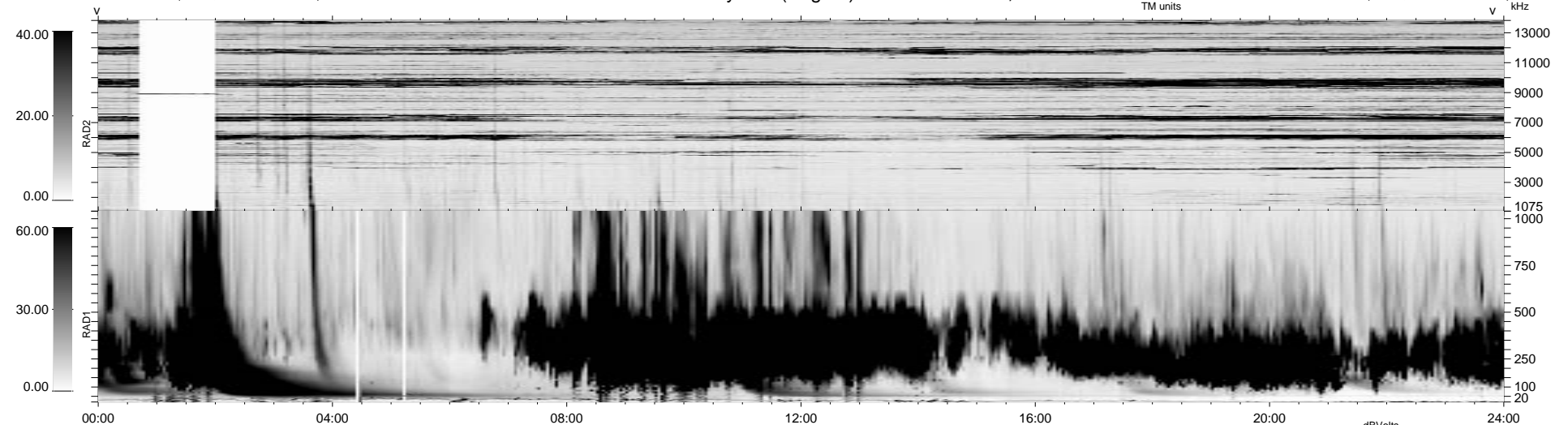


6 bad + 933 good MF/939MF projected (99%) - 0 missing MFs
 Avg interval = 180 secs
 Re = 62.87 (-37.88, -48.82, 11.60 GSE)

1.7d VMS-SunOS LZ version = v01
 DAILY Tue Sep 16, 2008
 Re = 55.73 (-28.81, -45.95, 12.79 GSE)

WIND/WAVES Summary Plot (Page 1) for 27-DEC-1999, DOY = 361



```

RAD2
Antenna Ey ..... LIN(1) ..... FIX(157) ..... LIN(1) .....
Mode LIN(1) .....
SUM/SEP SEP .....
Toggle OFF .....

RAD1
Antenna Ex .....
Mode LIS(2,3) .....
SUM/SEP SUM .....
Toggle OFF .....

TNR
Antenna ExEy .....
Mode A-32 .....
Sweep ACE .....
  
```