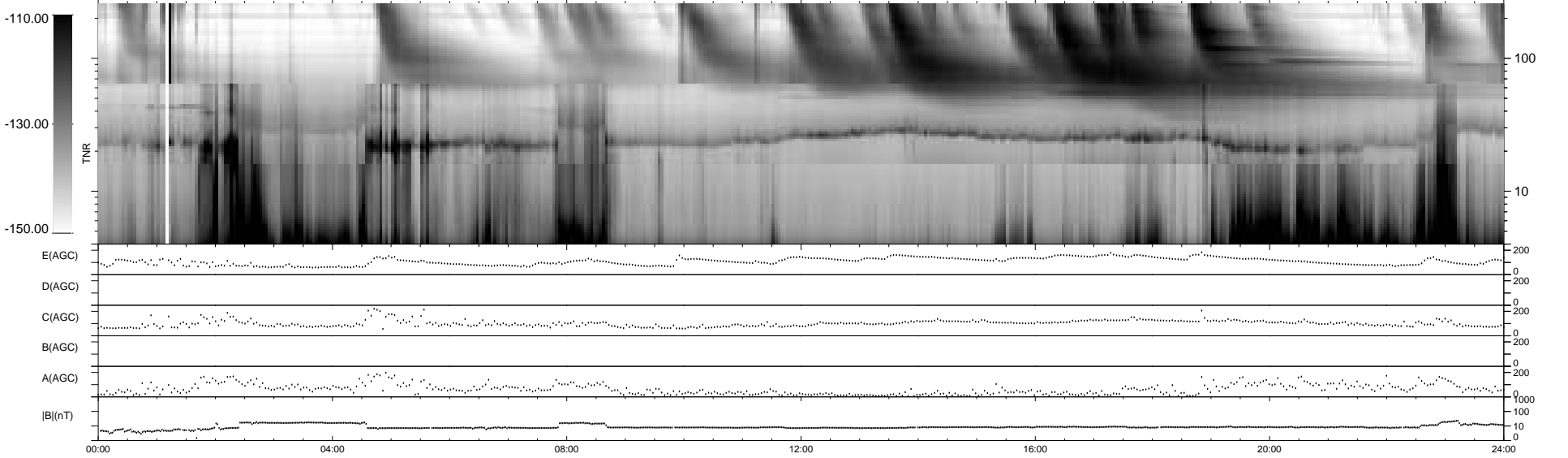
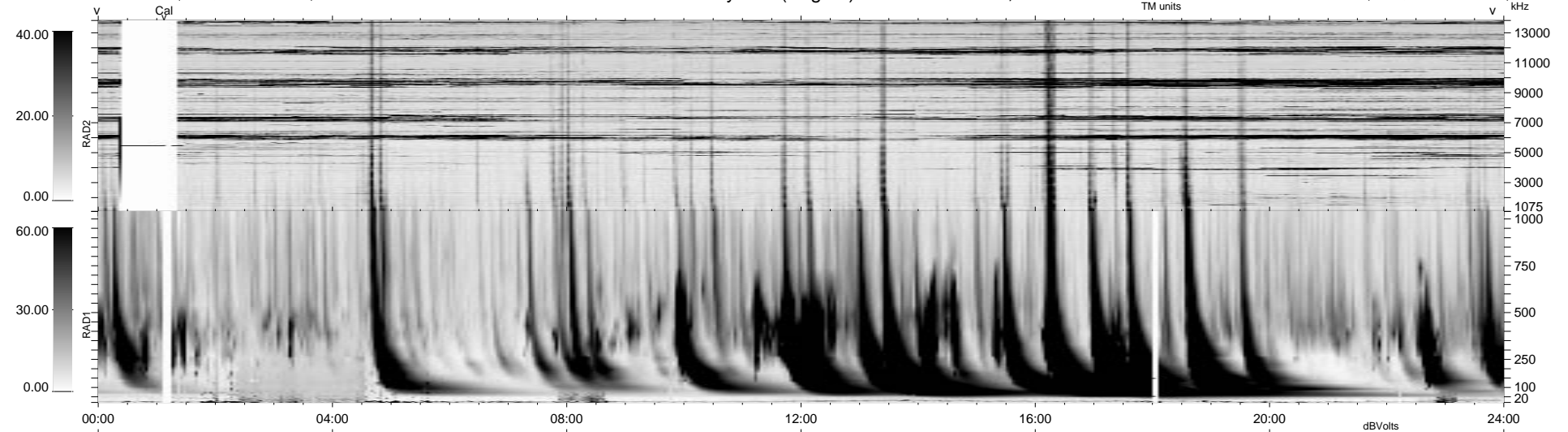


7 bad + 933 good MF/940MF projected (99%) - 0 missing MFs
 Avg interval = 180 secs
 Re = - 67.41 (-44.63, -49.69, 9.10 GSE)

1.7d VMS-SunOS LZ version = v01
 DAILY Tue Sep 16, 2008
 Re = 62.91 (-37.94, -48.83, 11.58 GSE)

WIND/WAVES Summary Plot (Page 1) for 26-DEC-1999, DOY = 360



RAD2
 Antenna Ey
 Mode LIN(1) . . . FX(88) . . . LIN(1)
 SUM/SEP SEP
 Toggle OFF
 RAD1
 Antenna Ex
 Mode LIS(2,3)
 SUM/SEP SUM
 Toggle OFF
 TNR
 Antenna ExEy
 Mode A-32
 Sweep ACE