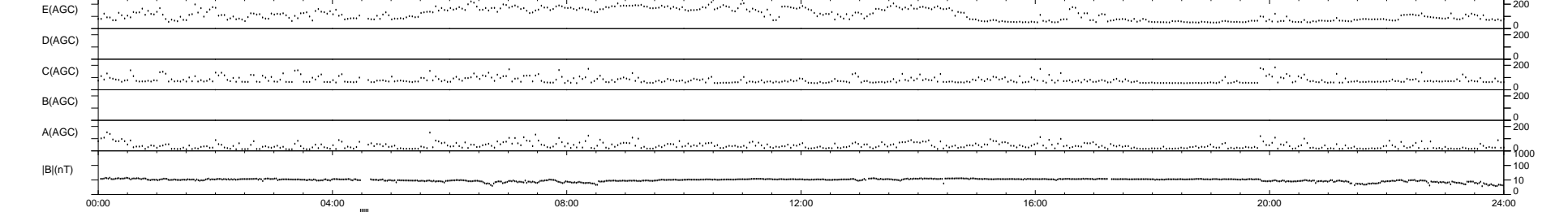
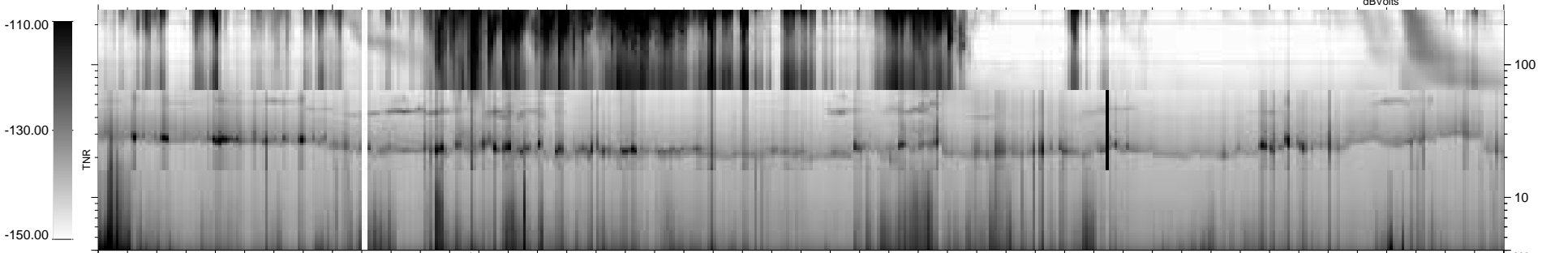
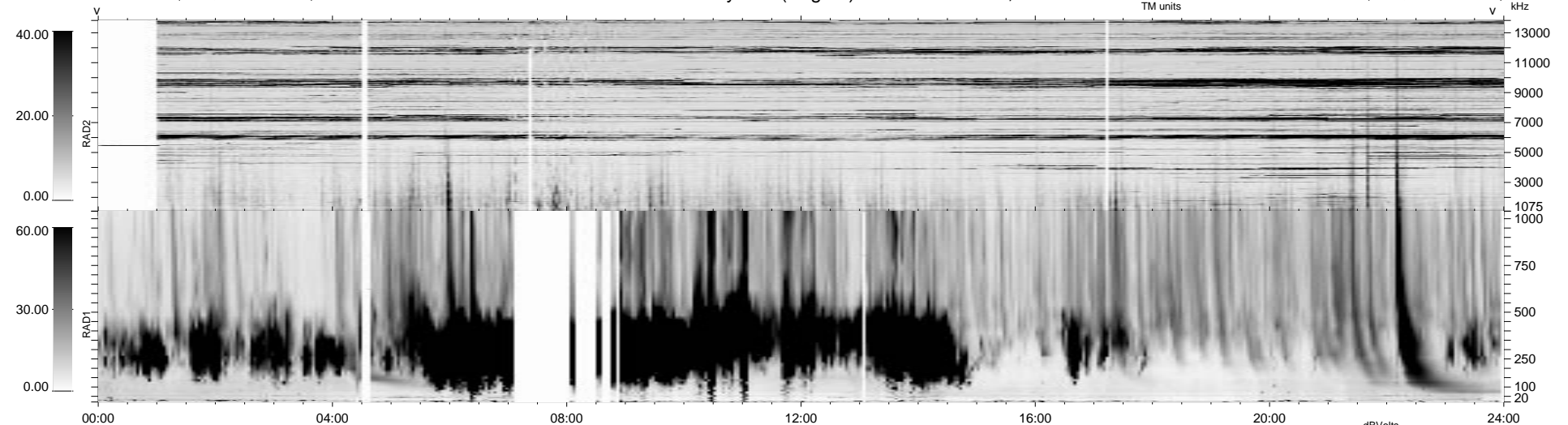


88 bad + 845 good MF/939MF projected (89%) - 6 missing MFs  
 Avg interval = 180 secs  
 Re = - 69.32 (-49.38, -48.32, 5.66 GSE)

1.7d VMS-SunOS LZ version = v01

WIND/WAVES Summary Plot (Page 1) for 25-DEC-1999, DOY = 359

DAILY Tue Sep 16, 2008  
 Re = 67.43 (-44.67, -49.69, 9.08 GSE)



```

RAD2
Antenna Ey
Mode FIX(88)
SUM/SEP SEP
Toggle OFF

RAD1
Antenna Ex
Mode LIS(2.8)
SUM/SEP SUM
Toggle OFF

TNR
Antenna ExEy
Mode A-32
Sweep ACE
  
```