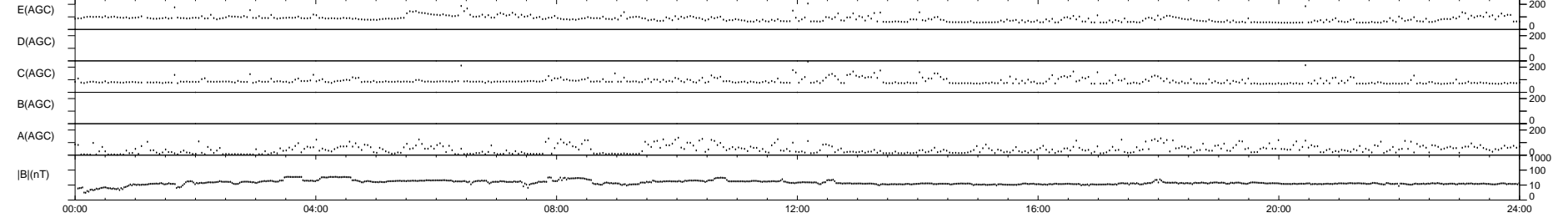
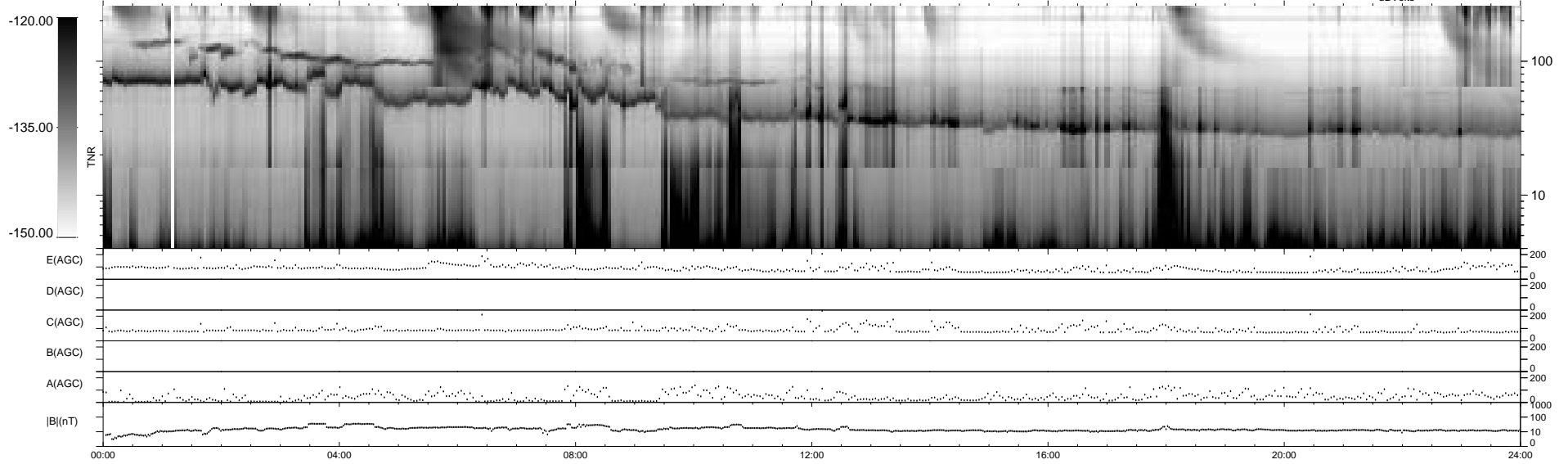
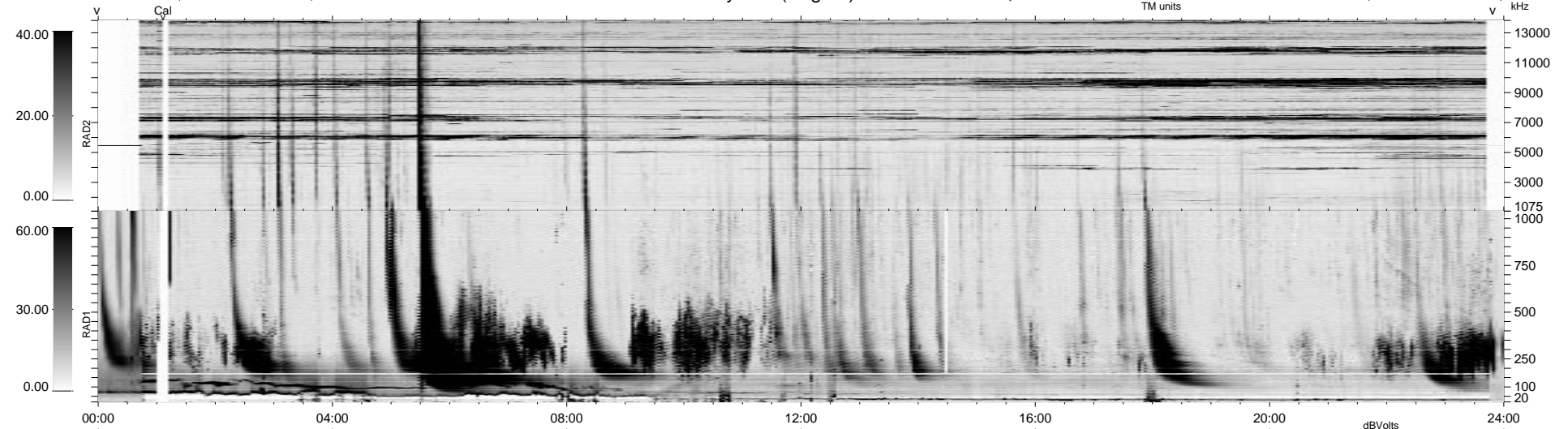


21 bad + 918 good MF/939MF projected (97%) - 0 missing MFs
 Avg interval = 180 secs
 Re = 69.16 (-52.48, -45.01, 1.89 GSE)

1.7d VMS-SunOS LZ version = v01
 DAILY Tue Sep 16, 2008
 Re = 69.33 (-49.41, -48.30, 5.64 GSE)

WIND/WAVES Summary Plot (Page 1) for 24-DEC-1999, DOY = 358



```

RAD2
Antenna Ey ..... LIN(1) ..... FIX(88)
Mode FIX(88) .....
SUM/SEP SEP .....
Toggle OFF .....

RAD1
Antenna Ex ..... LIS(2,8) ..... SUM
Mode LIS(2,8) ..... SEP .....
SUM/SEP SUM .....
Toggle OFF .....

TNR
Antenna ExEy .....
Mode A-32 .....
Sweep ACE .....
  
```