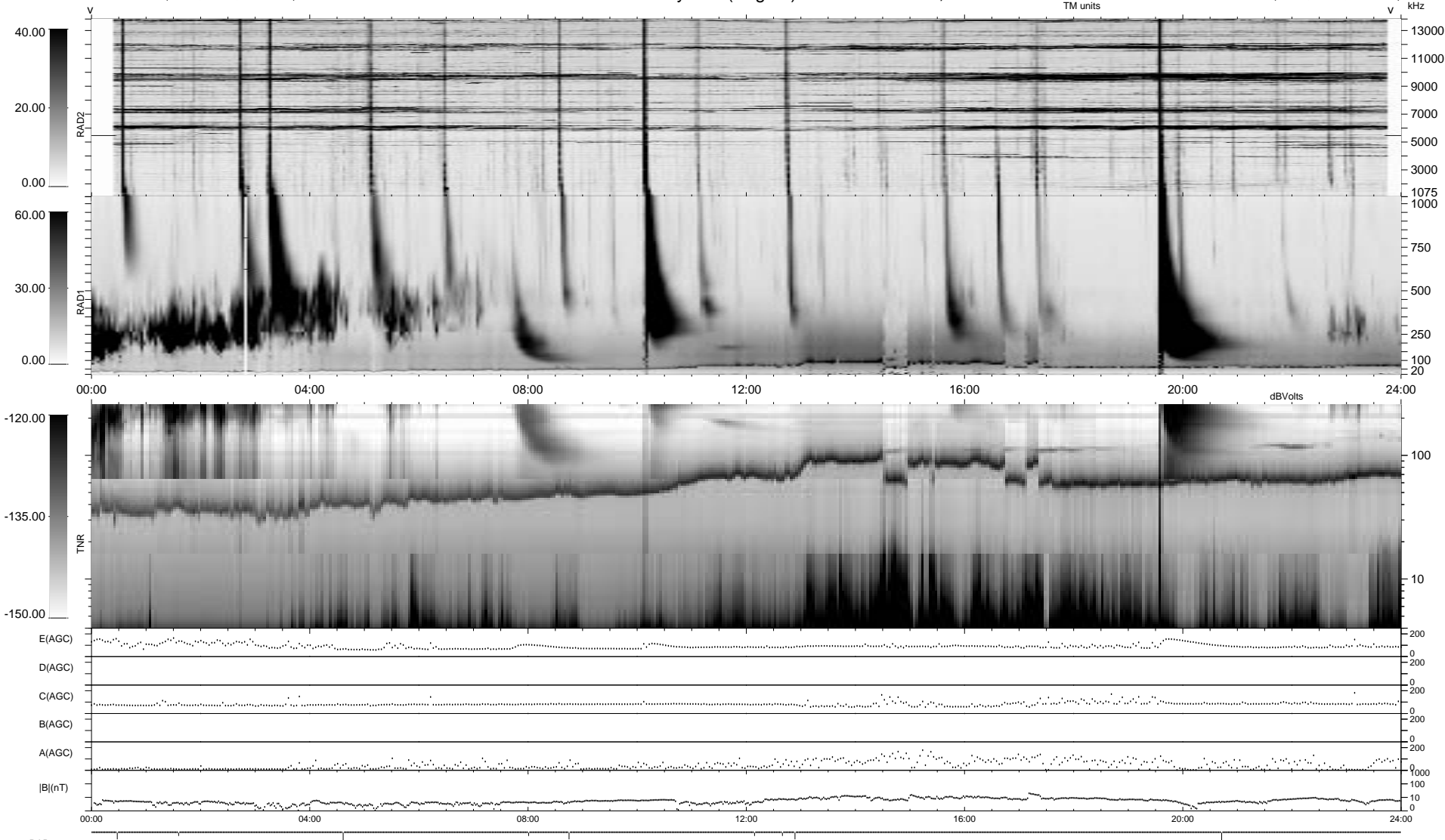


9 bad + 930 good MF/939MF projected (99%) - 0 missing MFs
 Avg interval = 180 secs
 Re = 67.17 (-53.91, -40.01, -1.98 GSE)

1.7d VMS-SunOS LZ version = v01

WIND/WAVES Summary Plot (Page 1) for 23-DEC-1999, DOY = 357

DAILY Tue Sep 16, 2008
 Re = 69.16 (-52.50, -44.98, 1.86 GSE)



```

RAD2
Antenna Ey .....
Mode FIX(88) ..... LIN(1) ..... FIX(88)
SUM/SEP SEP .....
Toggle OFF .....

RAD1
Antenna Ex .....
Mode LIS(2,3) .....
SUM/SEP SUM .....
Toggle OFF .....

TNR
Antenna ExEy .....
Mode A-32 .....
Sweep ACE .....
  
```