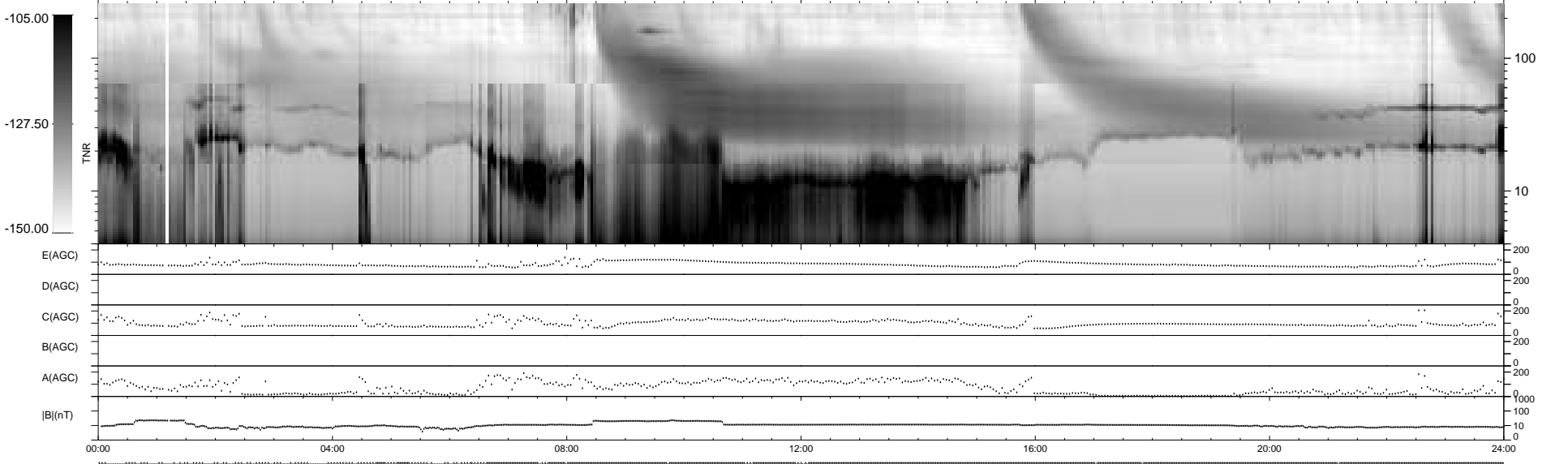
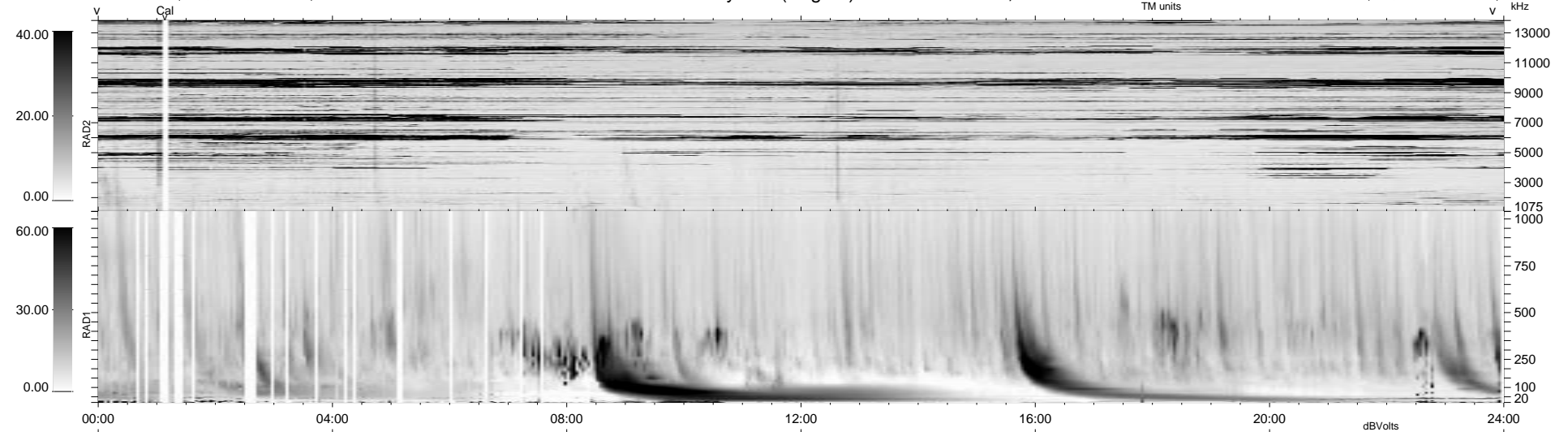


179 bad + 760 good MF/939MF projected (80%) - 0 missing MFs
 Avg interval = 180 secs
 Re = 49.90 (-1.58, -46.48, 18.10 GSE)

1.7d VMS-SunOS LZ version = v01
 DAILY Tue Sep 16, 2008
 Re = 39.39 (7.16, -34.52, 17.57 GSE)

WIND/WAVES Summary Plot (Page 1) for 14-DEC-1999, DOY = 348



```

RAD2
Antenna Ey .....
Mode LIN(1) .....
SUM/SEP SEP .....
Toggle OFF .....

RAD1
Antenna Ex .....
Mode LIS(2,3) .....
SUM/SEP SUM .....
Toggle OFF .....

TNR
Antenna ExEy .....
Mode A-32 .....
Sweep ACE .....
  
```