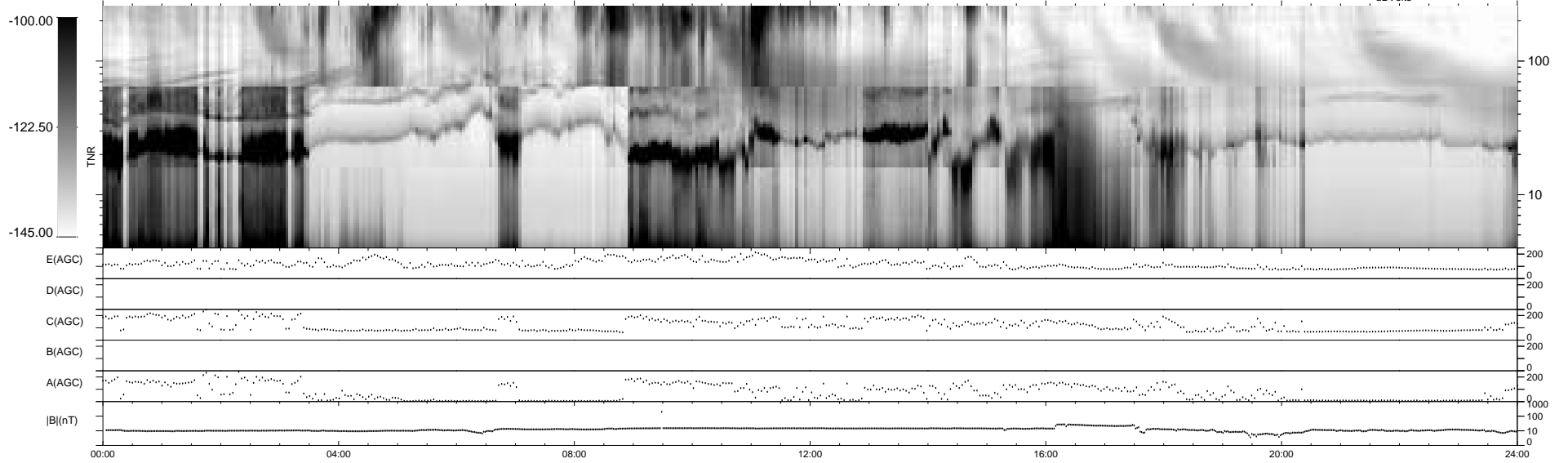
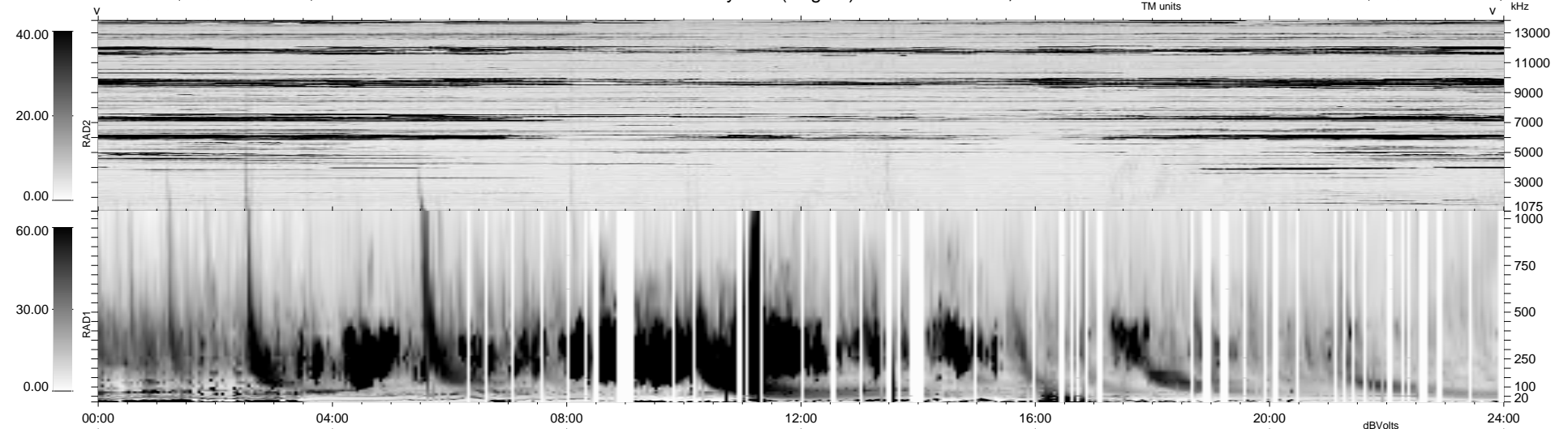


595 bad + 344 good MF/939MF projected (36%) - 0 missing MFs  
 Avg interval = 180 secs  
 Re = 57.90 (-9.97, -54.48, 16.88 GSE)

1.7d VMS-SunOS LZ version = v02

### WIND/WAVES Summary Plot (Page 1) for 13-DEC-1999, DOY = 347

DAILY Tue Sep 16, 2008  
 Re = 49.96 (-1.64, -46.54, 18.09 GSE)



RAD2  
 Antenna Ey  
 Mode LIN(1)  
 SUM/SEP SEP  
 Toggle OFF

RAD1  
 Antenna Ex  
 Mode LIS(2,3)  
 SUM/SEP SUM  
 Toggle OFF

TNR  
 Antenna ExEy  
 Mode A-32  
 Sweep ACE