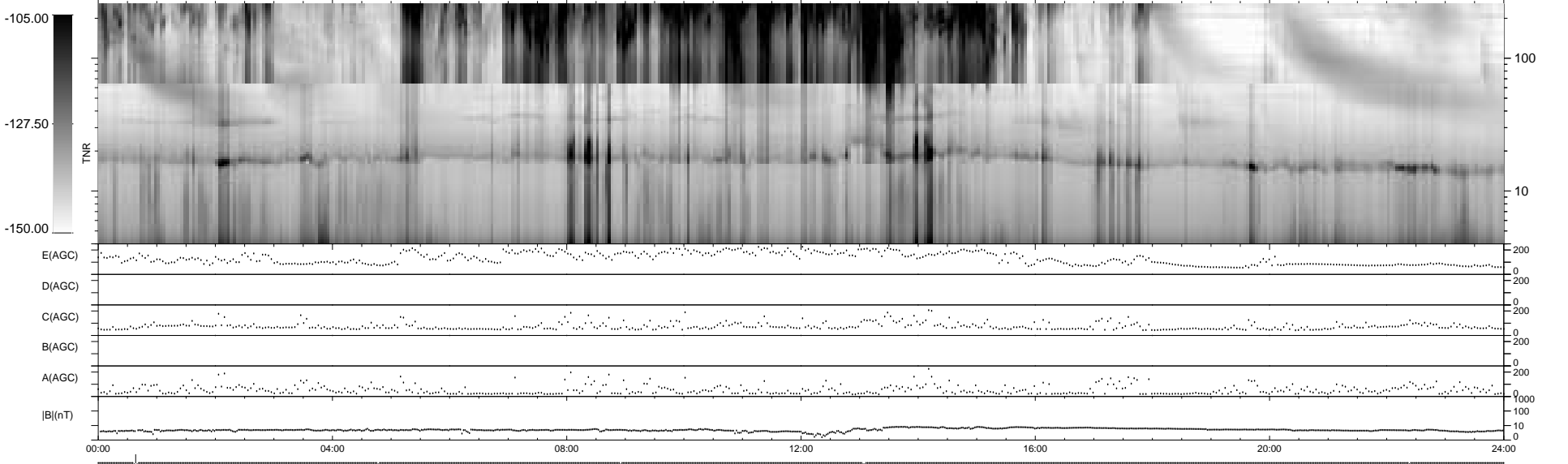
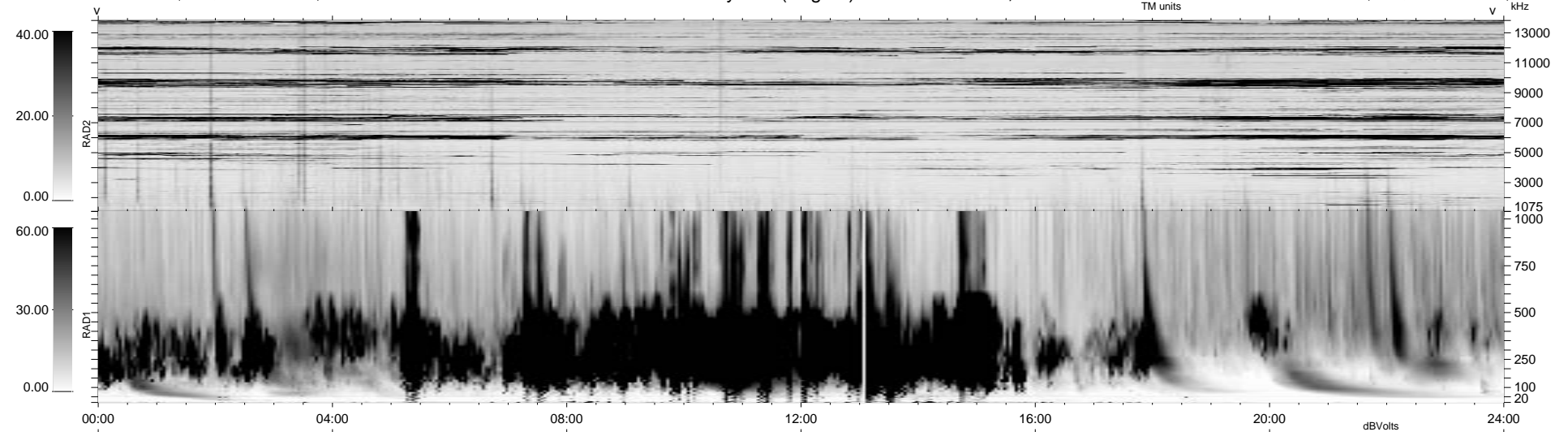


7 bad + 932 good MF/940MF projected (99%) - 1 missing MF
 Avg interval = 180 secs
 Re = - 67.81 (-24.33, -62.20, 11.73 GSE)

1.7d VMS-SunOS LZ version = v01
 DAILY Tue Sep 16, 2008
 Re = 63.81 (-17.64, -59.56, 14.62 GSE)

WIND/WAVES Summary Plot (Page 1) for 11-DEC-1999, DOY = 345



E(AGC) 0 200
 D(AGC) 0 200
 C(AGC) 0 200
 B(AGC) 0 200
 A(AGC) 0 200
 |B|(nT) 0 1000
 0 100
 0 10

00:00 04:00 08:00 12:00 16:00 20:00 24:00

RAD2
 Antenna Ey
 Mode LIN(1)
 SUM/SEP SEP
 Toggle OFF

RAD1
 Antenna Ex
 Mode LIS(2,3)
 SUM/SEP SUM
 Toggle OFF

TNR
 Antenna ExEy
 Mode A-32
 Sweep ACE